

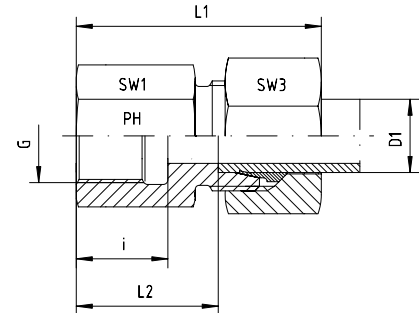
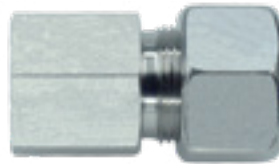
Female stud coupling to BSP parallel

BOOK INDEX

SECTION INDEX

to ISO 8434-1 / DIN 2353

L and S series



Series	Pressure PN	Tube O.D. D1	Thread G	Approx. Dimensions					Part code
				L1	L2	i	SW1	SW3	
L	315	6	G 1/8"	36.0	19.0	12.0	14	14	GAI-L-06-G 1/8"
L	315	6	G 1/4"	41.0	24.0	17.0	19	14	GAI-L-06-G 1/4"
L	315	6	G 3/8"	42.0	24.0	17.0	24	14	GAI-L-06-G 3/8"
L	315	6	G 1/2"	46.0	31.0	20.0	27	14	GAI-L-06-G 1/2"
L	315	8	G 1/8"	36.0	19.0	12.0	14	17	GAI-L-08-G 1/8"
L	315	8	G 1/4"	41.0	24.0	17.0	19	17	GAI-L-08-G 1/4"
L	315	8	G 3/8"	42.0	25.0	17.0	24	17	GAI-L-08-G 3/8"
L	315	8	G 1/2"	46.0	32.0	20.0	27	17	GAI-L-08-G 1/2"
L	315	10	G 1/8"	36.0	19.0	12.0	17	19	GAI-L-10-G 1/8"
L	315	10	G 1/4"	42.0	25.0	17.0	19	19	GAI-L-10-G 1/4"
L	315	10	G 3/8"	43.0	26.0	17.0	24	19	GAI-L-10-G 3/8"
L	315	10	G 1/2"	47.0	30.0	20.0	27	19	GAI-L-10-G 1/2"
L	315	12	G 1/4"	42.0	25.0	17.0	19	22	GAI-L-12-G 1/4"
L	315	12	G 3/8"	43.0	26.0	17.0	24	22	GAI-L-12-G 3/8"
L	315	12	G 1/2"	48.0	30.0	20.0	27	22	GAI-L-12-G 1/2"
L	315	15	G 3/8"	46.0	27.0	17.5	24	27	GAI-L-15-G 3/8"
L	315	15	G 1/2"	49.0	31.0	20.0	27	27	GAI-L-15-G 1/2"
L	160	15	G 3/4"	53.0	34.0	22.0	32	27	GAI-L-15-G 3/4"
L	315	18	G 3/8"	47.0	26.5	17.5	27	32	GAI-L-18-G 3/8"
L	315	18	G 1/2"	50.5	30.5	20.0	27	32	GAI-L-18-G 1/2"
L	160	18	G 3/4"	53.5	33.5	22.0	36	32	GAI-L-18-G 3/4"
L	160	22	G 1/2"	55.0	33.5	20.0	32	36	GAI-L-22-G 1/2"
L	160	22	G 3/4"	56.0	35.5	22.0	36	36	GAI-L-22-G 3/4"
L	160	28	G 3/4"	57.5	35.0	22.0	41	41	GAI-L-28-G 3/4"
L	160	28	G 1"	60.5	38.0	24.5	41	41	GAI-L-28-G 1"
L	160	35	G 1 1/4"	68.5	41.0	26.5	55	50	GAI-L-35-G 1 1/4"
L	160	42	G 1 1/2"	69.5	42.5	28.5	60	60	GAI-L-42-G 1 1/2"

Series	Pressure PN	Tube O.D. D1	Thread G	Approx. Dimensions					Part code
				L1	L2	i	SW1	SW3	
S	630	6	G 1/4"	42.0	26.0	17.0	19	17	GAI-S-06-G 1/4"
S	630	6	G 3/8"			17.0	24	17	GAI-S-06-G 3/8"
S	630	6	G 1/2"	48.0	31.0	20.0	27	17	GAI-S-06-G 1/2"
S	630	8	G 1/4"	43.0	26.0	17.0	19	19	GAI-S-08-G 1/4"
S	630	8	G 3/8"	44.0	27.0	17.0	24	19	GAI-S-08-G 3/8"
S	630	8	G 1/2"	48.0	31.0	20.0	27	19	GAI-S-08-G 1/2"
S	630	10	G 3/8"	45.0	26.5	17.0	24	22	GAI-S-10-G 3/8"
S	630	10	G 1/2"	49.5	30.5	20.0	27	22	GAI-S-10-G 1/2"
S	630	12	G 1/4"	46.0	27.5	17.0	22	24	GAI-S-12-G 1/4"
S	630	12	G 3/8"	45.0	26.5	17.0	24	24	GAI-S-12-G 3/8"
S	630	12	G 1/2"	50.0	30.5	20.0	27	24	GAI-S-12-G 1/2"
S	630	14	G 3/8"	50.0	30.0	17.0	24	27	GAI-S-14-G 3/8"
S	630	14	G 1/2"	52.0	32.0	20.0	27	27	GAI-S-14-G 1/2"
S	400	16	G 3/8"	48.0	26.5	17.5	27	30	GAI-S-16-G 3/8"
S	400	16	G 1/2"	53.0	31.5	20.0	27	30	GAI-S-16-G 1/2"
S	400	16	G 3/4"	55.0	34.5	22.0	36	30	GAI-S-16-G 3/4"
S	400	20	G 1/2"	57.0	32.5	20.0	32	36	GAI-S-20-G 1/2"
S	400	20	G 3/4"	60.0	34.5	22.0	32	36	GAI-S-20-G 3/4"
S	400	25	G 3/4"	60.0	35.0	22.0	41	46	GAI-S-25-G 3/4"
S	400	25	G 1"	66.5	37.5	24.5	41	46	GAI-S-25-G 1"
S	400	30	G 1 1/4"	72.5	42.0	26.5	55	50	GAI-S-30-G 1 1/4"
S	315	38	G 1 1/2"	79.5	43.5	28.5	60	60	GAI-S-38-G 1 1/2"