

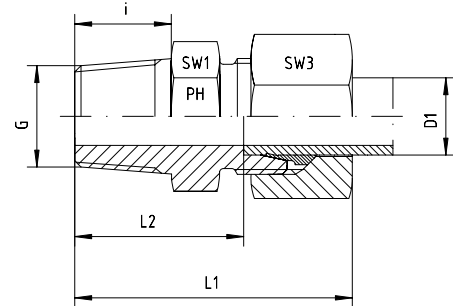
Male stud coupling to BSP taper

BOOK INDEX

SECTION INDEX

to ISO 8434-1 / DIN 2353

S series



Series	Pressure PN ⁽¹⁾	Tube O.D. D1	Thread G	Approx. Dimensions					Part code
				L1	L2	i	SW1	SW3	
S	630	6	R 1/8" keg			8	17	17	GE-S-06-R 1/8"-k
S	630	6	R 1/4" keg	40.0	25.0	12	17	17	GE-S-06-R 1/4"-k
S	630	6	R 3/8" keg	40.0	25.0	12	17	17	GE-S-06-R 3/8"-k
S	630	8	R 1/8" keg	35.0	19.0	8	17	19	GE-S-08-R 1/8"-k
S	630	8	R 1/4" keg	40.0	25.0	12	17	19	GE-S-08-R 1/4"-k
S	630	8	R 3/8" keg	40.0	25.0	12	19	19	GE-S-08-R 3/8"-k
S	630	10	R 1/4" keg	41.0	25.0	12	19	22	GE-S-10-R 1/4"-k
S	630	10	R 3/8" keg	41.0	25.0	12	19	22	GE-S-10-R 3/8"-k
S	630	10	R 1/2" keg			14	22	22	GE-S-10-R 1/2"-k
S	630	12	R 1/4" keg	43.0	26.5	12	22	24	GE-S-12-R 1/4"-k
S	630	12	R 3/8" keg	42.0	25.0	12	22	24	GE-S-12-R 3/8"-k
S	630	12	R 1/2" keg	44.0	26.5	14	22	24	GE-S-12-R 1/2"-k
S	630	14	R 3/8" keg	46.0	27.0	12	24	27	GE-S-14-R 3/8"-k
S	630	14	R 1/2" keg	50.5	32.0	14	24	27	GE-S-14-R 1/2"-k
S	400	16	R 3/8" keg	48.0	28.5	12	27	30	GE-S-16-R 3/8"-k
S	400	16	R 1/2" keg	49.0	29.0	14	27	30	GE-S-16-R 1/2"-k
S	400	16	R 3/4" keg	53.0	31.5	16	27	30	GE-S-16-R 3/4"-k
S	400	20	R 1/2" keg	54.0	29.5	14	32	36	GE-S-20-R 1/2"-k
S	400	20	R 3/4" keg	55.0	33.5	16	32	36	GE-S-20-R 3/4"-k
S	160	20	R 1" keg	58.0	35.5	18	36	36	GE-S-20-R 1"-k
S	160	25	R 3/4" keg			16	41	46	GE-S-25-R 3/4"-k
S	160	25	R 1" keg	59.0	33.0	18	41	46	GE-S-25-R 1"-k
S	160	30	R 1 1/4" keg	63.0	35.5	20	46	50	GE-S-30-R 1 1/4"-k
S	160	38	R 1 1/2" keg	81.0	49.0	22	55	60	GE-S-38-R 1 1/2"-k

⁽¹⁾ These pressure ratings are only valid when screwed into a taper female thread.

Fittings can be supplied with nuts with silver-plated threads to help to prevent galling, or can be supplied body only - no nut or cutting ring.

If you require silver-plated nuts, use suffix -SC. If you require body only, use suffix -OMD.

Eg. GE-S-12-R 3/8"-k-SC, or GE-S-12-R 3/8"-k-OMD