

Male stud coupling to metric parallel

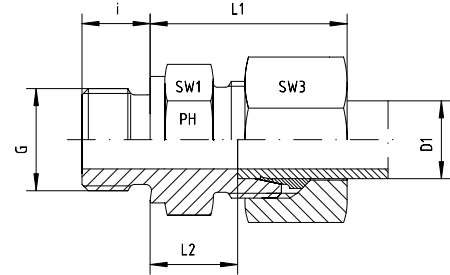
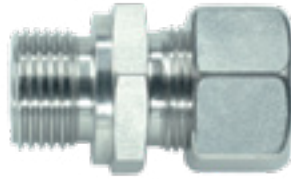
BOOK INDEX

SECTION INDEX

to ISO 8434-1 / DIN 2353

S series

Form B sealing shoulder



Series	Pressure PN	Tube O.D. D1	Thread G	Approx. Dimensions					Part code
				L1	L2	i	SW1	SW3	
S	630	6	M 12 x 1.5	28.0	13.0	12	17	17	GE-S-06-M 12x1.5
S	630	6	M 14 x 1.5			12	19	17	GE-S-06-M 14x1.5
S	630	8	M 12 x 1.5	32.0	15.0	12	17	19	GE-S-08-M 12x1.5
S	630	8	M 14 x 1.5	30.0	15.0	12	19	19	GE-S-08-M 14x1.5
S	630	8	M 16 x 1.5			12	22	19	GE-S-08-M 16x1.5
S	630	10	M 14 x 1.5			12	19	22	GE-S-10-M 14x1.5
S	630	10	M 16 x 1.5	31.0	15.0	12	22	22	GE-S-10-M 16x1.5
S	630	10	M 18 x 1.5	31.0	15.0	12	24	22	GE-S-10-M 18x1.5
S	630	12	M 12 x 1.5	33.5	16.5	12	22	24	GE-S-12-M 12x1.5
S	630	12	M 14 x 1.5	33.0	16.0	12	22	24	GE-S-12-M 14x1.5
S	630	12	M 16 x 1.5	35.5	17.0	12	22	24	GE-S-12-M 16x1.5
S	630	12	M 18 x 1.5	33.0	17.0	12	24	24	GE-S-12-M 18x1.5
S	630	12	M 20 x 1.5			14	27	24	GE-S-12-M 20x1.5
S	400	12	M 22 x 1.5	36.5	17.5	14	27	24	GE-S-12-M 22x1.5
S	630	14	M 20 x 1.5	37.0	19.0	14	27	27	GE-S-14-M 20x1.5
S	400	14	M 22 x 1.5			14	27	27	GE-S-14-M 22x1.5
S	400	16	M 18 x 1.5		18.0	12	27	30	GE-S-16-M 18x1.5
S	400	16	M 22 x 1.5	37.0	18.5	14	27	30	GE-S-16-M 22x1.5
S	400	20	M 27 x 2	42.5	20.5	16	32	36	GE-S-20-M 27x2
S	400	25	M 33 x 2	47.0	23.0	18	41	46	GE-S-25-M 33x2
S	250	30	M 42 x 2	50.0	23.5	20	50	50	GE-S-30-M 42x2
S	250	38	M 48 x 2	57.0	26.0	22	55	60	GE-S-38-M 48x2

Fittings can be supplied with nuts with silver-plated threads to help to prevent galling, or can be supplied body only - no nut or cutting ring.

If you require silver-plated nuts, use suffix -SC. If you require body only, use suffix -OMD.

Eg. GE-S-12-M 14x1.5-SC, or GE-S-12-M 14x1.5-OMD.