

Male stud coupling to BSP parallel

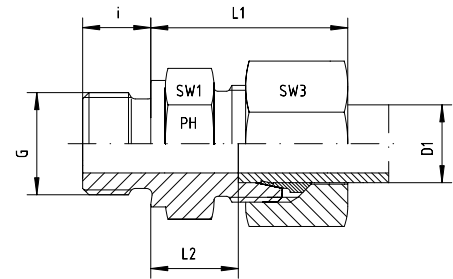
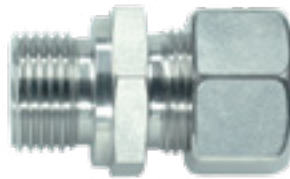
BOOK INDEX

SECTION INDEX

to ISO 8434-1 / DIN 2353

S series

Form B sealing shoulder



Series	Pressure PN	Tube O.D. D1	Thread G	Approx. Dimensions					Part code
				L1	L2	i	SW1	SW3	
S	630	6	G 1/8"	28.0	13.0	8	14	17	GE-SR-06-G 1/8"
S	630	6	G 1/4"	28.0	13.0	12	19	17	GE-SR-06-G 1/4"
S	630	6	G 3/8"	30.0	15.5	12	22	19	GE-SR-06-G 3/8"
S	630	6	G 1/2"	34.0	17.0	14	27	19	GE-SR-06-G 1/2"
S	630	8	G 1/8"		14.0	8	17	19	GE-SR-08-G 1/8"
S	630	8	G 1/4"	30.0	15.0	12	19	19	GE-SR-08-G 1/4"
S	630	8	G 3/8"		15.5	12	22	19	GE-SR-08-G 3/8"
S	630	8	G 1/2"		15.0	14	27	19	GE-SR-08-G 1/2"
S	630	10	G 1/8"		13.5	8	19	22	GE-SR-10-G 1/8"
S	630	10	G 1/4"		14.5	12	19	22	GE-SR-10-G 1/4"
S	630	10	G 3/8"	31.0	15.0	12	22	22	GE-SR-10-G 3/8"
S	630	10	G 1/2"		13.5	14	27	22	GE-SR-10-G 1/2"
S	630	10	G 3/4"			16	32	22	GE-SR-10-G 3/4"
S	630	12	G 1/4"		16.5	12	22	24	GE-SR-12-G 1/4"
S	630	12	G 3/8"	33.0	17.0	12	22	24	GE-SR-12-G 3/8"
S	630	12	G 1/2"	34.0	17.5	14	27	24	GE-SR-12-G 1/2"
S	630	12	G 3/4"	36.0	17.5	16	32	24	GE-SR-12-G 3/4"
S	630	14	G 1/4"	37.0	17.0	12	24	27	GE-SR-14-G 1/4"
S	630	14	G 3/8"	37.0	17.0	12	24	27	GE-SR-14-G 3/8"
S	630	14	G 1/2"	37.0	19.0	14	27	27	GE-SR-14-G 1/2"
S	400	14	G 3/4"		19.0	16	32	27	GE-SR-14-G 3/4"
S	400	16	G 1/4"	38.0	17.5	12	27	30	GE-SR-16-G 1/4"
S	400	16	G 3/8"		18.0	12	27	30	GE-SR-16-G 3/8"
S	400	16	G 1/2"	37.0	18.5	14	27	30	GE-SR-16-G 1/2"
S	400	16	G 3/4"	39.0	20.5	16	32	30	GE-SR-16-G 3/4"
S	400	16	G 1"	43.5	22.5	18	41	30	GE-SR-16-G 1"
S	400	20	G 3/8"		18.0	12	32	36	GE-SR-20-G 3/8"
S	400	20	G 1/2"		20.5	14	32	36	GE-SR-20-G 1/2"
S	400	20	G 3/4"	42.0	20.5	16	32	36	GE-SR-20-G 3/4"
S	400	20	G 1"		22.5	18	41	36	GE-SR-20-G 1"
S	400	20	G 1 1/4"		22.5	20	50	36	GE-SR-20-G 1 1/4"
S	400	25	G 1/2"		23.0	14	41	46	GE-SR-25-G 1/2"
S	400	25	G 3/4"		23.0	16	41	46	GE-SR-25-G 3/4"
S	400	25	G 1"	47.0	23.0	18	41	46	GE-SR-25-G 1"
S	250	25	G 1 1/4"		23.0	20	50	46	GE-SR-25-G 1 1/4"
S	250	30	G 3/4"		25.5	16	46	50	GE-SR-30-G 3/4"
S	250	30	G 1"	50.0	23.5	18	46	50	GE-SR-30-G 1"
S	250	30	G 1 1/4"	50.0	23.5	20	50	50	GE-SR-30-G 1 1/4"
S	250	30	G 1 1/2"	50.0	23.5	22	55	50	GE-SR-30-G 1 1/2"
S	250	38	G 1"	42.0	26.0	18	46	50	GE-SR-38-G 1"
S	250	38	G 1 1/4"		23.0	20	55	60	GE-SR-38-G 1 1/4"
S	250	38	G 1 1/2"	57.0	26.0	22	55	60	GE-SR-38-G 1 1/2"
S	250	38	G 2"				70	60	GE-SR-38-G 2"