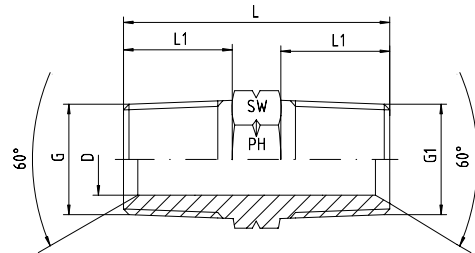


## NPT male male

BOOK INDEX

SECTION INDEX

### NPT 60° coned male male



5

Pressure PN	Thread		Approx. Dimensions				Part code
	G = NPT	G1 = NPT	L	L1	D	SW	
630	1/8"-27	1/8"-27	27.0	10.0	5.0	12	1282810-02-02
630	1/4"-18	1/4"-18	36.5	15.0	7.0	14	1282810-04-04
630	3/8"-18	3/8"-18	36.5	15.3	9.0	19	1282810-06-06
630	1/2"-14	1/2"-14	48.4	20.0	13.5	22	1282810-08-08
630	3/4"-14	3/4"-14	50.0	20.0	18.0	27	1282810-12-12
400	1"-11.5	1"-11.5	59.0	25.0	21.0	36	1282810-16-16
400	1 1/4"-11.5	1 1/4"-11.5	63.0	25.5	31.5	46	1282810-20-20
400	1 1/2"-11.5	1 1/2"-11.5	65.0	26.0	36.0	50	1282810-24-24
315	2"-11.5	2"-11.5	68.0	26.0	46.0	65	1282810-32-32