

2-way low pressure lever operated ball valve

BOOK INDEX

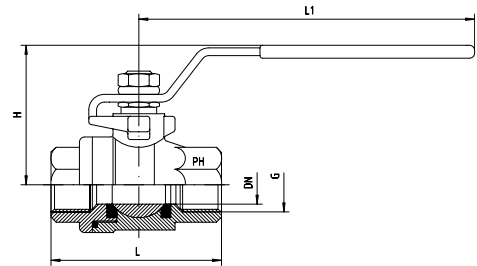
SECTION INDEX

BSP female thread to ISO 228

Full bore, material AISI 316

Ball and stem seal PTFE
(-20°C to +180°C)

When operating at higher temperatures, please refer to below pressure diagram.



Size	DN	Pressure PB	Approx. Dimensions				Part code
			G	H	L	L1	
1/8"	8.5	63	1/8"	50	55.0	100.0	KH-G 1/8"
1/4"	11.5	63	1/4"	50	55.0	100.0	KH-G 1/4"
3/8"	12.5	63	3/8"	50	55.0	100.0	KH-G 3/8"
1/2"	15.0	63	1/2"	60	65.0	130.0	KH-G 1/2"
3/4"	20.0	63	3/4"	64	72.0	130.0	KH-G 3/4"
1"	25.0	63	1"	71	84.0	165.0	KH-G 1"
1 1/4"	32.0	63	1 1/4"	78	94.0	165.0	KH-G 1 1/4"
1 1/2"	38.0	63	1 1/2"	86	110.0	190.0	KH-G 1 1/2"
2"	50.0	63	2"	95	126.0	190.0	KH-G 2"
2 1/2"	65.0	40	2 1/2"	130	161.0	250.0	KH-G 2 1/2"
3"	80.0	40	3"	148	178.0	250.0	KH-G 3"

