



Pegasus
hydraulics

Hose inserts & ferrules





TERMINAL BURCHARDKAI

CSA

ANNEBRI

	Product Groups	Page
	Working Pressure for Hose Fittings	2.02
	Product Overview of Ferrules and Hoses	2.03
	Product Overview of Ferrules and Hoses	2.04
	Ferrules	
	Ferrules - PF-PTFE	2.05
	Ferrules - PF-W-PTFE	2.06
	Ferrules - PF-R7	2.07
	Ferrules - P1	2.08
	Ferrules - P9	2.09
	Ferrules - P3	2.10
	Ferrules - P2	2.11
	Ferrules - P8	2.12
	Ferrules - P5	2.13
	Tapered Nipples with O-ring	
	Light Series - Straight	2.14
	Heavy Series - Straight	2.15
	Light Series - 45°-Elbow	2.16
	Heavy Series - 45°-Elbow	2.17
	Light Series - 90°-Elbow	2.18
	Universal Tapered Nipples	
	Light Series - Straight	2.20
	Light Series - 90°-Elbow	2.21
	Pipe Connectors	
	Light Series - Straight	2.23
	Heavy Series - Straight	2.24
	Straight	2.25
	45°-Elbow	2.26
	Pipe Connectors for Twin Ferrule Couplings	
	Straight	2.28
	Tapered Nipples	
	BSP - 60° - Straight	2.29
	BSP - 60° - 90°-Elbow	2.30
	Nipples - Flat sealing	
	BSP - Straight	2.32
	BSP - 90°-Elbow	2.33
	JIC - 37°	
	Female Nipples - Straight	2.35
	Female Nipples - 45°-Elbow	2.36
	Female Nipples - 90°-Elbow	2.37
	Female Nipples with Double Hexagon	2.38
	Male Nipples	
	Light Series - Metric - 24°-Cone	2.40
	Heavy Series - Metric - 24°-Cone	2.41
	BSP - 60°-Cone	2.42
	BSP - Flat sealing	2.43
	Taper	2.44
	NPT	2.45

	Product Groups	Page
	Hose Menders	2.46
	Waterwash-Nipples	2.47
	SAE-Flanged Nipples	
	Straight	2.48
	90°-Elbow	2.49
	Bolts	2.51
	Banjos	2.52
	Banjos	2.53
	SAE-Flange Clamp	2.54
	SAE-Split Flange Halves	2.55
	Metric Screws	2.55
	Quick-Disconnect O-Nipples	2.56
	ORFS-Male Nipples	2.57
	ORFS-Nipples	
	Straight	2.58
	90°-Elbow	2.59
	Push-Lock Inserts - PL	
	Tapered Nipples with O-ring - Light Series - Straight	2.61
	Pipe Connectors - Light Series - Straight	2.62
	Tapered Nipples - BSP - 60° - Straight	2.63
	Male Nipples - Light Series - Metric - 24°-Cone	2.64
	Male Nipples - BSP - 60°-Cone	2.65



Product Overview

BOOK INDEX

SECTION INDEX

Please note the maximum allowed working pressures for hose fitting connections according to their International Standards as described in:

- DIN 20066
- DIN 7641
- DIN 7642
- SAE 514
- SAE J 518
- SAE J 1453
- BS 5200-ISO WD 8434-6

The high quality manufacturing process of our hose couplings generally exceed the above standards.

The pressure rating of the hose assembly, including **all** of the components, including fittings and adapters, must be defined based on the pressure rating of the weakest component.

Description	Standards	Max. Working Pressure in bar (PN)											
		inch											
		3/16"	1/4"	5/16"	3/8"	1/2"	5/8"	3/4"	1"	1 1/4"	1 1/2"	2"	
		Dash											
		03	04	05	06	08	10	12	16	20	24	32	
		DN											
		5	6	8	10	12	16	19	25	31	38	51	
Male Nipples - BSP + Taper	AGR + AGRk	BS 5200 - ISO WD8434-6	350	630	550	550	430	350	350	280	250	210	210
Tapered Nipples with O-ring	DKOR	BS 5200 - ISO WD8434-6							350	280	250	210	210
Tapered Nipples - BSP	DKR + DRF	BS 5200 - ISO WD8434-6	500	630	550	550	430	350	350	280	160	125	80
Universal Tapered Nipples	DKL	DIN 20066	250	250	250	250	250	160					
Universal Tapered Nipples	DKLL	DIN 20066							63	63	63	63	40
Metric-Male Nipples 24°	CEL	DIN 20066	415	500	500	400	400	400	280	250	250	250	
Tapered Nipples with O-ring	DKOL	DIN 20066	415	500	500	400	400	400	280	250	250	250	
Metric-Male Nipples 24°	CES	DIN 20066	630	630	630	630	630	450	420	420	420	420	
Tapered Nipples with O-ring	DKOS	DIN 20066	630	630	630	630	630	450	420	420	420	420	
Banjós	RGN	DIN 7641 + 7642	300	300	300	300	300	250	250	250			
JIC-37°-Male Nipples	AGJ	SAE 514	410	410	350	350	350	350	350	280	210	160	160
JIC-37°-Female Nipples	DKJ	SAE 514	410	410	350	350	350	350	350	280	210	160	160
Male Nipples NPT	AGN	SAE 514	630	630	630	630	630	350	630	400	400	400	315
ORFS Male Nipples	MORFS	SAE J 1453	420	460	460	460	420	420	420	350	275	210	
ORFS-Nipples - Straight	FORFS - Straight	SAE J 1453	420	460	460	460	420	420	420	350	275	210	
ORFS-Nipples - Elbow	FORFS - Elbow	SAE J 1453	420	460	460	460	420	420	420	350	275	210	
SAE-Flanged Nipples	SFL 3000 P.S.I.	SAE J 518 / ISO 6162-1					350		350	350	280	210	210
SAE-Flanged Nipples	SFS 6000 P.S.I.	SAE J 518 / ISO 6162-2					420		420	420	420	420	420
Quick-disconnect Nipple	STN	DIN 20043		640		530	500		450	400	300	145	130
Pressure-wash Inserts	DKO-KA		500	500	500	500	500						



Product Overview

BOOK INDEX

SECTION INDEX

2

Hose-Type			2 TE - EN 854	3 TE - EN 854	1 ST - EN 853	2 ST - EN 853	1 SN - EN 853 SAE 100 R1AT	2 SN - EN 853 SAE 100 R2AT
DN	Size dash	inch	Ferrule-Type	Ferrule-Type	Ferrule-Type	Ferrule-Type	Ferrule-Type	Ferrule-Type
05	03	3/16"					P1 non skive	P2 non skive
06	04	1/4"	P1 non skive	P2 non skive	P1 skive	P3 skive	<u>P1 / P5 non skive</u> P1 skive	<u>P2 / P5 non skive</u> P3 skive
08	05	5/16"	P1 non skive	P2 non skive	P1 skive	P3 skive	<u>P1 / P5 non skive</u> P1 skive	<u>P2 / P5 non skive</u> P3 skive
10	06	3/8"	P1 non skive	P2 non skive	P1 skive	P3 skive	<u>P1 / P5 non skive</u> P1 skive	<u>P2 / P5 non skive</u> P3 skive
12	08	1/2"	P1 non skive	P2 non skive	P1 skive	P3 skive	<u>P1 / P5 non skive</u> P1 skive	<u>P2 / P5 non skive</u> P3 skive
16	10	5/8"	P1 non skive	P2 non skive	P1 skive	P3 skive	<u>P1 / P5 non skive</u> P1 skive	<u>P2 / P5 non skive</u> P3 skive
19	12	3/4"	P1 non skive	P2 non skive	P1 skive	P3 skive	<u>P1 / P5 non skive</u> P1 skive	<u>P2 / P5 non skive</u> P3 skive
25	16	1"	P1 non skive	P2 non skive	P1 skive	P3 skive	<u>P1 / P5 non skive</u> P1 skive	<u>P2 / P5 non skive</u> P3 skive
31	20	1 1/4"		P2 non skive	P1 skive	P3 skive	P1 <u>non skive</u> skive	<u>P8 non skive</u> P3 skive
38	24	1 1/2"		P2 non skive	P1 skive	P3 skive	P1 <u>non skive</u> skive	<u>P8 non skive</u> P3 skive
51	32	2"		P2 non skive	P1 skive	P3 skive	P1 <u>non skive</u> skive	<u>P8 non skive</u> P3 skive
60	38	2 3/8"		P2 non skive				P8 non skive
63	40	2 1/2"						
76	48	3"						P8 non skive
80				P2 non skive				



Product Overview

BOOK INDEX

SECTION INDEX

2

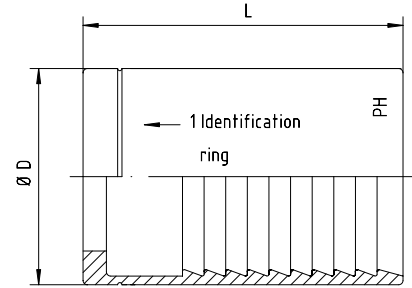
Hose-Type		1 SC - EN 857	2 SC - EN 857	4 SP - EN 856	4 SH - EN 856	R13 - EN 856	SAE 100 R15	R7 - EN 855 R8 - EN 855	PTFE - flat	PTFE - Convoluted
DN	Size dash	Ferrule-Type	Ferrule-Type	Ferrule-Type	Ferrule-Type Interlock	Ferrule-Type Interlock	Ferrule-Type Interlock	Ferrule-Type	Ferrule-Type	Ferrule-Type
05	03							PF-R7 non skive	PF-PTFE	
06	04	P9 non skive	<u>P1 / P5 non skive</u> P1 skive	P3Sp4-DN 06				PF-R7 non skive	PF-PTFE	PF-W-PTFE
08	05	P9 non skive	<u>P1 / P5 non skive</u> P1 skive					PF-R7 non skive	PF-PTFE	PF-W-PTFE
10	06	P9 non skive	<u>P1 / P5 non skive</u> P1 skive	P3 skive				PF-R7 non skive	PF-PTFE	PF-W-PTFE
12	08	P9 non skive	<u>P1 / P5 non skive</u> P1 skive	P3 skive				PF-R7 non skive	PF-PTFE	PF-W-PTFE
16	10	P1 non skive	<u>P1 / P5 non skive</u> P1 skive	P3 skive				PF-R7 non skive	PF-PTFE	PF-W-PTFE
19	12	P1 non skive	<u>P1 / P5 non skive</u> P1 skive	P3 skive	P4-I internal+ external skive	P6-I internal+ external skive	P7-I internal+ external skive	PF-R7 non skive	PF-PTFE	PF-W-PTFE
25	16	P1 non skive	<u>P1 / P5 non skive</u> P1 skive	P3 skive	P4-I internal+ external skive	P6-I internal+ external skive	P7-I internal+ external skive	PF-R7 non skive	PF-PTFE	PF-W-PTFE
31	20		P8 non skive	P3 skive	P4-I internal+ external skive	P6-I internal+ external skive	P7-I internal+ external skive			PF-W-PTFE
38	24		P8 non skive	P3 skive	P4-I internal+ external skive	P6-I internal+ external skive	P7-I internal+ external skive			
51	32		P8 non skive	P3Sp4-DN 51	P4-I internal+ external skive	P6-I internal+ external skive				
60	38									
63	40		P8 non skive							
76	48		P8 non skive							
80										

PF-PTFE

For Hose Type:

PTFE-Hose, heavy wall,
with 1 braid

For use with standard inserts pp.
2.14–2.60



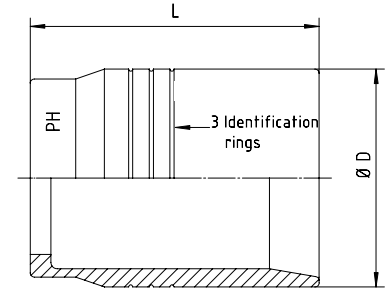
Hose DN	Bore in.	Notes		Part code
		D	L	
05	3/16"	12	24.5	PF-PTFE-DN 05
06	1/4"	14	33.0	PF-PTFE-DN 06
08	5/16"	17	33.0	PF-PTFE-DN 08
10	3/8"	19	33.0	PF-PTFE-DN 10
12	1/2"	23	35.0	PF-PTFE-DN 12
16	5/8"	27	38.0	PF-PTFE-DN 16
19	3/4"	30	44.0	PF-PTFE-DN 19
25	1"	37	50.0	PF-PTFE-DN 25

PF-W-PTFE

For Hose Type:

PT3W - PTFE-Convolut-ed-Hose,
with 1 braid

For use with standard inserts pp.
2.14–2.60



Hose DN	Bore in.	D	L	Notes	Part code
06	1/4"	18.0	33.0		PF-W-PTFE-DN 06
08	5/16"	20.0	33.0		PF-W-PTFE-DN 08
10	3/8"	23.5	33.0		PF-W-PTFE-DN 10
12	1/2"	26.3	35.0		PF-W-PTFE-DN 12
16	5/8"	30.0	38.0		PF-W-PTFE-DN 16
19	3/4"	34.3	44.0		PF-W-PTFE-DN 19
25	1"	40.6	50.0		PF-W-PTFE-DN 25
31	1 1/4"	51.0	66.0		PF-W-PTFE-DN 31

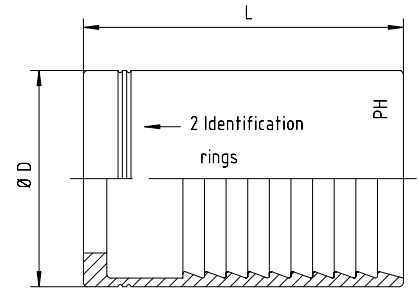
PF-R7 - non skive

For Hose Type:

R7 - DIN EN 855

R8 - DIN EN 855

For use with standard inserts
pp. 2.14–2.60



Hose DN	Bore in.	Notes		Part code
		D	L	
05	3/16"	14	26.5	PF-R7-DN 05
06	1/4"	18	34.5	PF-R7-DN 06
08	5/16"	19	34.5	PF-R7-DN 08
10	3/8"	22	35.0	PF-R7-DN 10
12	1/2"	25	37.0	PF-R7-DN 12
16	5/8"	30	40.0	PF-R7-DN 16
19	3/4"	33	45.0	PF-R7-DN 19
25	1"	40	50.0	PF-R7-DN 25

Ferrules

BOOK INDEX

SECTION INDEX

P1 For Hose Type:

2 TE - DIN - EN 854 - DN <25

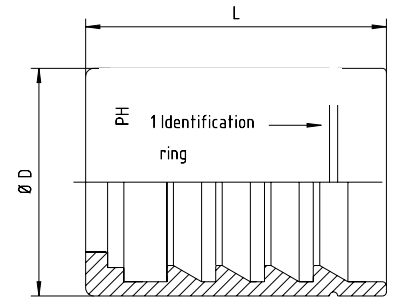
1 SN - DIN - EN 853
+ SAE 100 R1AT

1 ST - DIN - EN 853
+ SAE 100 R 1 A

1 SC - DIN - EN 857 - DN 16 - 19 - 25

2 SC - Compact - DIN - EN 857

For use with standard inserts
pp. 2.14–2.60



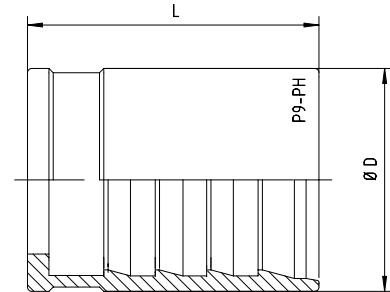
2

Hose DN	Bore in.	Notes		Part code	
		D	L		
05	3/16"	21	23.0	only for 1 SN	P1-DN 05
06	1/4"	20	34.5		P1-DN 06
08	5/16"	22	34.5		P1-DN 08
10	3/8"	25	35.0		P1-DN 10
12	1/2"	28	37.0		P1-DN 12
16	5/8"	32	40.0		P1-DN 16
19	3/4"	36	45.0		P1-DN 19
25	1"	45	50.0		P1-DN 25
31	1 1/4"	55	70.0		P1-DN 31
38	1 1/2"	60	70.0		P1-DN 38
51	2"	76	80.0		P1-DN 51

P9 - non skive

For Hose Type:
1 SC - DIN - EN 857

For use with standard inserts
pp. 2.14–2.60



2

Hose DN	Bore in.	Notes		Part code
		D	L	
06	1/4"	18	30.5	P9-DN 06
08	5/16"	19	32.0	P9-DN 08
10	3/8"	22	33.0	P9-DN 10
12	1/2"	26	34.0	P9-DN 12

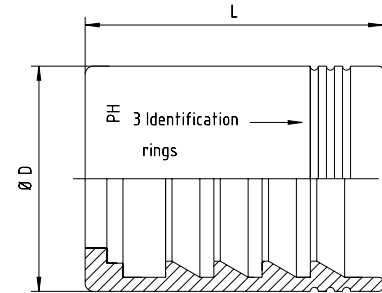
P3 - skive

For Hose Type:
2 ST - DIN - EN 853 +
SAE 100 R2A

2 SN - DIN - EN 853 +
SAE 100 R2AT

4 SP - DIN - EN 856

For use with standard inserts
pp. 2.14–2.60



Hose DN	Bore in.	Notes		Part code	
		D	L		
06	1/4"	22	34.5	for use with 4SP - marked with Sp4	P3Sp4-DN 06
06	1/4"	22	34.5	not to be used on 4SP	P3-DN 06
08	5/16"	24	34.5		P3-DN 08
10	3/8"	26	35.0		P3-DN 10
12	1/2"	30	37.0		P3-DN 12
16	5/8"	33	40.0		P3-DN 16
19	3/4"	38	45.0		P3-DN 19
25	1"	46	50.0		P3-DN 25
31	1 1/4"	58	70.0		P3-DN 31
38	1 1/2"	64	70.0		P3-DN 38
51	2"	76	80.0	not to be used on 4SP	P3-DN 51
51	2"	76	80.0	for use with 4SP - marked with Sp4	P3Sp4-DN 51

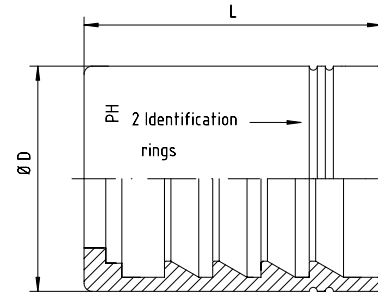
P2 - non skive

For Hose Type:

2 SN - DIN - EN 853 +
SAE 100 R2AT - DN 06 up
to DN 25

3 TE - DIN EN 854 + 3 TB

For use with standard inserts
pp. 2.14–2.60



Hose DN	Bore in.	Notes		Part code	
		D	L		
05	3/16"	21.0	23.0	only for 2 SN	P2-DN 05
06	1/4"	22.0	34.5		P2-DN 06
08	5/16"	24.0	34.5		P2-DN 08
10	3/8"	26.0	35.0		P2-DN 10
12	1/2"	30.0	37.0		P2-DN 12
16	5/8"	33.0	40.0		P2-DN 16
19	3/4"	38.0	45.0		P2-DN 19
25	1"	46.0	50.0		P2-DN 25
31	1 1/4"	55.0	70.0	not for 2 SN	P2-DN 31
38	1 1/2"	60.0	70.0	not for 2 SN	P2-DN 38
51	2"	76.0	80.0	not for 2 SN	P2-DN 51
60	2 3/8"	82.5	72.0	not for 2 SN	P2-DN 60
80		108.0	90.0	not for 2 SN	P2-DN 80

Please Note

- for R2AT / 2SN hose, you must use the P2 ferrule up to and including 1" hose.
- For 1 1/4" and above you must use the P8 ferrule (following page, 2.12)

Ferrules

BOOK INDEX

SECTION INDEX

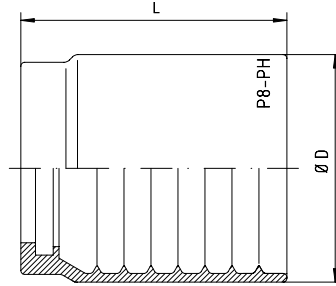
P8 - non skive

For Hose Type:

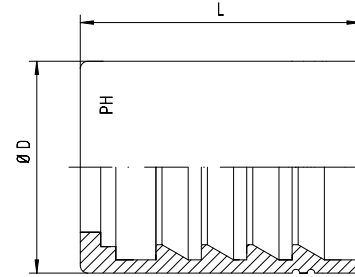
2 SN - DIN - EN 853

+ 2 SC - DIN - EN 857

For use with standard inserts
pp. 2.14–2.60



DN 31, 38, 51, 63



DN 60, 76



Hose DN	Bore in.	D	L	Notes	Part code
31	1 1/4"	59.0	66.5		P8-DN 31
38	1 1/2"	67.0	67.0		P8-DN 38
51	2"	80.0	75.0		P8-DN 51
60	2 3/8"	82.5	72.0		P8-DN 60
63	2 1/2"	89.0	69.0		P8-DN 63
76	3"	103.0	75.0		P8-DN 76

P5 - non skive

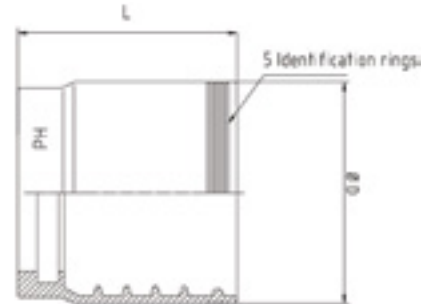
For Hose Type:

1 SN - DIN - EN 853

2 SN - DIN - EN 853

2SC - DIN - EN 857

For use with standard inserts
pp. 2.14–2.60



Hose DN	Bore in.	Notes		Part code
		D	L	
06	1/4"	23	31.7	P5-DN 06
08	5/16"	24	31.5	P5-DN 08
10	3/8"	26	33.3	P5-DN 10
12	1/2"	29	34.5	P5-DN 12
16	5/8"	33	39.0	P5-DN 16
19	3/4"	37	44.0	P5-DN 19
25	1"	46	45.7	P5-DN 25

L series DIN Female Straight

BOOK INDEX

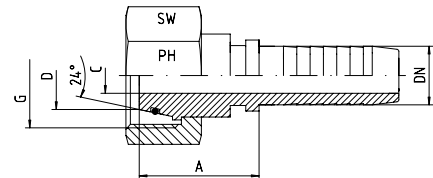
SECTION INDEX

To interface with compression fittings with a 24° cone to DIN 2353 / DIN EN ISO 8434-1

Light Series = DKOL - Straight

O-ring = NBR

On Request: Viton



2

Hose DN	Bore in.	Thread G	Tube O.D. D	Approx. Dimensions			Part code
				A	C	SW	
05	3/16"	M 12 x 1.5	6	19.5	3.0	14	DKOL-06-DN 05
06	1/4"	M 12 x 1.5	6	21.0	3.7	14	DKOL-06-DN 06
05	3/16"	M 14 x 1.5	8	23.5	3.0	17	DKOL-08-DN 05
06	1/4"	M 14 x 1.5	8	25.0	4.0	17	DKOL-08-DN 06
08	5/16"	M 14 x 1.5	8	22.0	5.5	17	DKOL-08-DN 08
10	3/8"	M 14 x 1.5	8	29.0	4.5	17	DKOL-08-DN 10
06	1/4"	M 16 x 1.5	10	27.0	4.0	19	DKOL-10-DN 06
08	5/16"	M 16 x 1.5	10	26.0	5.5	19	DKOL-10-DN 08
10	3/8"	M 16 x 1.5	10	26.0	7.0	19	DKOL-10-DN 10
06	1/4"	M 18 x 1.5	12	28.0	4.0	22	DKOL-12-DN 06
08	5/16"	M 18 x 1.5	12	28.0	5.5	22	DKOL-12-DN 08
10	3/8"	M 18 x 1.5	12	26.0	7.0	22	DKOL-12-DN 10
12	1/2"	M 18 x 1.5	12	26.0	8.0	22	DKOL-12-DN 12
06	1/4"	M 22 x 1.5	15	28.5	4.0	27	DKOL-15-DN 06
08	5/16"	M 22 x 1.5	15	28.5	5.5	27	DKOL-15-DN 08
10	3/8"	M 22 x 1.5	15	26.0	7.0	27	DKOL-15-DN 10
12	1/2"	M 22 x 1.5	15	27.0	9.5	27	DKOL-15-DN 12
16	5/8"	M 22 x 1.5	15	29.5	10.0	27	DKOL-15-DN 16
10	3/8"	M 26 x 1.5	18	24.0	7.0	32	DKOL-18-DN 10
12	1/2"	M 26 x 1.5	18	28.0	9.5	32	DKOL-18-DN 12
16	5/8"	M 26 x 1.5	18	29.5	12.5	32	DKOL-18-DN 16
19	3/4"	M 26 x 1.5	18	32.0	12.0	32	DKOL-18-DN 19
12	1/2"	M 30 x 2	22	32.5	9.5	36	DKOL-22-DN 12
16	5/8"	M 30 x 2	22	31.0	12.5	36	DKOL-22-DN 16
19	3/4"	M 30 x 2	22	33.0	14.5	36	DKOL-22-DN 19
25	1"	M 30 x 2	22	35.0	17.0	36	DKOL-22-DN 25
16	5/8"	M 36 x 2	28	33.0	12.5	41	DKOL-28-DN 16
19	3/4"	M 36 x 2	28	34.5	14.5	41	DKOL-28-DN 19
25	1"	M 36 x 2	28	34.5	20.0	41	DKOL-28-DN 25
25	1"	M 45 x 2	35	42.5	20.0	50	DKOL-35-DN 25
31	1 1/4"	M 45 x 2	35	37.0	25.5	50	DKOL-35-DN 31
31	1 1/4"	M 52 x 2	42	42.0	25.5	60	DKOL-42-DN 31
38	1 1/2"	M 52 x 2	42	37.0	31.5	60	DKOL-42-DN 38

S series DIN Female Straight

BOOK INDEX

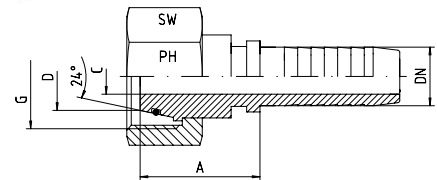
SECTION INDEX

To interface with compression fittings with a 24° cone to DIN 2353 / DIN EN ISO 8434-1

Heavy Series = DKOS - Straight

O-ring = NBR

On Request: Viton



2

Hose DN	Bore in.	Thread G	Tube O.D. D	Approx. Dimensions			Part code
				A	C	SW	
05	3/16"	M 14 x 1.5	6	19.5	3.0	17	DKOS-06-DN 05
06	1/4"	M 14 x 1.5	6	21.0	3.7	17	DKOS-06-DN 06
05	3/16"	M 16 x 1.5	8	23.5	3.0	19	DKOS-08-DN 05
06	1/4"	M 16 x 1.5	8	25.0	4.0	19	DKOS-08-DN 06
08	5/16"	M 16 x 1.5	8	22.0	5.5	19	DKOS-08-DN 08
10	3/8"	M 16 x 1.5	8	30.0	4.5	19	DKOS-08-DN 10
06	1/4"	M 18 x 1.5	10	27.0	4.0	22	DKOS-10-DN 06
08	5/16"	M 18 x 1.5	10	26.0	5.5	22	DKOS-10-DN 08
10	3/8"	M 18 x 1.5	10	26.0	7.0	22	DKOS-10-DN 10
06	1/4"	M 20 x 1.5	12	28.0	4.0	24	DKOS-12-DN 06
08	5/16"	M 20 x 1.5	12	28.0	5.5	24	DKOS-12-DN 08
10	3/8"	M 20 x 1.5	12	26.0	7.0	24	DKOS-12-DN 10
12	1/2"	M 20 x 1.5	12	26.0	8.0	24	DKOS-12-DN 12
08	5/16"	M 22 x 1.5	14	20.5	5.5	27	DKOS-14-DN 08
10	3/8"	M 22 x 1.5	14	27.0	7.0	27	DKOS-14-DN 10
12	1/2"	M 22 x 1.5	14	24.0	9.5	27	DKOS-14-DN 12
06	1/4"	M 24 x 1.5	16	31.5	4.0	30	DKOS-16-DN 06
08	5/16"	M 24 x 1.5	16	31.5	5.5	30	DKOS-16-DN 08
10	3/8"	M 24 x 1.5	16	31.5	7.0	30	DKOS-16-DN 10
12	1/2"	M 24 x 1.5	16	31.5	9.5	30	DKOS-16-DN 12
16	5/8"	M 24 x 1.5	16	31.5	11.0	30	DKOS-16-DN 16
10	3/8"	M 30 x 2	20	37.0	7.0	36	DKOS-20-DN 10
12	1/2"	M 30 x 2	20	36.5	9.5	36	DKOS-20-DN 12
16	5/8"	M 30 x 2	20	37.5	12.5	36	DKOS-20-DN 16
19	3/4"	M 30 x 2	20	33.5	14.5	36	DKOS-20-DN 19
12	1/2"	M 36 x 2	25	29.0	9.5	46	DKOS-25-DN 12
16	5/8"	M 36 x 2	25	40.5	12.5	46	DKOS-25-DN 16
19	3/4"	M 36 x 2	25	41.0	14.5	46	DKOS-25-DN 19
25	1"	M 36 x 2	25	39.5	20.0	46	DKOS-25-DN 25
19	3/4"	M 42 x 2	30	44.0	14.5	50	DKOS-30-DN 19
25	1"	M 42 x 2	30	44.5	20.0	50	DKOS-30-DN 25
31	1 1/4"	M 42 x 2	30	44.0	23.0	50	DKOS-30-DN 31
25	1"	M 52 x 2	38	50.5	20.0	60	DKOS-38-DN 25
31	1 1/4"	M 52 x 2	38	49.0	25.5	60	DKOS-38-DN 31
38	1 1/2"	M 52 x 2	38	40.5	29.0	60	DKOS-38-DN 38
38	1 1/2"	M 68 x 2	50	49.0	31.5	80	DKOS-50-DN 38

L series DIN Female 45 Elbow

BOOK INDEX

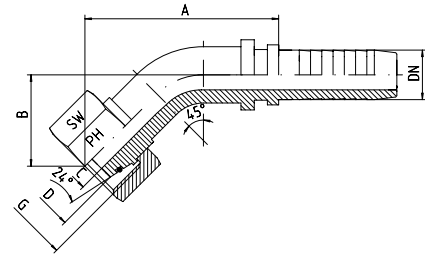
SECTION INDEX

To interface with compression fittings with a 24° cone to DIN 2353 / DIN EN ISO 8434-1

Light Series = DKOL - 45°

O-ring = NBR

On Request: Viton



2

Hose DN	Bore in.	Thread G	Tube O.D. D	Approx. Dimensions				Part code
				A	B	C	SW	
05	3/16"	M 12 x 1.5	6	44.5	22.5	3.0	14	DKOL-06-45°-DN 05
06	1/4"	M 12 x 1.5	6	37.0	15.0	4.0	14	DKOL-06-45°-DN 06
05	3/16"	M 14 x 1.5	8	37.0	16.5	3.0	17	DKOL-08-45°-DN 05
06	1/4"	M 14 x 1.5	8	38.5	16.5	4.0	17	DKOL-08-45°-DN 06
08	5/16"	M 14 x 1.5	8	51.0	26.0	4.5	17	DKOL-08-45°-DN 08
06	1/4"	M 16 x 1.5	10	38.5	16.5	4.0	19	DKOL-10-45°-DN 06
08	5/16"	M 16 x 1.5	10	44.5	19.0	5.5	19	DKOL-10-45°-DN 08
10	3/8"	M 16 x 1.5	10	45.5	20.0	7.0	19	DKOL-10-45°-DN 10
06	1/4"	M 18 x 1.5	12	42.0	19.5	4.0	22	DKOL-12-45°-DN 06
08	5/16"	M 18 x 1.5	12	44.5	19.0	5.5	22	DKOL-12-45°-DN 08
10	3/8"	M 18 x 1.5	12	43.5	18.5	7.0	22	DKOL-12-45°-DN 10
12	1/2"	M 18 x 1.5	12	62.5	27.5	8.5	22	DKOL-12-45°-DN 12
10	3/8"	M 22 x 1.5	15	53.5	21.5	7.0	27	DKOL-15-45°-DN 10
12	1/2"	M 22 x 1.5	15	54.5	20.5	9.5	27	DKOL-15-45°-DN 12
12	1/2"	M 26 x 1.5	18	60.5	23.5	9.0	32	DKOL-18-45°-DN 12
16	5/8"	M 26 x 1.5	18	65.0	26.5	12.5	32	DKOL-18-45°-DN 16
16	5/8"	M 30 x 2	22	91.5	36.5	12.0	36	DKOL-22-45°-DN 16
19	3/4"	M 30 x 2	22	70.0	28.0	14.5	36	DKOL-22-45°-DN 19
19	3/4"	M 36 x 2	28	79.0	34.0	14.5	41	DKOL-28-45°-DN 19
25	1"	M 36 x 2	28	93.0	33.0	20.0	41	DKOL-28-45°-DN 25
31	1 1/4"	M 45 x 2	35	100.0	44.0	25.0	50	DKOL-35-45°-DN 31
31	1 1/4"	M 52 x 2	42	114.5	45.0	25.0	60	DKOL-42-45°-DN 31
38	1 1/2"	M 52 x 2	42	111.0	48.0	31.0	60	DKOL-42-45°-DN 38

S series DIN Female 45 Elbow

BOOK INDEX

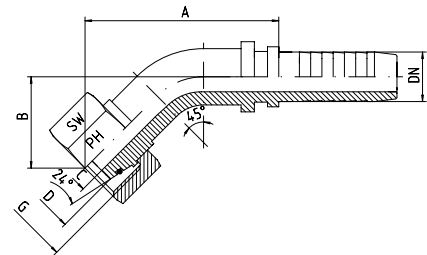
SECTION INDEX

To interface with compression fittings with a 24° cone to DIN 2353 / DIN EN ISO 8434-1

Heavy Series = DKOS - 45°

O-ring = NBR

On Request: Viton



2

Hose DN	Bore in.	Thread G	Tube O.D. D	Approx. Dimensions				Part code
				A	B	C	SW	
05	3/16"	M 14 x 1.5	6				17	DKOS-06-45°-DN 05
06	1/4"	M 14 x 1.5	6	37.0	15.0	4.0	17	DKOS-06-45°-DN 06
05	3/16"	M 16 x 1.5	8	37.0	16.5	3.0	19	DKOS-08-45°-DN 05
06	1/4"	M 16 x 1.5	8	38.5	16.5	4.0	19	DKOS-08-45°-DN 06
08	5/16"	M 16 x 1.5	8	48.0	23.0	4.0	19	DKOS-08-45°-DN 08
06	1/4"	M 18 x 1.5	10	38.5	16.5	4.0	22	DKOS-10-45°-DN 06
08	5/16"	M 18 x 1.5	10	44.5	19.0	5.5	22	DKOS-10-45°-DN 08
10	3/8"	M 18 x 1.5	10	45.5	20.0	7.0	22	DKOS-10-45°-DN 10
06	1/4"	M 20 x 1.5	12	42.0	19.5	4.0	24	DKOS-12-45°-DN 06
08	5/16"	M 20 x 1.5	12	44.5	19.0	5.5	24	DKOS-12-45°-DN 08
10	3/8"	M 20 x 1.5	12	43.5	18.5	7.0	24	DKOS-12-45°-DN 10
12	1/2"	M 20 x 1.5	12	62.5	27.5	8.5	24	DKOS-12-45°-DN 12
10	3/8"	M 22 x 1.5	14	54.5	23.5	7.0	27	DKOS-14-45°-DN 10
10	3/8"	M 24 x 1.5	16	55.5	24.0	7.0	30	DKOS-16-45°-DN 10
12	1/2"	M 24 x 1.5	16	57.0	25.0	9.5	30	DKOS-16-45°-DN 12
12	1/2"	M 30 x 2	20	65.0	32.0	9.5	36	DKOS-20-45°-DN 12
16	5/8"	M 30 x 2	20	69.0	28.0	12.5	36	DKOS-20-45°-DN 16
19	3/4"	M 30 x 2	20	71.5	27.0	12.5	36	DKOS-20-45°-DN 19
19	3/4"	M 36 x 2	25	83.0	37.0	14.5	46	DKOS-25-45°-DN 19
25	1"	M 36 x 2	25	98.0	39.0	18.5	46	DKOS-25-45°-DN 25
19	3/4"	M 42 x 2	30	89.5	40.0	14.5	50	DKOS-30-45°-DN 19
25	1"	M 42 x 2	30	98.0	39.5	20.0	50	DKOS-30-45°-DN 25
25	1"	M 52 x 2	38				60	DKOS-38-45°-DN 25
31	1 1/4"	M 52 x 2	38	116.0	47.0	25.0	60	DKOS-38-45°-DN 31
38	1 1/2"	M 68 x 2	50	137.0	53.0	31.0	80	DKOS-50-45°-DN 38

L series DIN Female 90 Elbow

BOOK INDEX

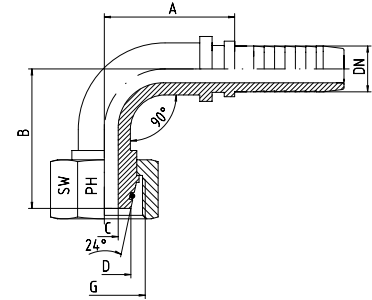
SECTION INDEX

To interface with compression fittings with a 24° cone to DIN 2353 / DIN EN ISO 8434-1

Light Series = DKOL - 90°

O-ring = NBR

On Request: Viton



2

Hose DN	Bore in.	Thread G	Tube O.D. D	Approx. Dimensions				Part code
				A	B	C	SW	
05	3/16"	M 12 x 1.5	6	28.0	37.0	3.0	14	DKOL-06-90°-DN 05
06	1/4"	M 12 x 1.5	6	28.0	28.5	4.0	14	DKOL-06-90°-DN 06
05	3/16"	M 14 x 1.5	8	28.0	28.5	3.0	17	DKOL-08-90°-DN 05
06	1/4"	M 14 x 1.5	8	28.0	28.5	4.0	17	DKOL-08-90°-DN 06
08	5/16"	M 14 x 1.5	8	35.0	47.0	4.5	17	DKOL-08-90°-DN 08
06	1/4"	M 16 x 1.5	10	28.5	29.5	4.0	19	DKOL-10-90°-DN 06
08	5/16"	M 16 x 1.5	10	31.5	39.0	5.5	19	DKOL-10-90°-DN 08
10	3/8"	M 16 x 1.5	10	35.0	37.5	7.0	19	DKOL-10-90°-DN 10
06	1/4"	M 18 x 1.5	12	29.0	33.5	4.0	22	DKOL-12-90°-DN 06
08	5/16"	M 18 x 1.5	12	34.5	37.0	5.5	22	DKOL-12-90°-DN 08
10	3/8"	M 18 x 1.5	12	34.0	38.0	7.0	22	DKOL-12-90°-DN 10
12	1/2"	M 18 x 1.5	12	45.0	53.0	8.5	22	DKOL-12-90°-DN 12
10	3/8"	M 22 x 1.5	15	42.5	41.5	7.0	27	DKOL-15-90°-DN 10
12	1/2"	M 22 x 1.5	15	44.0	43.0	9.5	27	DKOL-15-90°-DN 12
12	1/2"	M 26 x 1.5	18	46.5	51.0	9.5	32	DKOL-18-90°-DN 12
16	5/8"	M 26 x 1.5	18	56.0	52.0	12.5	32	DKOL-18-90°-DN 16
19	3/4"	M 26 x 1.5	18	59.0	70.0	13.0	32	DKOL-18-90°-DN 19
16	5/8"	M 30 x 2	22	57.0	63.5	12.0	36	DKOL-22-90°-DN 16
19	3/4"	M 30 x 2	22	61.0	58.0	14.5	36	DKOL-22-90°-DN 19
19	3/4"	M 36 x 2	28	70.0	62.5	14.5	41	DKOL-28-90°-DN 19
25	1"	M 36 x 2	28	82.0	70.0	20.0	41	DKOL-28-90°-DN 25
31	1 1/4"	M 45 x 2	35	87.0	85.0	25.0	50	DKOL-35-90°-DN 31
38	1 1/2"	M 45 x 2	35	105.0	114.0	28.0	50	DKOL-35-90°-DN 38
38	1 1/2"	M 52 x 2	42	104.0	103.0	31.0	60	DKOL-42-90°-DN 38

S series DIN Female 90 Elbow

BOOK INDEX

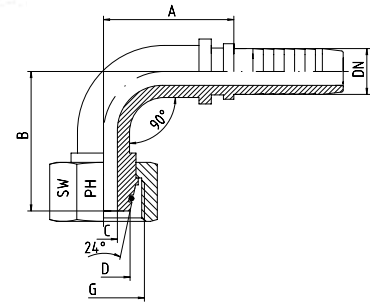
SECTION INDEX

To interface with compression fittings with a 24° cone to DIN 2353 / DIN EN ISO 8434-1

Heavy Series = DKOS - 90°

O-ring = NBR

On Request: Viton



2

Hose DN	Bore in.	Thread G	Tube O.D. D	Approx. Dimensions				Part code
				A	B	C	SW	
05	3/16"	M 14 x 1.5	6				17	DKOS-06-90°-DN 05
06	1/4"	M 14 x 1.5	6	28.0	28.5	4.0	17	DKOS-06-90°-DN 06
05	3/16"	M 16 x 1.5	8	28.0	28.5	3.0	19	DKOS-08-90°-DN 05
06	1/4"	M 16 x 1.5	8	28.0	29.5	4.0	19	DKOS-08-90°-DN 06
08	5/16"	M 16 x 1.5	8	36.0	40.5	4.0	19	DKOS-08-90°-DN 08
06	1/4"	M 18 x 1.5	10	28.5	29.5	4.0	22	DKOS-10-90°-DN 06
08	5/16"	M 18 x 1.5	10	31.5	39.0	5.5	22	DKOS-10-90°-DN 08
10	3/8"	M 18 x 1.5	10	35.0	37.5	7.0	22	DKOS-10-90°-DN 10
06	1/4"	M 20 x 1.5	12	29.0	33.5	4.0	24	DKOS-12-90°-DN 06
08	5/16"	M 20 x 1.5	12	34.5	37.0	5.5	24	DKOS-12-90°-DN 08
10	3/8"	M 20 x 1.5	12	34.0	38.0	7.0	24	DKOS-12-90°-DN 10
12	1/2"	M 20 x 1.5	12	45.0	53.0	8.5	24	DKOS-12-90°-DN 12
10	3/8"	M 22 x 1.5	14	42.0	42.0	7.0	27	DKOS-14-90°-DN 10
10	3/8"	M 24 x 1.5	16	43.0	42.5	7.0	30	DKOS-16-90°-DN 10
12	1/2"	M 24 x 1.5	16	44.0	45.5	9.5	30	DKOS-16-90°-DN 12
12	1/2"	M 30 x 2	20	46.0	59.0	9.5	36	DKOS-20-90°-DN 12
16	5/8"	M 30 x 2	20	59.0	51.0	12.5	36	DKOS-20-90°-DN 16
19	3/4"	M 30 x 2	20	61.5	54.5	12.5	36	DKOS-20-90°-DN 19
19	3/4"	M 36 x 2	25	72.0	64.0	14.5	46	DKOS-25-90°-DN 19
25	1"	M 36 x 2	25	79.0	79.0	18.5	46	DKOS-25-90°-DN 25
19	3/4"	M 42 x 2	30	73.0	73.5	14.5	50	DKOS-30-90°-DN 19
25	1"	M 42 x 2	30	85.0	84.0	20.0	50	DKOS-30-90°-DN 25
25	1"	M 52 x 2	38	106.5	96.5	20.0	60	DKOS-38-90°-DN 25
31	1 1/4"	M 52 x 2	38	101.0	100.0	25.0	60	DKOS-38-90°-DN 31
38	1 1/2"	M 68 x 2	50	124.0	111.0	31.0	80	DKOS-50-90°-DN 38

Universal Inserts

BOOK INDEX

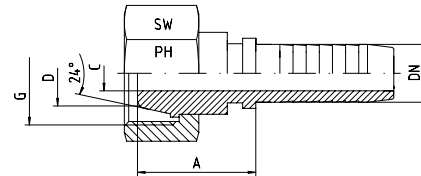
SECTION INDEX

For Fittings with 24°- and 60°-Cone

Light Series

DKL - Straight

DKLL - Straight



Hose DN	Bore in.	Thread G	Tube O.D. D	Approx. Dimensions			Part code
				A	C	SW	
05	3/16"	M 12 x 1.5	6	18.7	3.0	14	DKL-M 12x1.5-DN 05
06	1/4"	M 12 x 1.5	6	20.0	4.0	14	DKL-M 12x1.5-DN 06
06	1/4"	M 14 x 1.5	8	21.0	4.0	17	DKL-M 14x1.5-DN 06
08	5/16"	M 14 x 1.5	8	21.0	5.5	17	DKL-M 14x1.5-DN 08
06	1/4"	M 16 x 1.5	10	21.5	4.0	19	DKL-M 16x1.5-DN 06
08	5/16"	M 16 x 1.5	10	22.0	5.5	19	DKL-M 16x1.5-DN 08
10	3/8"	M 16 x 1.5	10	23.5	7.0	19	DKL-M 16x1.5-DN 10
06	1/4"	M 18 x 1.5	12		4.0	22	DKL-M 18x1.5-DN 06
08	5/16"	M 18 x 1.5	12	22.5	5.5	22	DKL-M 18x1.5-DN 08
10	3/8"	M 18 x 1.5	12	23.0	7.0	22	DKL-M 18x1.5-DN 10
10	3/8"	M 22 x 1.5	15	23.5	7.0	27	DKL-M 22x1.5-DN 10
12	1/2"	M 22 x 1.5	15	23.5	9.5	27	DKL-M 22x1.5-DN 12
16	5/8"	M 26 x 1.5	18	25.5	12.5	32	DKL-M 26x1.5-DN 16
19	3/4"	M 30 x 2	22	29.0	14.5	36	DKL-M 30x2-DN 19
25	1"	M 36 x 2	28	31.0	20.0	41	DKL-M 36x2-DN 25
31	1 1/4"	M 45 x 2	35	33.0	25.5	50	DKL-M 45x2-DN 31
38	1 1/2"	M 52 x 2	42	33.0	31.5	60	DKL-M 52x2-DN 38

Hose DN	Bore in.	Thread G	Tube O.D. D	Approx. Dimensions			Part code
				A	C	SW	
19	3/4"	M 30 x 1.5*		29.0	14.5	36	DKLL-M 30x1.5-DN 19
25	1"	M 38 x 1.5*		31.0	20.0	46	DKLL-M 38x1.5-DN 25
31	1 1/4"	M 45 x 1.5*		33.0	25.5	55	DKLL-M 45x1.5-DN 31
38	1 1/2"	M 52 x 1.5*		33.0	31.5	60	DKLL-M 52x1.5-DN 38
51	2"	M 65 x 2*		37.5	43.0	75	DKLL-M 65x2-DN 51
60	2 3/8"	M 78 x 2*		32.0	51.0	90	DKLL-M 78x2-DN 60
80	3"	M 100 x 2*		52.5	73.0	110	DKLL-M 100x2-DN 80

* Only for 60° cone

Universal Inserts

BOOK INDEX

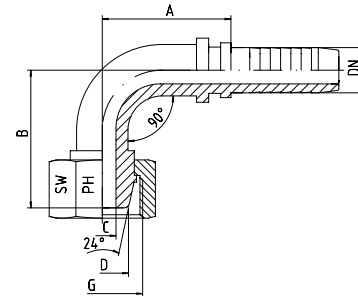
SECTION INDEX

For Fittings with 24°- and 60°-Cone

Light Series

DKL - 90°-Elbow

DKLL - 90°-Elbow



2

Hose DN	Bore in.	Thread G	Tube O.D. D	Approx. Dimensions				Part code
				A	B	C	SW	
05	3/16"	M 12 x 1.5	6	29.0	33.0	3.0	14	DKL-M 12x1.5-90°-DN 05
06	1/4"	M 12 x 1.5	6	29.0	28.0	4.0	14	DKL-M 12x1.5-90°-DN 06
06	1/4"	M 14 x 1.5	8	28.5	27.0	4.0	17	DKL-M 14x1.5-90°-DN 06
08	5/16"	M 14 x 1.5	8	35.5	41.0	5.5	17	DKL-M 14x1.5-90°-DN 08
06	1/4"	M 16 x 1.5	10				19	DKL-M 16x1.5-90°-DN 06
08	5/16"	M 16 x 1.5	10	32.5	35.0	5.5	19	DKL-M 16x1.5-90°-DN 08
10	3/8"	M 16 x 1.5	10	35.0	33.0	7.0	19	DKL-M 16x1.5-90°-DN 10
08	5/16"	M 18 x 1.5	12	34.0	36.0	5.5	22	DKL-M 18x1.5-90°-DN 08
10	3/8"	M 18 x 1.5	12	34.5	35.0	7.0	22	DKL-M 18x1.5-90°-DN 10
10	3/8"	M 22 x 1.5	15				27	DKL-M 22x1.5-90°-DN 10
12	1/2"	M 22 x 1.5	15	44.0	40.0	9.5	27	DKL-M 22x1.5-90°-DN 12
16	5/8"	M 26 x 1.5	18	55.0	49.0	12.5	32	DKL-M 26x1.5-90°-DN 16
19	3/4"	M 30 x 2	22	61.0	53.0	14.5	36	DKL-M 30x2-90°-DN 19
25	1"	M 36 x 2	28	80.0	67.5	20.0	41	DKL-M 36x2-90°-DN 25
31	1 1/4"	M 45 x 2	35	87.0	81.0	25.0	50	DKL-M 45x2-90°-DN 31
38	1 1/2"	M 52 x 2	42	104.0	100.0	31.5	60	DKL-M 52x2-90°-DN 38

Hose DN	Bore in.	Thread G	Tube O.D. D	Approx. Dimensions				Part code
				A	B	C	SW	
19	3/4"	M 30 x 1.5*		61.0	53.0	14.5	36	DKLL-M 30x1.5-90°-DN 19
25	1"	M 38 x 1.5*		80.0	67.5	20.0	46	DKLL-M 38x1.5-90°-DN 25
31	1 1/4"	M 45 x 1.5*		87.0	81.0	25.0	55	DKLL-M 45x1.5-90°-DN 31
38	1 1/2"	M 52 x 1.5*		104.0	100.0	31.0	60	DKLL-M 52x1.5-90°-DN 38
51	2"	M 65 x 2*		145.0	127.0	40.0	75	DKLL-M 65x2-90°-DN 51
60	2 3/8"	M 78 x 2*					90	DKLL-M 78x2-90°-DN 60
80	3"	M 100 x 2*					110	DKLL-M 100x2-90°-DN 80

* Only for 60° cone

Universal Inserts

BOOK INDEX

SECTION INDEX

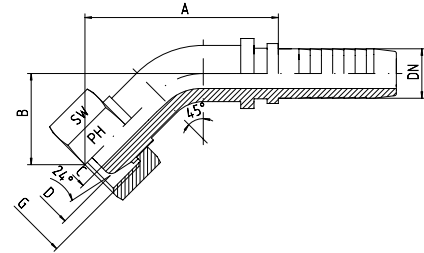
2

For Fittings with 24°- and 60°-Cone

Light Series

DKL - 45°-Elbow

DKLL - 45°-Elbow



Hose DN	Bore in.	Thread G	Tube O.D. D	Approx. Dimensions				Part code
				A	B	C	SW	
06	1/4"	M 12 x 1.5	6	37.0	14.0	4.0	14	DKL-M 12x1.5-45°-DN 06
06	1/4"	M 14 x 1.5	8	35.0	14.5	4.0	17	DKL-M 14x1.5-45°-DN 06
08	5/16"	M 14 x 1.5	8	49.5	23.0	5.5	17	DKL-M 14x1.5-45°-DN 08
06	1/4"	M 16 x 1.5	10				19	DKL-M 16x1.5-45°-DN 06
08	5/16"	M 16 x 1.5	10	43.0	17.0	5.5	19	DKL-M 16x1.5-45°-DN 08
10	3/8"	M 16 x 1.5	10	43.0	17.0	7.0	19	DKL-M 16x1.5-45°-DN 10
08	5/16"	M 18 x 1.5	12				22	DKL-M 18x1.5-45°-DN 08
10	3/8"	M 18 x 1.5	12	43.5	18.5	7.0	22	DKL-M 18x1.5-45°-DN 10
10	3/8"	M 22 x 1.5	15				27	DKL-M 22x1.5-45°-DN 10
12	1/2"	M 22 x 1.5	15	53.0	19.0	9.5	27	DKL-M 22x1.5-45°-DN 12
16	5/8"	M 26 x 1.5	18	59.0	23.0	12.5	32	DKL-M 26x1.5-45°-DN 16
19	3/4"	M 30 x 2	22	70.0	25.0	14.5	36	DKL-M 30x2-45°-DN 19
25	1"	M 36 x 2	28	90.0	32.0	20.0	41	DKL-M 36x2-45°-DN 25
31	1 1/4"	M 45 x 2	35	100.0	36.5	25.0	50	DKL-M 45x2-45°-DN 31
38	1 1/2"	M 52 x 2	42	111.0	43.5	31.0	60	DKL-M 52x2-45°-DN 38

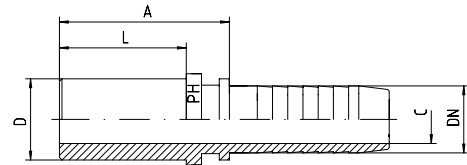
Hose DN	Bore in.	Thread G	Tube O.D. D	Approx. Dimensions				Part code
				A	B	C	SW	
19	3/4"	M 30 x 1.5*		70.0	25.0	14.5	36	DKLL-M 30x1.5-45°-DN 19
25	1"	M 38 x 1.5*		90.0	32.0	20.0	46	DKLL-M 38x1.5-45°-DN 25
31	1 1/4"	M 45 x 1.5*		100.0	36.5	25.0	55	DKLL-M 45x1.5-45°-DN 31
38	1 1/2"	M 52 x 1.5*		111.0	43.5	31.0	60	DKLL-M 52x1.5-45°-DN 38
51	2"	M 65 x 2*		147.0	52.5	40.0	75	DKLL-M 65x2-45°-DN 51
60	2 3/8"	M 78 x 2*					90	DKLL-M 78x2-45°-DN 60
80	3"	M 100 x 2*					110	DKLL-M 100x2-45°-DN 80

Standpipe Connectors

BOOK INDEX

SECTION INDEX

Light Series = BEL - Straight



2

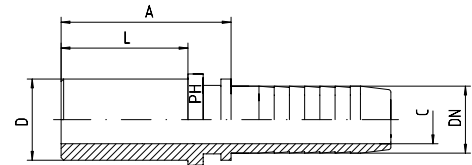
Hose DN	Bore in.	Tube O.D. D	Approx. Dimensions			Part code
			A	C	L	
05	3/16"	6	26.5	3.0	20.0	BEL-06-DN 05
06	1/4"	6	28.5	4.0	20.0	BEL-06-DN 06
05	3/16"	8	28.5	3.0	22.0	BEL-08-DN 05
06	1/4"	8	31.0	4.0	22.0	BEL-08-DN 06
08	5/16"	8	31.0	5.0	23.0	BEL-08-DN 08
08	5/16"	10	31.5	5.5	23.0	BEL-10-DN 08
10	3/8"	10	34.0	7.0	25.0	BEL-10-DN 10
10	3/8"	12	34.0	7.0	25.0	BEL-12-DN 10
12	1/2"	12	34.0	9.0	25.0	BEL-12-DN 12
10	3/8"	15	36.5	7.0	28.0	BEL-15-DN 10
12	1/2"	15	33.0	9.5	25.0	BEL-15-DN 12
12	1/2"	18	32.0	9.5	27.0	BEL-18-DN 12
16	5/8"	18	35.5	12.5	27.0	BEL-18-DN 16
16	5/8"	22	36.5	12.5	27.0	BEL-22-DN 16
19	3/4"	22	38.0	14.5	27.0	BEL-22-DN 19
25	1"	28	41.5	20.0	30.0	BEL-28-DN 25
31	1 1/4"	35	47.0	25.5	36.0	BEL-35-DN 31
38	1 1/2"	42	47.0	31.5	36.0	BEL-42-DN 38

Standpipe Connectors

BOOK INDEX

SECTION INDEX

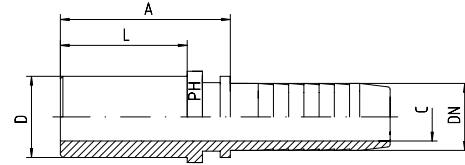
Heavy Series = BES - Straight



2

Hose DN	Bore in.	Tube O.D. D	Approx. Dimensions			Part code
			A	C	L	
05	3/16"	6	26.5	3.0	20.0	BES-06-DN 05
06	1/4"	6	28.5	4.0	20.0	BES-06-DN 06
06	1/4"	8	31.0	4.0	22.0	BES-08-DN 06
08	5/16"	8	31.0	5.0	23.0	BES-08-DN 08
06	1/4"	10	33.5	4.0	24.0	BES-10-DN 06
08	5/16"	10	31.5	5.5	23.0	BES-10-DN 08
10	3/8"	10	34.0	7.0	25.0	BES-10-DN 10
06	1/4"	12	35.5	4.0	26.0	BES-12-DN 06
08	5/16"	12	35.5	5.5	26.0	BES-12-DN 08
10	3/8"	12	34.0	7.0	25.0	BES-12-DN 10
12	1/2"	12	34.0	9.0	25.0	BES-12-DN 12
10	3/8"	14	35.5	7.0	28.0	BES-14-DN 10
12	1/2"	16	38.5	9.5	30.0	BES-16-DN 12
12	1/2"	20	42.0	9.5	36.0	BES-20-DN 12
16	5/8"	20	45.0	12.5	36.0	BES-20-DN 16
19	3/4"	20	43.0	14.5	31.0	BES-20-DN 19
19	3/4"	25	51.0	14.5	40.0	BES-25-DN 19
25	1"	25	46.0	18.0	34.5	BES-25-DN 25
25	1"	30	56.0	20.0	44.0	BES-30-DN 25
31	1 1/4"	38	62.0	25.5	50.0	BES-38-DN 31

Imperial Tube Straight



Hose DN	Bore in.	Tube O.D. D	Approx. Dimensions			Part code
			A	C	L	
06	1/4"	1/4" = 6.35 mm	31.0	4.0	22.0	BE-1/4"-DN 06
06	1/4"	3/8" = 9.52 mm	33.5	4.0	24.0	BE-3/8"-DN 06
10	3/8"	3/8" = 9.52 mm	34.0	7.0	25.0	BE-3/8"-DN 10
08	5/16"	5/16" = 7.94 mm	31.5	5.5	23.0	BE-5/16"-DN 08
10	3/8"	1/2" = 12.70 mm	39.0	7.0	30.0	BE-1/2"-DN 10
12	1/2"	1/2" = 12.70 mm	38.5	9.5	30.0	BE-1/2"-DN 12
16	5/8"	5/8" = 15.88 mm	45.0	12.5	36.0	BE-5/8"-DN 16
19	3/4"	3/4" = 19.05 mm	51.0	14.5	40.0	BE-3/4"-DN 19
25	1"	1" = 25.40 mm	56.0	20.0	44.0	BE-1"-DN 25
31	1 1/4"	1 1/4" = 31.75 mm	62.0	25.5	50.0	BE-1 1/4"-DN 31
38	1 1/2"	1 1/2" = 38.10 mm	62.0	31.5	50.0	BE-1 1/2"-DN 38

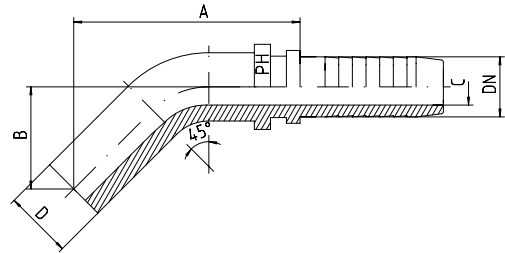
Standpipe Connectors

BOOK INDEX

SECTION INDEX

Light Series = BEL - 45°-Elbow

Heavy Series = BES - 45°-Elbow



2

Hose DN	Bore in.	Tube O.D. D	Approx. Dimensions			Part code
			A	B	C	
05	3/16"	6	50.0	22.0	3.0	BEL-06-45°-DN 05
06	1/4"	6	51.0	21.0	4.0	BEL-06-45°-DN 06
06	1/4"	8	60.0	22.0	4.0	BEL-08-45°-DN 06
06	1/4"	10	65.0	22.5	4.0	BEL-10-45°-DN 06
08	5/16"	10	64.5	25.0	5.5	BEL-10-45°-DN 08
10	3/8"	10	64.0	24.5	7.0	BEL-10-45°-DN 10
08	5/16"	12	59.0	24.0	5.5	BEL-12-45°-DN 08
10	3/8"	12	59.0	24.5	7.0	BEL-12-45°-DN 10
12	1/2"	15	69.0	27.5	9.5	BEL-15-45°-DN 12
16	5/8"	18	73.0	34.0	12.5	BEL-18-45°-DN 16
19	3/4"	22	92.0	41.5	14.5	BEL-22-45°-DN 19
25	1"	28	108.0	47.0	20.0	BEL-28-45°-DN 25
31	1 1/4"	35	144.0	68.0	25.5	BEL-35-45°-DN 31
38	1 1/2"	42	159.0	73.5	31.5	BEL-42-45°-DN 38

Hose DN	Bore in.	Tube O.D. D	Approx. Dimensions			Part code
			A	B	C	
05	3/16"	6	50.0	22.0	3.0	BES-06-45°-DN 05
06	1/4"	6	51.0	21.0	4.0	BES-06-45°-DN 06
06	1/4"	8	60.0	22.0	4.0	BES-08-45°-DN 06
06	1/4"	10	65.0	22.5	4.0	BES-10-45°-DN 06
08	5/16"	10	64.5	25.0	5.5	BES-10-45°-DN 08
10	3/8"	10	64.5	25.0	7.0	BES-10-45°-DN 10
08	5/16"	12	59.0	24.0	5.5	BES-12-45°-DN 08
10	3/8"	12	48.0	45.0	7.0	BES-12-45°-DN 10
10	3/8"	14			7.0	BES-14-45°-DN 10
12	1/2"	16	78.0	32.0	9.5	BES-16-45°-DN 12
16	5/8"	20	71.5	31.0	12.5	BES-20-45°-DN 16
19	3/4"	25	96.0	42.0	14.5	BES-25-45°-DN 19
25	1"	30			20.0	BES-30-45°-DN 25
31	1 1/4"	38			25.5	BES-38-45°-DN 31

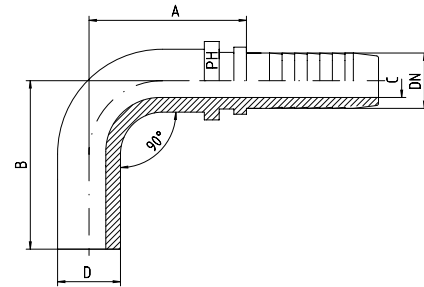
Standpipe Connectors

BOOK INDEX

SECTION INDEX

Light Series = BEL - 90°-Elbow

Heavy Series = BES - 90°-Elbow



2

Hose DN	Bore in.	Tube O.D. D	Approx. Dimensions			Part code
			A	B	C	
05	3/16"	6	28.5	36.0	3.0	BEL-06-90°-DN 05
06	1/4"	6	29.0	35.5	4.0	BEL-06-90°-DN 06
06	1/4"	8	38.5	37.0	4.0	BEL-08-90°-DN 06
06	1/4"	10	43.0	40.0	4.0	BEL-10-90°-DN 06
08	5/16"	10	41.0	41.5	5.5	BEL-10-90°-DN 08
10	3/8"	10	41.0	41.5	7.0	BEL-10-90°-DN 10
08	5/16"	12	48.0	45.0	5.5	BEL-12-90°-DN 08
10	3/8"	12	48.0	45.0	7.0	BEL-12-90°-DN 10
12	1/2"	12	46.5	46.0	8.0	BEL-12-90°-DN 12
12	1/2"	15	53.0	49.0	9.5	BEL-15-90°-DN 12
16	5/8"	18	59.0	65.0	12.5	BEL-18-90°-DN 16
19	3/4"	22	75.0	75.5	14.5	BEL-22-90°-DN 19
25	1"	28	85.0	98.0	20.0	BEL-28-90°-DN 25
31	1 1/4"	35	112.0	127.0	25.5	BEL-35-90°-DN 31
38	1 1/2"	42	135.0	135.5	31.5	BEL-42-90°-DN 38

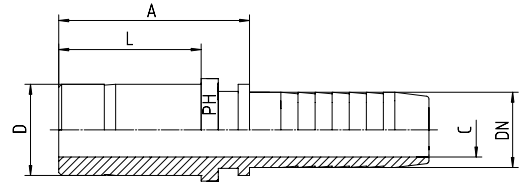
Hose DN	Bore in.	Tube O.D. D	Approx. Dimensions			Part code
			A	B	C	
05	3/16"	6	28.5	36.0	3.0	BES-06-90°-DN 05
06	1/4"	6	29.0	35.5	4.0	BES-06-90°-DN 06
06	1/4"	8	38.5	38.5	4.0	BES-08-90°-DN 06
06	1/4"	10	43.0	40.0	4.0	BES-10-90°-DN 06
08	5/16"	10	41.0	41.5	5.5	BES-10-90°-DN 08
10	3/8"	10	41.0	41.5	7.0	BES-10-90°-DN 10
08	5/16"	12	48.0	45.0	5.5	BES-12-90°-DN 08
10	3/8"	12	48.0	45.0	7.0	BES-12-90°-DN 10
10	3/8"	14			7.0	BES-14-90°-DN 10
12	1/2"	16	60.5	58.5	9.5	BES-16-90°-DN 12
16	5/8"	20	73.0	66.0	12.5	BES-20-90°-DN 16
19	3/4"	25	79.0	84.0	14.5	BES-25-90°-DN 19
25	1"	30			20.0	BES-30-90°-DN 25
31	1 1/4"	38			25.5	BES-38-90°-DN 31

Standpipe Connectors for Twin-Ferrule Fittings

BOOK INDEX

SECTION INDEX

BE - SL - Straight



2

Hose DN	Bore in.	Tube O.D. D	Approx. Dimensions			Part code
			A	C	L	
06	1/4"	6	28.0	4.0	20.0	BE-06-SL-DN 06
06	1/4"	10	33.5	4.0	25.0	BE-10-SL-DN 06
06	1/4"	1/4"	30.5	4.0	22.0	BE-1/4"-SL-DN 06
06	1/4"	3/8"	33.5	4.0	24.0	BE-3/8"-SL-DN 06
08	5/16"	12	35.0	5.5	25.0	BE-12-SL-DN 08
08	5/16"	1/2"	35.0	5.5	25.0	BE-1/2"-SL-DN 08
10	3/8"	10	33.5	7.0	25.0	BE-10-SL-DN 10
10	3/8"	12	33.5	7.0	25.0	BE-12-SL-DN 10
10	3/8"	3/8"	33.5	7.0	25.0	BE-3/8"-SL-DN 10
12	1/2"	16	36.5	9.5	27.5	BE-16-SL-DN 12
12	1/2"	1/2"	38.0	8.0	30.0	BE-1/2"-SL-DN 12
12	1/2"	5/8"	36.5	9.5	27.5	BE-5/8"-SL-DN 12
16	5/8"	16	35.0	12.5	27.0	BE-16-SL-DN 16
16	5/8"	18	35.0	12.5	27.0	BE-18-SL-DN 16
19	3/4"	3/4"	51.0	14.5	40.0	BE-3/4"-SL-DN 19
25	1"	1"	55.7	20.0	45.0	BE-1"-SL-DN 25

BSP 60° Coned Female Inserts

BOOK INDEX

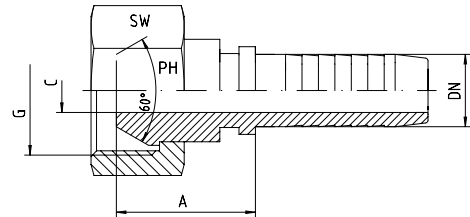
SECTION INDEX

With BSP Union Nut

For Connectors with 60°-Cone

DKR - Straight

Connection as per BS 5200



2

Hose DN	Bore in.	Thread G	Approx. Dimensions			Part code
			A	C	SW	
05	3/16"	1/8"-28	16.0	3.0	14	DKR-1/8"-DN 05
06	1/4"	1/8"-28	15.5	4.0	14	DKR-1/8"-DN 06
05	3/16"	1/4"-19	20.0	3.0	17	DKR-1/4"-DN 05
06	1/4"	1/4"-19	21.0	4.0	17	DKR-1/4"-DN 06
08	5/16"	1/4"-19	20.0	5.0	19	DKR-1/4"-DN 08
10	3/8"	1/4"-19	20.0	5.0	19	DKR-1/4"-DN 10
06	1/4"	3/8"-19	20.0	4.0	19	DKR-3/8"-DN 06
08	5/16"	3/8"-19	22.0	5.5	19	DKR-3/8"-DN 08
10	3/8"	3/8"-19	20.5	7.0	19	DKR-3/8"-DN 10
12	1/2"	3/8"-19	24.0	9.5	19	DKR-3/8"-DN 12
06	1/4"	1/2"-14	24.0	4.0	27	DKR-1/2"-DN 06
08	5/16"	1/2"-14	21.5	5.5	27	DKR-1/2"-DN 08
10	3/8"	1/2"-14	21.5	7.0	27	DKR-1/2"-DN 10
12	1/2"	1/2"-14	23.5	9.5	27	DKR-1/2"-DN 12
16	5/8"	1/2"-14	21.0	11.5	27	DKR-1/2"-DN 16
19	3/4"	1/2"-14	23.0	11.5	27	DKR-1/2"-DN 19
12	1/2"	5/8"-14	23.0	9.5	27	DKR-5/8"-DN 12
16	5/8"	5/8"-14	22.0	12.5	27	DKR-5/8"-DN 16
06	1/4"	3/4"-14	23.2	4.0	32	DKR-3/4"-DN 06
12	1/2"	3/4"-14	24.0	9.5	32	DKR-3/4"-DN 12
16	5/8"	3/4"-14	25.0	12.5	32	DKR-3/4"-DN 16
19	3/4"	3/4"-14	26.5	14.5	32	DKR-3/4"-DN 19
25	1"	3/4"-14	25.0	16.5	32	DKR-3/4"-DN 25
19	3/4"	1"-11	27.0	14.5	41	DKR-1"-DN 19
25	1"	1"-11	28.0	20.0	41	DKR-1"-DN 25
31	1 1/4"	1"-11	30.0	21.5	41	DKR-1"-DN 31
19	3/4"	1 1/4"-11	33.5	14.5	50	DKR-1 1/4"-DN 19
25	1"	1 1/4"-11	32.5	20.0	50	DKR-1 1/4"-DN 25
31	1 1/4"	1 1/4"-11	31.0	25.5	50	DKR-1 1/4"-DN 31
31	1 1/4"	1 1/2"-11	46.0	25.5	55	DKR-1 1/2"-DN 31
38	1 1/2"	1 1/2"-11	46.0	31.5	55	DKR-1 1/2"-DN 38
38	1 1/2"	2"-11	35.0	31.5	70	DKR-2"-DN 38
51	2"	2"-11	35.5	43.0	70	DKR-2"-DN 51
60	2 3/8"	2 1/2"-11	44.0	51.0	85	DKR-2 1/2"-DN 60

BSP 60° Coned Female Inserts

BOOK INDEX

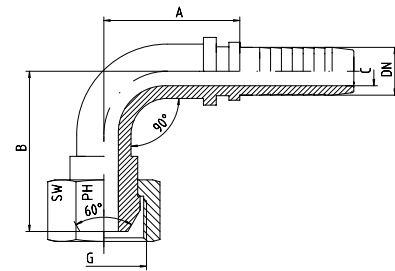
SECTION INDEX

With BSP Union Nut

For Connectors with 60°-Cone

DKR - 90°

Connection as per BS 5200



2

Hose DN	Bore in.	Thread G	Approx. Dimensions				Part code
			A	B	C	SW	
05	3/16"	1/8"-28	28.0	29.0	3.0	14	DKR-1/8"-90°-DN 05
06	1/4"	1/8"-28	28.5	30.0	4.0	14	DKR-1/8"-90°-DN 06
05	3/16"	1/4"-19	29.0	27.5	3.0	17	DKR-1/4"-90°-DN 05
06	1/4"	1/4"-19	28.5	28.0	4.0	17	DKR-1/4"-90°-DN 06
08	5/16"	1/4"-19	36.0	36.0	5.5	19	DKR-1/4"-90°-DN 08
10	3/8"	1/4"-19	34.0	39.0	6.0	19	DKR-1/4"-90°-DN 10
06	1/4"	3/8"-19	29.0	26.0	4.0	19	DKR-3/8"-90°-DN 06
08	5/16"	3/8"-19	33.0	34.0	5.5	19	DKR-3/8"-90°-DN 08
10	3/8"	3/8"-19	33.0	34.0	7.0	19	DKR-3/8"-90°-DN 10
12	1/2"	3/8"-19	44.0	47.5	9.0	22	DKR-3/8"-90°-DN 12
10	3/8"	1/2"-14	44.0	42.5	7.0	27	DKR-1/2"-90°-DN 10
12	1/2"	1/2"-14	44.0	42.5	9.5	27	DKR-1/2"-90°-DN 12
16	5/8"	1/2"-14	58.0	53.0	12.5	27	DKR-1/2"-90°-DN 16
12	1/2"	5/8"-14	44.0	50.5	9.5	27	DKR-5/8"-90°-DN 12
16	5/8"	5/8"-14	55.0	54.0	12.5	27	DKR-5/8"-90°-DN 16
12	1/2"	3/4"-14	47.5	43.0	9.5	32	DKR-3/4"-90°-DN 12
16	5/8"	3/4"-14	55.0	54.0	12.5	32	DKR-3/4"-90°-DN 16
19	3/4"	3/4"-14	61.0	54.0	14.5	32	DKR-3/4"-90°-DN 19
19	3/4"	1"-11	78.0	69.0	14.5	41	DKR-1"-90°-DN 19
25	1"	1"-11	78.0	69.0	20.0	41	DKR-1"-90°-DN 25
25	1"	1 1/4"-11	82.0	81.0	20.0	50	DKR-1 1/4"-90°-DN 25
31	1 1/4"	1 1/4"-11	87.0	81.0	25.0	50	DKR-1 1/4"-90°-DN 31
31	1 1/4"	1 1/2"-11	125.0	103.0	25.0	55	DKR-1 1/2"-90°-DN 31
38	1 1/2"	1 1/2"-11	104.0	102.0	31.0	55	DKR-1 1/2"-90°-DN 38
38	1 1/2"	2"-11	124.0	120.0	31.0	70	DKR-2"-90°-DN 38
51	2"	2"-11	142.0	133.0	40.0	70	DKR-2"-90°-DN 51

BSP 60° Coned Female Inserts

BOOK INDEX

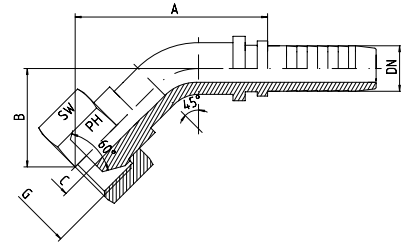
SECTION INDEX

With BSP Union Nut

For Connectors with 60°-Cone

DKR - 45°-Elbow

Connection as per BS 5200



2

Hose DN	Bore in.	Thread G	Approx. Dimensions				Part code
			A	B	C	SW	
05	3/16"	1/8"-28	37.0	16.0	3.0	14	DKR-1/8"-45°-DN 05
06	1/4"	1/8"-28	39.0	16.0	4.0	14	DKR-1/8"-45°-DN 06
05	3/16"	1/4"-19			3.0	17	DKR-1/4"-45°-DN 05
06	1/4"	1/4"-19	36.5	14.5	4.0	17	DKR-1/4"-45°-DN 06
08	5/16"	1/4"-19	47.0	20.0	5.5	19	DKR-1/4"-45°-DN 08
10	3/8"	1/4"-19	44.0	22.5	6.0	19	DKR-1/4"-45°-DN 10
06	1/4"	3/8"-19	34.0	16.0	4.0	19	DKR-3/8"-45°-DN 06
08	5/16"	3/8"-19	40.0	15.0	5.5	19	DKR-3/8"-45°-DN 08
10	3/8"	3/8"-19	40.0	15.0	7.0	19	DKR-3/8"-45°-DN 10
12	1/2"	3/8"-19	58.5	25.5	9.0	22	DKR-3/8"-45°-DN 12
10	3/8"	1/2"-14	54.0	20.5	7.0	27	DKR-1/2"-45°-DN 10
12	1/2"	1/2"-14	54.0	20.5	9.5	27	DKR-1/2"-45°-DN 12
16	5/8"	1/2"-14	64.0	27.0	12.5	27	DKR-1/2"-45°-DN 16
12	1/2"	5/8"-14	64.5	29.0	9.5	27	DKR-5/8"-45°-DN 12
16	5/8"	5/8"-14	68.0	28.0	12.5	27	DKR-5/8"-45°-DN 16
12	1/2"	3/4"-14	60.0	23.0	9.0	32	DKR-3/4"-45°-DN 12
16	5/8"	3/4"-14	62.5	28.0	12.5	32	DKR-3/4"-45°-DN 16
19	3/4"	3/4"-14	70.0	30.0	14.5	32	DKR-3/4"-45°-DN 19
19	3/4"	1"-11	77.0	26.0	14.5	41	DKR-1"-45°-DN 19
25	1"	1"-11	95.0	39.5	20.0	41	DKR-1"-45°-DN 25
25	1"	1 1/4"-11	94.0	40.0	20.0	50	DKR-1 1/4"-45°-DN 25
31	1 1/4"	1 1/4"-11	100.0	40.0	25.0	50	DKR-1 1/4"-45°-DN 31
31	1 1/4"	1 1/2"-11	145.0	53.0	25.0	55	DKR-1 1/2"-45°-DN 31
38	1 1/2"	1 1/2"-11	115.0	55.0	31.0	55	DKR-1 1/2"-45°-DN 38
38	1 1/2"	2"-11	143.0	60.0	31.0	70	DKR-2"-45°-DN 38
51	2"	2"-11	149.0	57.0	40.0	70	DKR-2"-45°-DN 51

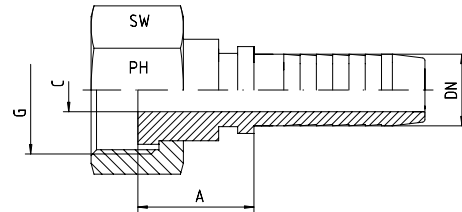
BSP Flat-faced Inserts

BOOK INDEX

SECTION INDEX

With BSP Union Nut

DRF - Straight



2

Hose DN	Bore in.	Thread G	Approx. Dimensions			Part code
			A	C	SW	
05	3/16"	1/8"-28	13.5	3.0	14	DRF-1/8"-DN 05
06	1/4"	1/8"-28	13.5	4.0	14	DRF-1/8"-DN 06
05	3/16"	1/4"-19	14.5	3.0	17	DRF-1/4"-DN 05
06	1/4"	1/4"-19	16.5	4.0	17	DRF-1/4"-DN 06
08	5/16"	1/4"-19	16.5	5.0	17	DRF-1/4"-DN 08
10	3/8"	1/4"-19	17.0	4.0	19	DRF-1/4"-DN 10
06	1/4"	3/8"-19	17.0	4.0	19	DRF-3/8"-DN 06
08	5/16"	3/8"-19	17.5	5.5	19	DRF-3/8"-DN 08
10	3/8"	3/8"-19	17.5	7.0	19	DRF-3/8"-DN 10
12	1/2"	3/8"-19	20.5	8.0	19	DRF-3/8"-DN 12
06	1/4"	1/2"-14	20.5	4.0	27	DRF-1/2"-DN 06
08	5/16"	1/2"-14	16.5	5.5	27	DRF-1/2"-DN 08
10	3/8"	1/2"-14	16.5	7.0	27	DRF-1/2"-DN 10
12	1/2"	1/2"-14	19.5	9.5	27	DRF-1/2"-DN 12
16	5/8"	1/2"-14	16.5	11.5	27	DRF-1/2"-DN 16
19	3/4"	1/2"-14	19.0	11.5	27	DRF-1/2"-DN 19
12	1/2"	5/8"-14	20.0	9.5	27	DRF-5/8"-DN 12
16	5/8"	5/8"-14	19.0	12.5	27	DRF-5/8"-DN 16
12	1/2"	3/4"-14	19.5	9.5	32	DRF-3/4"-DN 12
16	5/8"	3/4"-14	20.0	12.5	32	DRF-3/4"-DN 16
19	3/4"	3/4"-14	21.5	14.5	32	DRF-3/4"-DN 19
19	3/4"	1"-11	22.0	14.5	41	DRF-1"-DN 19
25	1"	1"-11	23.5	20.0	41	DRF-1"-DN 25
19	3/4"	1 1/4"-11		14.5	50	DRF-1 1/4"-DN 19
25	1"	1 1/4"-11	26.0	20.0	50	DRF-1 1/4"-DN 25
31	1 1/4"	1 1/4"-11	23.5	25.5	50	DRF-1 1/4"-DN 31
31	1 1/4"	1 1/2"-11	41.0	25.5	55	DRF-1 1/2"-DN 31
38	1 1/2"	1 1/2"-11	41.0	31.5	55	DRF-1 1/2"-DN 38
51	2"	2"-11	28.0	43.0	70	DRF-2"-DN 51
60	2 3/8"	2 1/2"-11				DRF-2 1/2"-DN 60

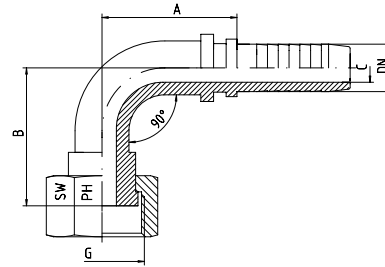
BSP Flat-faced Inserts

BOOK INDEX

SECTION INDEX

2

DRF - 90°-Elbow



Hose DN	Bore in.	Thread G	Approx. Dimensions				Part code
			A	B	C	SW	
06	1/4"	1/8"-28	31.0	17.0	4.0	14	DRF-1/8"-90°-DN 06
06	1/4"	1/4"-19	28.5	25.0	4.0	17	DRF-1/4"-90°-DN 06
08	5/16"	1/4"-19	34.0	36.0	5.5	19	DRF-1/4"-90°-DN 08
08	5/16"	3/8"-19	33.0	30.0	5.5	19	DRF-3/8"-90°-DN 08
10	3/8"	3/8"-19	33.0	30.0	7.0	19	DRF-3/8"-90°-DN 10
10	3/8"	1/2"-14	41.5	36.0	7.0	27	DRF-1/2"-90°-DN 10
12	1/2"	1/2"-14	44.0	36.5	9.5	27	DRF-1/2"-90°-DN 12
12	1/2"	5/8"-14	44.5	47.5	9.5	27	DRF-5/8"-90°-DN 12
16	5/8"	5/8"-14	54.5	50.0	12.0	27	DRF-5/8"-90°-DN 16
12	1/2"	3/4"-14	55.0	47.0	9.5	32	DRF-3/4"-90°-DN 12
16	5/8"	3/4"-14	54.0	20.5	9.5	32	DRF-3/4"-90°-DN 16
19	3/4"	3/4"-14	61.0	50.0	14.5	32	DRF-3/4"-90°-DN 19
19	3/4"	1"-11	71.0	51.0	14.5	41	DRF-1"-90°-DN 19
25	1"	1"-11	78.0	64.5	20.0	41	DRF-1"-90°-DN 25
25	1"	1 1/4"-11	82.0	76.0	20.0	50	DRF-1 1/4"-90°-DN 25
31	1 1/4"	1 1/4"-11	87.0	74.5	25.0	50	DRF-1 1/4"-90°-DN 31
31	1 1/4"	1 1/2"-11	125.0	98.0	25.0	55	DRF-1 1/2"-90°-DN 31
38	1 1/2"	1 1/2"-11	104.0	95.0	31.0	55	DRF-1 1/2"-90°-DN 38
51	2"	2"-11	142.0	119.0	40.0	70	DRF-2"-90°-DN 51

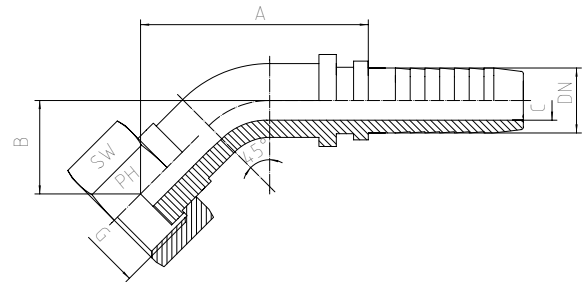
BSP Flat-faced Inserts

BOOK INDEX

SECTION INDEX

With BSP Union Nut

DRF - 45°-Elbow



2

Hose DN	Bore in.	Thread G	Approx. Dimensions				Part code
			A	B	C	SW	
06	1/4"	1/8"-28			4.0	14	DRF-1/8"-45°-DN06
06	1/4"	1/4"-19			4.0	17	DRF-1/4"-45°-DN06
08	5/16"	1/4"-19			5.5	19	DRF-1/4"-45°-DN08
08	5/16"	3/8"-19			5.5	19	DRF-3/8"-45°-DN08
10	3/8"	3/8"-19			7.0	19	DRF-3/8"-45°-DN10
10	3/8"	1/2"-14			7.0	27	DRF-1/2"-45°-DN10
12	1/2"	1/2"-14	52.0	20.5	9.5	27	DRF-1/2"-45°-DN12
12	1/2"	5/8"-14			9.5	27	DRF-5/8"-45°-DN12
16	5/8"	5/8"-14			12.0	27	DRF-5/8"-45°-DN16
12	1/2"	3/4"-14			9.5	32	DRF-3/4"-45°-DN12
16	5/8"	3/4"-14			9.5	32	DRF-3/4"-45°-DN16
19	3/4"	3/4"-14	64.5	27.5	14.5	32	DRF-3/4"-45°-DN19
19	3/4"	1"-11			14.5	41	DRF-1"-45°-DN19
25	1"	1"-11	91.0	31.5	20.0	41	DRF-1"-45°-DN25
25	1"	1 1/4"-11			20.0	50.0	DRF-1 1/4"-45°-DN25
31	1 1/4"	1 1/4"-11	97.0	34.0	25.0	50.0	DRF-1 1/4"-45°-DN31
31	1 1/4"	1 1/2"-11			25.0	55.0	DRF-1 1/2"-45°-DN31
38	1 1/2"	1 1/2"-11			31.0	55.0	DRF-1 1/2"-45°-DN38
51	2"	2"-11			40.0	70.0	DRF-2"-45°-DN 51

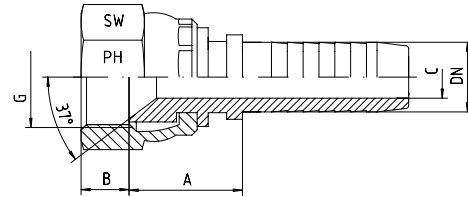
JIC 37° Female Inserts

BOOK INDEX

SECTION INDEX

2

37° JIC Straight Female



Hose DN	Bore in.	Thread G = UNF/UN	Approx. Dimensions				Part code
			A	B	C	SW	
05	3/16"	7/16"-20	16.2	7.5	3.0	17	DKJ-7/16"-DN 05
06	1/4"	7/16"-20	16.2	7.5	4.0	17	DKJ-7/16"-DN 06
10	3/8"	7/16"-20	17.5	7.5	7.0	17	DKJ-7/16"-DN 10
05	3/16"	1/2"-20	16.2	9.5	3.0	17	DKJ-1/2"-DN 05
06	1/4"	1/2"-20	16.0	9.5	4.0	17	DKJ-1/2"-DN 06
08	5/16"	1/2"-20	19.0	8.5	5.5	17	DKJ-1/2"-DN 08
05	3/16"	9/16"-18	18.0	9.5	3.0	19	DKJ-9/16"-DN 05
06	1/4"	9/16"-18	18.5	8.5	4.0	19	DKJ-9/16"-DN 06
08	5/16"	9/16"-18	16.5	10.0	5.5	19	DKJ-9/16"-DN 08
10	3/8"	9/16"-18	19.0	8.5	7.0	19	DKJ-9/16"-DN 10
12	1/2"	9/16"-18	18.0	8.5	7.5	19	DKJ-9/16"-DN 12
06	1/4"	3/4"-16	21.0	10.0	4.0	24	DKJ-3/4"-DN 06
08	5/16"	3/4"-16	19.0	10.0	5.5	24	DKJ-3/4"-DN 08
10	3/8"	3/4"-16	19.0	10.0	7.0	24	DKJ-3/4"-DN 10
12	1/2"	3/4"-16	20.0	10.0	9.5	24	DKJ-3/4"-DN 12
16	5/8"	3/4"-16	20.0	11.5	9.5	24	DKJ-3/4"-DN 16
19	3/4"	3/4"-16	23.0	11.0	10.0	24	DKJ-3/4"-DN 19
10	3/8"	7/8"-14	23.5	12.5	7.0	27	DKJ-7/8"-DN 10
12	1/2"	7/8"-14	20.0	11.5	9.5	27	DKJ-7/8"-DN 12
16	5/8"	7/8"-14	21.0	11.5	12.5	27	DKJ-7/8"-DN 16
19	3/4"	7/8"-14	23.0	12.5	12.5	27	DKJ-7/8"-DN 19
12	1/2"	1 1/16"-12	22.0	15.0	9.5	32	DKJ-1 1/16"-DN 12
16	5/8"	1 1/16"-12	24.0	14.0	12.5	32	DKJ-1 1/16"-DN 16
19	3/4"	1 1/16"-12	22.0	15.0	14.5	32	DKJ-1 1/16"-DN 19
25	1"	1 1/16"-12	23.0	14.5	20.0	32	DKJ-1 1/16"-DN 25
16	5/8"	1 5/16"-12	26.5	14.5	12.5	41	DKJ-1 5/16"-DN 16
19	3/4"	1 5/16"-12	29.5	14.0	14.5	41	DKJ-1 5/16"-DN 19
25	1"	1 5/16"-12	28.0	14.0	20.0	41	DKJ-1 5/16"-DN 25
31	1 1/4"	1 5/16"-12	28.0	14.0	19.0	41	DKJ-1 5/16"-DN 31
25	1"	1 5/8"-12	32.5	15.5	20.0	50	DKJ-1 5/8"-DN 25
31	1 1/4"	1 5/8"-12	27.5	15.5	25.5	50	DKJ-1 5/8"-DN 31
31	1 1/4"	1 7/8"-12	31.5	20.0	25.5	55	DKJ-1 7/8"-DN 31
38	1 1/2"	1 7/8"-12	36.5	18.5	31.5	55	DKJ-1 7/8"-DN 38
38	1 1/2"	2 1/2"-12	43.0	25.0	31.5	70	DKJ-2 1/2"-DN 38
51	2"	2 1/2"-12	45.5	25.0	43.0	70	DKJ-2 1/2"-DN 51

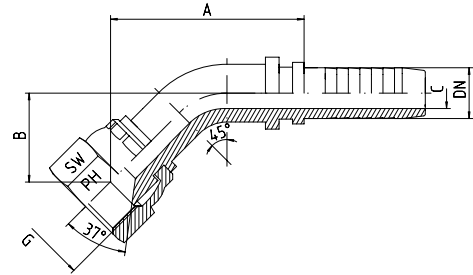
JIC 37° Female Inserts

BOOK INDEX

SECTION INDEX

2

37° JIC 45° Female



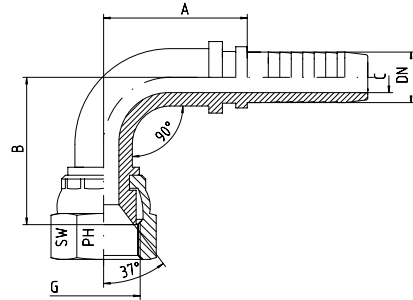
Hose DN	Bore in.	Thread G = UNF/UN	Approx. Dimensions				Part code
			A	B	C	SW	
05	3/16"	7/16"-20			3.0	17	DKJ-7/16"-45°-DN 05
06	1/4"	7/16"-20	38.0	16.5	4.0	17	DKJ-7/16"-45°-DN 06
05	3/16"	1/2"-20			3.0	17	DKJ-1/2"-45°-DN 05
06	1/4"	1/2"-20	36.0	15.5	4.0	17	DKJ-1/2"-45°-DN 06
08	5/16"	1/2"-20	38.5	17.0	5.5	17	DKJ-1/2"-45°-DN 08
05	3/16"	9/16"-18			3.0	19	DKJ-9/16"-45°-DN 05
06	1/4"	9/16"-18	34.5	14.5	4.0	19	DKJ-9/16"-45°-DN 06
08	5/16"	9/16"-18	44.5	20.0	5.5	19	DKJ-9/16"-45°-DN 08
10	3/8"	9/16"-18	47.0	20.0	7.0	19	DKJ-9/16"-45°-DN 10
10	3/8"	3/4"-16	42.0	18.5	7.0	24	DKJ-3/4"-45°-DN 10
12	1/2"	3/4"-16	57.0	22.5	9.5	24	DKJ-3/4"-45°-DN 12
10	3/8"	7/8"-14	50.5	20.0	7.0	27	DKJ-7/8"-45°-DN 10
12	1/2"	7/8"-14	59.0	22.0	9.5	27	DKJ-7/8"-45°-DN 12
16	5/8"	7/8"-14	66.0	27.0	12.5	27	DKJ-7/8"-45°-DN 16
12	1/2"	1 1/16"-12	66.0	33.0	9.5	32	DKJ-1 1/16"-45°-DN 12
16	5/8"	1 1/16"-12	67.0	26.5	12.5	32	DKJ-1 1/16"-45°-DN 16
19	3/4"	1 1/16"-12	67.5	33.0	14.5	32	DKJ-1 1/16"-45°-DN 19
19	3/4"	1 5/16"-12	82.0	32.5	14.5	41	DKJ-1 5/16"-45°-DN 19
25	1"	1 5/16"-12	97.0	38.0	20.0	41	DKJ-1 5/16"-45°-DN 25
25	1"	1 5/8"-12	123.0	50.5	20.0	50	DKJ-1 5/8"-45°-DN 25
31	1 1/4"	1 5/8"-12	103.0	37.0	25.0	50	DKJ-1 5/8"-45°-DN 31
31	1 1/4"	1 7/8"-12	144.0	49.0	25.0	55	DKJ-1 7/8"-45°-DN 31
38	1 1/2"	1 7/8"-12	115.5	49.0	31.5	55	DKJ-1 7/8"-45°-DN 38
38	1 1/2"	2 1/2"-12	143.0	64.0	31.5	70	DKJ-2 1/2"-45°-DN 38
51	2"	2 1/2"-12	170.0	75.0	42.0	70	DKJ-2 1/2"-45°-DN 51

JIC 37° Female Inserts

BOOK INDEX

SECTION INDEX

37° JIC 90° Female



2

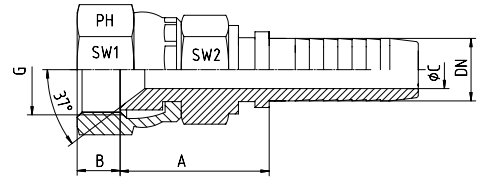
Hose DN	Bore in.	Thread G = UNF/UN	Approx. Dimensions				Part code
			A	B	C	SW	
05	3/16"	7/16"-20	29.0	29.0	3.0	17	DKJ-7/16"-90°-DN 05
06	1/4"	7/16"-20	27.5	31.0	4.0	17	DKJ-7/16"-90°-DN 06
05	3/16"	1/2"-20	29.0	29.0	3.0	17	DKJ-1/2"-90°-DN 05
06	1/4"	1/2"-20	27.5	31.0	4.0	17	DKJ-1/2"-90°-DN 06
08	5/16"	1/2"-20	26.0	32.0	5.5	17	DKJ-1/2"-90°-DN 08
05	3/16"	9/16"-18	29.0	27.0	3.0	19	DKJ-9/16"-90°-DN 05
06	1/4"	9/16"-18	27.5	26.0	4.0	19	DKJ-9/16"-90°-DN 06
08	5/16"	9/16"-18	35.5	36.0	5.5	19	DKJ-9/16"-90°-DN 08
10	3/8"	9/16"-18	36.0	35.0	7.0	19	DKJ-9/16"-90°-DN 10
10	3/8"	3/4"-16	36.0	30.5	7.0	22	DKJ-3/4"-90°-DN 10
12	1/2"	3/4"-16	43.0	45.0	9.5	24	DKJ-3/4"-90°-DN 12
10	3/8"	7/8"-14	42.5	38.0	7.0	27	DKJ-7/8"-90°-DN 10
12	1/2"	7/8"-14	43.0	46.5	9.5	27	DKJ-7/8"-90°-DN 12
16	5/8"	7/8"-14	56.5	55.5	12.5	27	DKJ-7/8"-90°-DN 16
12	1/2"	1 1/16"-12	45.5	60.5	9.5	32	DKJ-1 1/16"-90°-DN 12
16	5/8"	1 1/16"-12	58.0	51.5	12.5	32	DKJ-1 1/16"-90°-DN 16
19	3/4"	1 1/16"-12	58.5	61.5	14.5	32	DKJ-1 1/16"-90°-DN 19
19	3/4"	1 5/16"-12	68.0	66.0	14.5	41	DKJ-1 5/16"-90°-DN 19
25	1"	1 5/16"-12	80.0	73.5	20.0	41	DKJ-1 5/16"-90°-DN 25
25	1"	1 5/8"-12	105.0	94.5	20.0	50	DKJ-1 5/8"-90°-DN 25
31	1 1/4"	1 5/8"-12	101.0	94.0	25.0	50	DKJ-1 5/8"-90°-DN 31
31	1 1/4"	1 7/8"-12	127.0	95.0	25.0	55	DKJ-1 7/8"-90°-DN 31
38	1 1/2"	1 7/8"-12	104.5	103.0	31.5	55	DKJ-1 7/8"-90°-DN 38
38	1 1/2"	2 1/2"-12	121.0	123.0	31.5	70	DKJ-2 1/2"-90°-DN 38
51	2"	2 1/2"-12	149.0	150.0	42.0	70	DKJ-2 1/2"-90°-DN 51

JIC - 37° - Female Nipples with Double Hexagon

BOOK INDEX

SECTION INDEX

37° JIC Straight Female with hexagonal body



2

Hose DN	Bore in.	Thread G = UNF/UN	Approx. Dimensions					Part code	
			A	B	C	SW1	SW2		
06	1/4"	7/16"-20	22.5	7.5	4.0	17	12	DKJ-7/16"-DN 06-HEX	
10	3/8"	9/16"-18	23.5	9.5	7.0	19	17	DKJ-9/16"-DN 10-HEX	
12	1/2"	3/4"-16	26.0	10.5	9.5	24	19	DKJ-3/4"-DN 12-HEX	
16	5/8"	1 1/16"-12	31.0	15.0	12.5	32	27	DKJ-1 1/16"-DN 16-HEX	
19	3/4"	1 1/16"-12	34.0	15.0	14.5	32	27	DKJ-1 1/16"-DN 19-HEX	
25	1"	1 5/16"-12	38.0	14.0	20.0	41	32	DKJ-1 5/16"-DN 25-HEX	
31	1 1/4"	1 5/8"-12	36.0	15.5	25.5	50	41	DKJ-1 5/8"-DN 31-HEX	
38	1 1/2"	1 7/8"-12	42.0	18.5	31.5	55	46	DKJ-1 7/8"-DN 38-HEX	
51	2"	2 1/2"-12	52.0	25.0	43.0	70	65	DKJ-2 1/2"-DN 51-HEX	

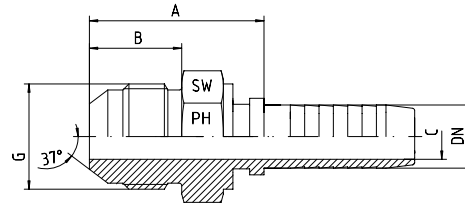
JIC 37° Male Inserts

BOOK INDEX

SECTION INDEX

2

37° JIC male



Hose DN	Bore in.	Thread G = UNF/UN	Approx. Dimensions				Part code
			A	B	C	SW	
05	3/16"	7/16"-20	21.0	14.0	3.0	12	AGJ-7/16"-DN 05
06	1/4"	7/16"-20	27.5	14.0	4.0	14	AGJ-7/16"-DN 06
05	3/16"	1/2"-20	21.0	14.0	3.0	14	AGJ-1/2"-DN 05
06	1/4"	1/2"-20	27.5	14.0	4.0	17	AGJ-1/2"-DN 06
08	5/16"	1/2"-20	27.5	14.0	5.5	17	AGJ-1/2"-DN 08
05	3/16"	9/16"-18	22.0	14.1	3.0	17	AGJ-9/16"-DN 05
06	1/4"	9/16"-18	29.5	14.1	4.0	17	AGJ-9/16"-DN 06
08	5/16"	9/16"-18	29.5	14.1	5.5	17	AGJ-9/16"-DN 08
10	3/8"	9/16"-18	29.5	14.1	7.0	17	AGJ-9/16"-DN 10
10	3/8"	3/4"-16	33.0	16.7	7.0	22	AGJ-3/4"-DN 10
12	1/2"	3/4"-16	31.0	16.7	9.5	22	AGJ-3/4"-DN 12
10	3/8"	7/8"-14	36.0	19.3	7.0	24	AGJ-7/8"-DN 10
12	1/2"	7/8"-14	36.5	19.3	9.5	24	AGJ-7/8"-DN 12
16	5/8"	7/8"-14	37.0	19.3	12.5	24	AGJ-7/8"-DN 16
12	1/2"	1 1/16"-12	38.5	22.0	9.5	27	AGJ-1 1/16"-DN 12
16	5/8"	1 1/16"-12	40.0	22.0	12.5	27	AGJ-1 1/16"-DN 16
19	3/4"	1 1/16"-12	43.0	22.0	14.5	27	AGJ-1 1/16"-DN 19
19	3/4"	1 5/16"-12	44.0	23.1	14.5	36	AGJ-1 5/16"-DN 19
25	1"	1 5/16"-12	44.0	23.1	20.0	36	AGJ-1 5/16"-DN 25
25	1"	1 5/8"-12	50.0	24.4	20.0	46	AGJ-1 5/8"-DN 25
31	1 1/4"	1 5/8"-12	48.0	24.4	25.5	46	AGJ-1 5/8"-DN 31
31	1 1/4"	1 7/8"-12	51.0	27.5	25.5	50	AGJ-1 7/8"-DN 31
38	1 1/2"	1 7/8"-12	53.5	27.5	31.5	50	AGJ-1 7/8"-DN 38
38	1 1/2"	2 1/2"-12	62.0	33.9	31.5	65	AGJ-2 1/2"-DN 38
51	2"	2 1/2"-12	63.0	33.9	43.0	65	AGJ-2 1/2"-DN 51

DIN Compression 24° Male Inserts

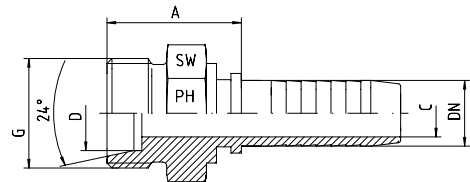
BOOK INDEX

SECTION INDEX

DIN compression male

DIN 2353 / DIN EN ISO 8434-1 with 24°-Cone

Light Series = CEL



2

Hose DN	Bore in.	Thread G	Tube O.D. D	Approx. Dimensions			Part code
				A	C	SW	
05	3/16"	M 12 x 1.5	6	21.5	3.0	14	CEL-06-DN 05
06	1/4"	M 12 x 1.5	6	23.0	4.0	14	CEL-06-DN 06
05	3/16"	M 14 x 1.5	8	21.5	3.0	14	CEL-08-DN 05
06	1/4"	M 14 x 1.5	8	23.0	4.0	14	CEL-08-DN 06
06	1/4"	M 16 x 1.5	10	25.0	4.0	17	CEL-10-DN 06
08	5/16"	M 16 x 1.5	10	24.5	5.5	17	CEL-10-DN 08
10	3/8"	M 16 x 1.5	10	24.5	7.0	17	CEL-10-DN 10
06	1/4"	M 18 x 1.5	12	24.5	4.0	19	CEL-12-DN 06
08	5/16"	M 18 x 1.5	12	24.5	5.5	19	CEL-12-DN 08
10	3/8"	M 18 x 1.5	12	24.5	7.0	19	CEL-12-DN 10
12	1/2"	M 18 x 1.5	12	25.5	9.5	19	CEL-12-DN 12
10	3/8"	M 22 x 1.5	15	26.0	7.0	22	CEL-15-DN 10
12	1/2"	M 22 x 1.5	15	27.0	9.5	22	CEL-15-DN 12
12	1/2"	M 26 x 1.5	18	29.0	9.5	27	CEL-18-DN 12
16	5/8"	M 26 x 1.5	18	28.0	12.5	27	CEL-18-DN 16
19	3/4"	M 26 x 1.5	18	30.0	14.5	27	CEL-18-DN 19
16	5/8"	M 30 x 2	22	32.5	12.5	30	CEL-22-DN 16
19	3/4"	M 30 x 2	22	35.0	14.5	30	CEL-22-DN 19
19	3/4"	M 36 x 2	28	34.0	19.5	36	CEL-28-DN 19
25	1"	M 36 x 2	28	35.0	20.0	36	CEL-28-DN 25
31	1 1/4"	M 45 x 2	35	39.0	25.5	46	CEL-35-DN 31
38	1 1/2"	M 52 x 2	42	45.0	31.5	55	CEL-42-DN 38

DIN Compression 24° Male Inserts

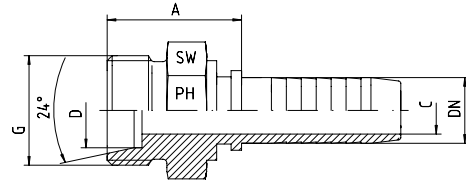
BOOK INDEX

SECTION INDEX

DIN compression male

DIN 2353 / DIN EN ISO 8434-1
with 24°-Cone

Heavy Series = CES



2

Hose DN	Bore in.	Thread G	Tube O.D. D	Approx. Dimensions			Part code
				A	C	SW	
05	3/16"	M 14 x 1.5	6	23.7	3.0	14	CES-06-DN 05
06	1/4"	M 14 x 1.5	6	25.0	4.0	14	CES-06-DN 06
05	3/16"	M 16 x 1.5	8	23.7	3.0	17	CES-08-DN 05
06	1/4"	M 16 x 1.5	8	25.5	4.0	17	CES-08-DN 06
06	1/4"	M 18 x 1.5	10	25.5	4.0	19	CES-10-DN 06
08	5/16"	M 18 x 1.5	10	25.5	5.5	19	CES-10-DN 08
10	3/8"	M 18 x 1.5	10	25.5	7.0	19	CES-10-DN 10
08	5/16"	M 20 x 1.5	12	27.5	5.5	22	CES-12-DN 08
10	3/8"	M 20 x 1.5	12	25.5	7.0	22	CES-12-DN 10
08	5/16"	M 22 x 1.5	14	27.5	5.5	22	CES-14-DN 08
10	3/8"	M 22 x 1.5	14	28.0	7.0	22	CES-14-DN 10
10	3/8"	M 24 x 1.5	16	28.0	7.0	24	CES-16-DN 10
12	1/2"	M 24 x 1.5	16	28.0	9.5	24	CES-16-DN 12
12	1/2"	M 30 x 2	20	33.0	9.5	30	CES-20-DN 12
16	5/8"	M 30 x 2	20	34.0	12.5	30	CES-20-DN 16
19	3/4"	M 30 x 2	20	37.0	14.5	30	CES-20-DN 19
19	3/4"	M 36 x 2	25	40.0	14.5	36	CES-25-DN 19
25	1"	M 36 x 2	25	40.0	20.0	36	CES-25-DN 25
25	1"	M 42 x 2	30	42.5	20.0	46	CES-30-DN 25
31	1 1/4"	M 52 x 2	38	45.0	25.5	55	CES-38-DN 31

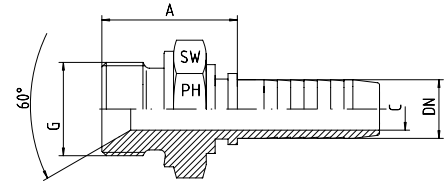
BSP 60° Coned Male Insert

BOOK INDEX

SECTION INDEX

**With 60°-Cone and Sealing
Shoulder Form B**

Thread: BSP - Parallel



2

Hose DN	Bore in.	Thread G	Approx. Dimensions			Part code
			A	C	SW	
05	3/16"	1/8"-28	21.5	3.0	14	AGR-1/8"-DN 05
06	1/4"	1/8"-28	23.5	4.0	14	AGR-1/8"-DN 06
05	3/16"	1/4"-19	25.0	3.0	19	AGR-1/4"-DN 05
06	1/4"	1/4"-19	25.5	4.0	19	AGR-1/4"-DN 06
08	5/16"	1/4"-19	28.0	5.5	19	AGR-1/4"-DN 08
10	3/8"	1/4"-19	28.0	6.0	19	AGR-1/4"-DN 10
12	1/2"	1/4"-19	27.0	7.0	19	AGR-1/4"-DN 12
06	1/4"	3/8"-19	30.5	4.0	19	AGR-3/8"-DN 06
08	5/16"	3/8"-19	26.5	5.5	22	AGR-3/8"-DN 08
10	3/8"	3/8"-19	30.0	7.0	22	AGR-3/8"-DN 10
12	1/2"	3/8"-19	30.5	9.5	22	AGR-3/8"-DN 12
06	1/4"	1/2"-14	34.5	4.0	27	AGR-1/2"-DN 06
08	5/16"	1/2"-14	31.5	5.5	27	AGR-1/2"-DN 08
10	3/8"	1/2"-14	32.0	7.0	27	AGR-1/2"-DN 10
12	1/2"	1/2"-14	31.0	9.5	27	AGR-1/2"-DN 12
16	5/8"	1/2"-14	32.0	12.5	27	AGR-1/2"-DN 16
19	3/4"	1/2"-14	37.5	14.5	27	AGR-1/2"-DN 19
16	5/8"	5/8"-14	32.5	12.5	30	AGR-5/8"-DN 16
12	1/2"	3/4"-14	34.5	9.5	32	AGR-3/4"-DN 12
16	5/8"	3/4"-14	35.0	12.5	32	AGR-3/4"-DN 16
19	3/4"	3/4"-14	38.0	14.5	32	AGR-3/4"-DN 19
25	1"	3/4"-14	38.0	19.5	36	AGR-3/4"-DN 25
19	3/4"	1"-11	41.5	14.5	41	AGR-1"-DN 19
25	1"	1"-11	42.0	20.0	41	AGR-1"-DN 25
25	1"	1 1/4"-11	45.0	20.0	50	AGR-1 1/4"-DN 25
31	1 1/4"	1 1/4"-11	45.0	25.5	50	AGR-1 1/4"-DN 31
31	1 1/4"	1 1/2"-11	45.0	25.5	55	AGR-1 1/2"-DN 31
38	1 1/2"	1 1/2"-11	48.0	31.5	55	AGR-1 1/2"-DN 38
51	2"	2"-11	50.0	41.0	70	AGR-2"-DN 51

BSPF Flat-faced Male inserts

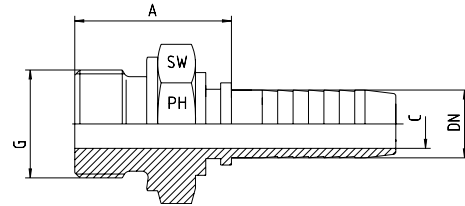
BOOK INDEX

SECTION INDEX

Flat sealing

With Sealing Shoulder
Form B

Thread: BSP - Parallel



2

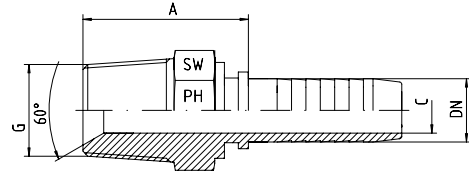
Hose DN	Bore in.	Thread G	Approx. Dimensions			Part code
			A	C	SW	
06	1/4"	1/8"-28	23.5	4.0	14	AGF-1/8"-DN 06
06	1/4"	1/4"-19	25.5	4.0	19	AGF-1/4"-DN 06
08	5/16"	1/4"-19	28.0	5.5	19	AGF-1/4"-DN 08
10	3/8"	1/4"-19	28.0	6.0	19	AGF-1/4"-DN 10
12	1/2"	1/4"-19	27.0	7.0	19	AGF-1/4"-DN 12
08	5/16"	3/8"-19	26.5	5.5	22	AGF-3/8"-DN 08
10	3/8"	3/8"-19	30.0	7.0	22	AGF-3/8"-DN 10
12	1/2"	3/8"-19	32.0	9.5	22	AGF-3/8"-DN 12
10	1/2"	1/2"-14	32.0	7.0	27	AGF-1/2"-DN 10
12	1/2"	1/2"-14	31.0	9.5	27	AGF-1/2"-DN 12
16	5/8"	5/8"-14	32.0	12.5	27	AGF-5/8"-DN 16
12	1/2"	3/4"-14	34.5	9.5	32	AGF-3/4"-DN 12
16	5/8"	3/4"-14	35.0	12.5	32	AGF-3/4"-DN 16
19	3/4"	3/4"-14	38.0	14.5	32	AGF-3/4"-DN 19
19	3/4"	1"-11	41.5	14.5	41	AGF-1"-DN 19
25	1"	1"-11	42.0	20.0	41	AGF-1"-DN 25
25	1"	1 1/4"-11	45.0	20.0	50	AGF-1 1/4"-DN 25
31	1 1/4"	1 1/4"-11	45.0	25.5	50	AGF-1 1/4"-DN 31
31	1 1/4"	1 1/2"-11	45.0	25.5	55	AGF-1 1/2"-DN 31
38	1 1/2"	1 1/2"-11	48.0	31.5	55	AGF-1 1/2"-DN 38
51	2"	2"-11	50.0	43.0	70	AGF-2"-DN 51

BSP Taper Male Inserts

BOOK INDEX

SECTION INDEX

AGRk = BSP - Male - Taper



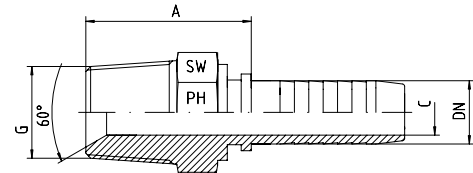
Hose DN	Bore in.	Thread G	Approx. Dimensions			Part code
			A	C	SW	
05	3/16"	1/8"-28	19.5	3.0	11	AGRk-1/8"-DN 05
06	1/4"	1/8"-28	20.0	4.0	14	AGRk-1/8"-DN 06
05	3/16"	1/4"-19	23.5	3.0	14	AGRk-1/4"-DN 05
06	1/4"	1/4"-19	28.0	4.0	14	AGRk-1/4"-DN 06
08	5/16"	1/4"-19	27.0	5.5	14	AGRk-1/4"-DN 08
10	3/8"	1/4"-19	26.5	7.0	17	AGRk-1/4"-DN 10
06	1/4"	3/8"-19	25.5	4.0	19	AGRk-3/8"-DN 06
08	5/16"	3/8"-19	26.5	5.5	19	AGRk-3/8"-DN 08
10	3/8"	3/8"-19	26.5	7.0	19	AGRk-3/8"-DN 10
12	1/2"	3/8"-19	27.5	9.5	19	AGRk-3/8"-DN 12
10	3/8"	1/2"-14	27.5	7.0	22	AGRk-1/2"-DN 10
12	1/2"	1/2"-14	29.0	9.5	22	AGRk-1/2"-DN 12
19	3/4"	1/2"-14		14.5	27	AGRk-1/2"-DN 19
12	1/2"	3/4"-14	33.5	9.5	27	AGRk-3/4"-DN 12
16	5/8"	3/4"-14	36.5	12.5	27	AGRk-3/4"-DN 16
19	3/4"	3/4"-14	38.5	14.5	27	AGRk-3/4"-DN 19
25	1"	3/4"-14	35.7	14.5	32	AGRk-3/4"-DN 25
19	3/4"	1"-11	46.5	14.5	36	AGRk-1"-DN 19
25	1"	1"-11	46.5	20.0	36	AGRk-1"-DN 25
31	1 1/4"	1 1/4"-11	45.0	25.5	46	AGRk-1 1/4"-DN 31
38	1 1/2"	1 1/2"-11	50.0	31.5	50	AGRk-1 1/2"-DN 38
51	2"	2"-11	56.0	43.0	65	AGRk-2"-DN 51

NPT Male Inserts

BOOK INDEX

SECTION INDEX

AGN = NPT - Male



2

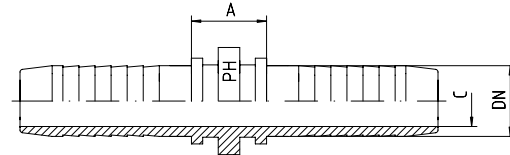
Hose DN	Bore in.	Thread G	Approx. Dimensions			Part code
			A	C	SW	
05	3/16"	1/8"-27 NPT	21.0	3.0	11	AGN-1/8"-DN 05
06	1/4"	1/8"-27 NPT	23.5	4.0	14	AGN-1/8"-DN 06
05	3/16"	1/4"-18 NPT	26.5	3.0	14	AGN-1/4"-DN 05
06	1/4"	1/4"-18 NPT	28.0	4.0	14	AGN-1/4"-DN 06
08	5/16"	1/4"-18 NPT	29.5	5.5	14	AGN-1/4"-DN 08
10	3/8"	1/4"-18 NPT	29.0	7.0	17	AGN-1/4"-DN 10
06	1/4"	3/8"-18 NPT	29.0	4.0	19	AGN-3/8"-DN 06
08	5/16"	3/8"-18 NPT	28.5	5.5	19	AGN-3/8"-DN 08
10	3/8"	3/8"-18 NPT	29.5	7.0	19	AGN-3/8"-DN 10
12	1/2"	3/8"-18 NPT	31.5	9.5	19	AGN-3/8"-DN 12
10	3/8"	1/2"-14 NPT	33.5	7.0	22	AGN-1/2"-DN 10
12	1/2"	1/2"-14 NPT	34.0	9.5	22	AGN-1/2"-DN 12
16	5/8"	1/2"-14 NPT	35.5	12.5	24	AGN-1/2"-DN 16
19	3/4"	1/2"-14 NPT	40.0	14.5	27	AGN-1/2"-DN 19
12	1/2"	3/4"-14 NPT	35.5	9.5	27	AGN-3/4"-DN 12
16	5/8"	3/4"-14 NPT	36.5	12.5	27	AGN-3/4"-DN 16
19	3/4"	3/4"-14 NPT	38.5	14.5	27	AGN-3/4"-DN 19
25	1"	3/4"-14 NPT	40.0	15.0	32	AGN-3/4"-DN 25
19	3/4"	1"-11.5 NPT	43.5	14.5	36	AGN-1"-DN 19
25	1"	1"-11.5 NPT	46.5	20.0	36	AGN-1"-DN 25
25	1"	1 1/4"-11.5 NPT	46.0	20.0	46	AGN-1 1/4"-DN 25
31	1 1/4"	1 1/4"-11.5 NPT	48.0	25.5	46	AGN-1 1/4"-DN 31
31	1 1/4"	1 1/2"-11.5 NPT	44.0	25.5	50	AGN-1 1/2"-DN 31
38	1 1/2"	1 1/2"-11.5 NPT	54.5	31.5	50	AGN-1 1/2"-DN 38
51	2"	2"-11.5 NPT	56.0	43.0	65	AGN-2"-DN 51

Hose Mender

BOOK INDEX

SECTION INDEX

For effecting repairs to damaged hoses.



2

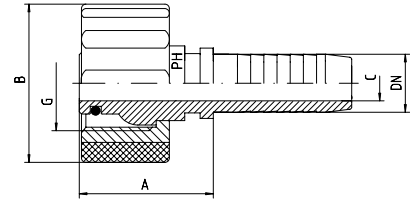
Hose DN	Bore in.	Approx. Dimensions		Part code
		A	C	
06	1/4"	23.0	4.0	DSN-DN 06
08	5/16"	23.0	5.5	DSN-DN 08
10	3/8"	19.0	7.0	DSN-DN 10
12	1/2"	23.0	9.5	DSN-DN 12
16	5/8"	25.5	12.5	DSN-DN 16
19	3/4"	31.5	14.5	DSN-DN 19
25	1"	32.5	20.0	DSN-DN 25
31	1 1/4"	39.0	25.5	DSN-DN 31
38	1 1/2"	41.0	31.5	DSN-DN 38
51	2"	41.0	43.0	DSN-DN 51

Waterwash Inserts

BOOK INDEX

SECTION INDEX

For hoses used with pressure washers and lances.



2

Hose DN	Bore in.	Thread G	Approx. Dimensions			Part code
			A	B	C	
06	1/4"	M 22 x 1.5	34	35	4.0	DKO-KÄ-DN 06
08	5/16"	M 22 x 1.5	34	35	5.5	DKO-KÄ-DN 08
10	3/8"	M 22 x 1.5	34	35	7.0	DKO-KÄ-DN 10
12	1/2"	M 22 x 1.5	34	35	9.5	DKO-KÄ-DN 12

SAE Flanged Inserts

BOOK INDEX

SECTION INDEX

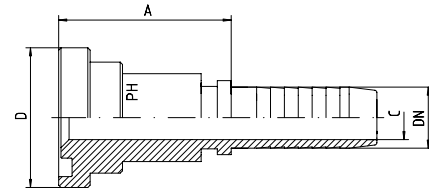
2

Straight

SAE J518 / ISO 6162

SFL3 = 3000 psi ("Code 61")

SFS6 = 6000 psi ("Code 62")



Hose DN	Bore in.	Flange Dimensions		Approx. Dimensions		Part code
		D	in.	A	C	
12	1/2"	30.2	1/2"	37.5	9.5	SFL3-1/2"-DN 12
16	5/8"	30.2	1/2"	39.0	12.5	SFL3-1/2"-DN 16
12	1/2"	38.1	3/4"	40.0	9.5	SFL3-3/4"-DN 12
16	5/8"	38.1	3/4"	46.5	12.5	SFL3-3/4"-DN 16
19	3/4"	38.1	3/4"	46.5	14.5	SFL3-3/4"-DN 19
19	3/4"	44.5	1"	46.5	14.5	SFL3-1"-DN 19
25	1"	44.5	1"	38.0	20.0	SFL3-1"-DN 25
25	1"	50.8	1 1/4"	49.0	20.0	SFL3-1 1/4"-DN 25
31	1 1/4"	50.8	1 1/4"	54.0	25.5	SFL3-1 1/4"-DN 31
31	1 1/4"	60.3	1 1/2"	50.0	25.5	SFL3-1 1/2"-DN 31
38	1 1/2"	60.3	1 1/2"	60.0	31.5	SFL3-1 1/2"-DN 38
38	1 1/2"	71.4	2"	62.0	31.5	SFL3-2"-DN 38
51	2"	71.4	2"	48.0	43.0	SFL3-2"-DN 51
60	2 3/8"	84.1	2 1/2"	68.0	51.0	SFL3-2 1/2"-DN 60
63	2 1/2"	84.1	2 1/2"	68.0	55.5	SFL3-2 1/2"-DN 63
51	2"	101.5	3"	64.0	43.0	SFL3-3"-DN 51
76	3"	101.5	3"	87.0	68.5	SFL3-3"-DN 76
80		101.5	3"	71.0	73.0	SFL3-3"-DN 80

Hose DN	Bore in.	Flange Dimensions		Approx. Dimensions		Part code
		D	in.	A	C	
12	1/2"	31.7	1/2"	39.0	9.5	SFS6-1/2"-DN 12
16	5/8"	31.7	1/2"	40.0	12.5	SFS6-1/2"-DN 16
12	1/2"	41.3	3/4"	40.0	9.5	SFS6-3/4"-DN 12
16	5/8"	41.3	3/4"	41.0	12.5	SFS6-3/4"-DN 16
19	3/4"	41.3	3/4"	48.0	14.5	SFS6-3/4"-DN 19
19	3/4"	47.6	1"	65.5	14.5	SFS6-1"-DN 19
25	1"	47.6	1"	68.0	20.0	SFS6-1"-DN 25
25	1"	54.0	1 1/4"	50.5	20.0	SFS6-1 1/4"-DN 25
31	1 1/4"	54.0	1 1/4"	70.0	25.5	SFS6-1 1/4"-DN 31
31	1 1/4"	63.5	1 1/2"	58.0	25.5	SFS6-1 1/2"-DN 31
38	1 1/2"	63.5	1 1/2"	68.0	31.5	SFS6-1 1/2"-DN 38
38	1 1/2"	79.4	2"	76.0	31.5	SFS6-2"-DN 38
51	2"	79.4	2"	86.0	43.0	SFS6-2"-DN 51

SAE Flanged Inserts

BOOK INDEX

SECTION INDEX

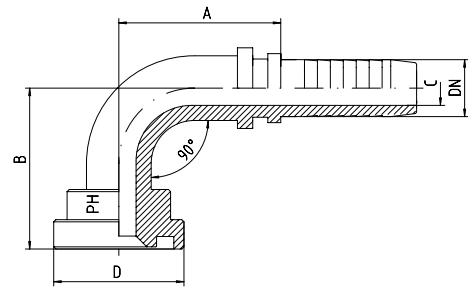
2

90°

SAE J518 / ISO 6162

SFL3 = 3000 psi ("Code 61")

SFS6 = 6000 psi ("Code 62")



Hose DN	Bore in.	Flange Dimensions		Approx. Dimensions			Part code
		D	in.	A	B	C	
12	1/2"	30.2	1/2"	44.0	54.0	9.5	SFL3-1/2"-90°-DN 12
16	5/8"	30.2	1/2"	76.5	60.0	12.0	SFL3-1/2"-90°-DN 16
12	1/2"	38.1	3/4"	74.0	61.0	12.0	SFL3-3/4"-90°-DN 12
16	5/8"	38.1	3/4"	74.0	61.0	12.0	SFL3-3/4"-90°-DN 16
19	3/4"	38.1	3/4"	75.0	68.0	14.5	SFL3-3/4"-90°-DN 19
19	3/4"	44.5	1"	75.0	73.0	14.5	SFL3-1"-90°-DN 19
25	1"	44.5	1"	85.0	77.0	20.0	SFL3-1"-90°-DN 25
25	1"	50.8	1 1/4"	104.0	89.0	20.0	SFL3-1 1/4"-90°-DN 25
31	1 1/4"	50.8	1 1/4"	102.0	92.0	25.0	SFL3-1 1/4"-90°-DN 31
38	1 1/2"	50.8	1 1/4"	121.0	101.0	31.0	SFL3-1 1/4"-90°-DN 38
31	1 1/4"	60.3	1 1/2"	124.0	92.5	25.0	SFL3-1 1/2"-90°-DN 31
38	1 1/2"	60.3	1 1/2"	118.0	106.0	31.0	SFL3-1 1/2"-90°-DN 38
38	1 1/2"	71.4	2"	120.0	120.0	31.0	SFL3-2"-90°-DN 38
51	2"	71.4	2"	146.0	144.0	42.0	SFL3-2"-90°-DN 51
60	2 3/8"	84.1	2 1/2"				SFL3-2 1/2"-90°-DN 60
63	2 1/2"	84.1	2 1/2"	213.0	183.0	55.0	SFL3-2 1/2"-90°-DN 63
76	3"	101.5	3"				SFL3-3"-90°-DN 76
80		101.5	3"				SFL3-3"-90°-DN 80

Hose DN	Bore in.	Flange Dimensions		Approx. Dimensions			Part code
		D	in.	A	B	C	
12	1/2"	31.7	1/2"	44.0	56.0	9.5	SFS6-1/2"-90°-DN 12
16	5/8"	31.7	1/2"	56.5	60.0	12.0	SFS6-1/2"-90°-DN 16
12	1/2"	41.3	3/4"	74.0	63.5	12.0	SFS6-3/4"-90°-DN 12
16	5/8"	41.3	3/4"	74.0	63.5	12.0	SFS6-3/4"-90°-DN 16
19	3/4"	41.3	3/4"	75.0	70.0	14.5	SFS6-3/4"-90°-DN 19
19	3/4"	47.6	1"	77.0	72.0	14.5	SFS6-1"-90°-DN 19
25	1"	47.6	1"	84.0	78.0	20.0	SFS6-1"-90°-DN 25
25	1"	54.0	1 1/4"	105.0	91.0	20.0	SFS6-1 1/4"-90°-DN 25
31	1 1/4"	54.0	1 1/4"	103.0	92.0	25.0	SFS6-1 1/4"-90°-DN 31
31	1 1/4"	63.5	1 1/2"	124.0	95.0	25.0	SFS6-1 1/2"-90°-DN 31
38	1 1/2"	63.5	1 1/2"	124.0	104.0	31.0	SFS6-1 1/2"-90°-DN 38
38	1 1/2"	79.4	2"	120.0	122.0	31.0	SFS6-2"-90°-DN 38
51	2"	79.4	2"	147.0	139.0	41.0	SFS6-2"-90°-DN 51

SAE Flanged Inserts

BOOK INDEX

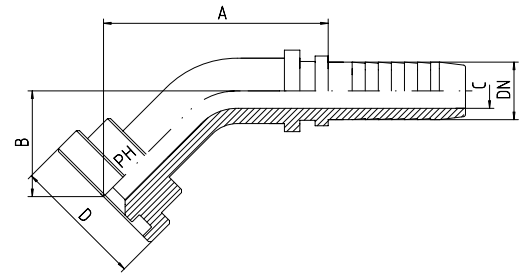
SECTION INDEX

45°

SAE J518 / ISO 6162

SFL3 = 3000 psi ("Code 61")

SFS6 = 6000 psi ("Code 62")



2

Hose DN	Bore in.	Flange Dimensions		Approx. Dimensions			Part code
		D	in.	A	B	C	
12	1/2"	30.2	1/2"	60.0	30.0	9.5	SFL3-1/2"-45°-DN 12
16	5/8"	30.2	1/2"	90.5	34.0	12.0	SFL3-1/2"-45°-DN 16
12	1/2"	38.1	3/4"	90.5	34.0	12.0	SFL3-3/4"-45°-DN 12
16	5/8"	38.1	3/4"	90.5	34.0	12.0	SFL3-3/4"-45°-DN 16
19	3/4"	38.1	3/4"	85.0	36.0	14.5	SFL3-3/4"-45°-DN 19
19	3/4"	44.5	1"	91.0	31.0	14.5	SFL3-1"-45°-DN 19
25	1"	44.5	1"	90.0	39.0	20.0	SFL3-1"-45°-DN 25
25	1"	50.8	1 1/4"	118.0	43.0	20.0	SFL3-1 1/4"-45°-DN 25
31	1 1/4"	50.8	1 1/4"	111.0	44.0	25.0	SFL3-1 1/4"-45°-DN 31
31	1 1/4"	60.3	1 1/2"	138.0	36.0	25.0	SFL3-1 1/2"-45°-DN 31
38	1 1/2"	60.3	1 1/2"	134.0	45.0	31.0	SFL3-1 1/2"-45°-DN 38
38	1 1/2"	71.4	2"	142.0	58.0	31.0	SFL3-2"-45°-DN 38
51	2"	71.4	2"	162.0	57.0	42.0	SFL3-2"-45°-DN 51
60	2 3/8"	84.1	2 1/2"				SFL3-2 1/2"-45°-DN 60
63	2 1/2"	84.1	2 1/2"	223.0	73.5	55.0	SFL3-2 1/2"-45°-DN 63
76	3"	101.5	3"				SFL3-3"-45°-DN 76
80		101.5	3"				SFL3-3"-45°-DN 80

Hose DN	Bore in.	Flange Dimensions		Approx. Dimensions			Part code
		D	in.	A	B	C	
12	1/2"	31.7	1/2"	62.0	32.0	9.5	SFS6-1/2"-45°-DN 12
16	5/8"	31.7	1/2"	91.5	35.0	12.0	SFS6-1/2"-45°-DN 16
12	1/2"	41.3	3/4"	91.5	35.0	12.0	SFS6-3/4"-45°-DN 12
16	5/8"	41.3	3/4"	91.5	35.0	12.0	SFS6-3/4"-45°-DN 16
19	3/4"	41.3	3/4"	85.0	40.0	14.5	SFS6-3/4"-45°-DN 19
19	3/4"	47.6	1"	94.0	31.0	14.5	SFS6-1"-45°-DN 19
25	1"	47.6	1"	92.5	38.5	20.0	SFS6-1"-45°-DN 25
25	1"	54.0	1 1/4"	119.0	47.5	20.0	SFS6-1 1/4"-45°-DN 25
31	1 1/4"	54.0	1 1/4"	112.0	47.0	25.0	SFS6-1 1/4"-45°-DN 31
31	1 1/4"	63.5	1 1/2"	141.5	43.0	25.0	SFS6-1 1/2"-45°-DN 31
38	1 1/2"	63.5	1 1/2"	134.0	48.0	31.0	SFS6-1 1/2"-45°-DN 38
38	1 1/2"	79.4	2"	143.0	64.0	31.0	SFS6-2"-45°-DN 38
51	2"	79.4	2"	165.5	60.0	41.0	SFS6-2"-45°-DN 51

Banjo Bolts

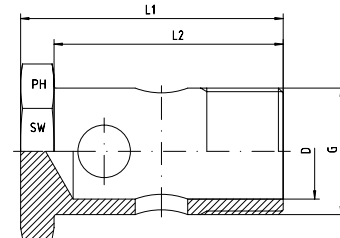
BOOK INDEX

SECTION INDEX

Metric (DIN 7643) + BSP

HS-M (x) = metric thread

HS-G (x) = BSPP thread



2

Thread G	Approx. Dimensions					Part code
	L1	L2	D	SW		
M 10 x 1	25	19	5.5	14		HS-M 10x1
M 12 x 1.5	30	24	7.0	17		HS-M 12x1.5
M 14 x 1.5	32	26	9.0	19		HS-M 14x1.5
M 16 x 1.5	34	28	11.0	22		HS-M 16x1.5
M 18 x 1.5	38	32	13.0	24		HS-M 18x1.5
M 22 x 1.5	46	39	16.0	27		HS-M 22x1.5
M 26 x 1.5	52	45	20.0	32		HS-M 26x1.5
G 1/8"	25	19	5.5	14		HS-G 1/8"
G 1/4"	32	26	8.0	19		HS-G 1/4"
G 3/8"	34	28	11.0	22		HS-G 3/8"
G 1/2"	45	38	13.0	27		HS-G 1/2"
G 3/4"	52	45	20.0	32		HS-G 3/4"

Capillary Banjos

BOOK INDEX

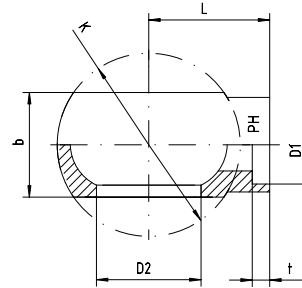
SECTION INDEX

DIN 7642

For Soldering, Form B

For metric parallel and BSPP bolts

p. 2.51



2

Tube O.D. D1	For Bolt D2	Approx. Dimensions				Part code
		b	L	t	K	
6	M 10 x 1 + 1/8"	10	16	6	17	RGN-06
8	M 12 x 1.5	12	18	6	20	RGN-08
10	M 14 x 1.5	14	20	6	24	RGN-10
12	M 16 x 1.5 + 3/8"	16	22	6	28	RGN-12
15	M 18 x 1.5	20	24	6	32	RGN-15
18	M 22 x 1.5	25	27	6	39	RGN-18
22	M 26 x 1.5 + 3/4"	30	32	8	46	RGN-22

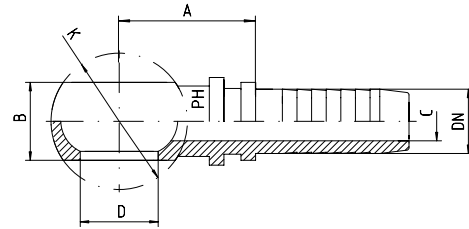
Banjo Inserts

BOOK INDEX

SECTION INDEX

For metric parallel
and BSPP bolts

p. 2.51



2

Hose DN	Bore in.	For bolt thread type	Approx. Dimensions				Part code
			D	A	B	C	
06	1/4"	M 10 x 1 + G 1/8"	10.1	33.0	10	4.0	RGN-10-DN 06
06	1/4"	M 12 x 1.5	12.1	36.0	12	4.0	RGN-12-DN 06
06	1/4"	M 14 x 1.5	14.1	27.5	14	4.0	RGN-14-DN 06
06	1/4"	G 1/4"	13.3	27.5	14	4.0	RGN-1/4" -DN 06
06	1/4"	M 16 x 1.5 + G 3/8"	16.6	35.5	16	4.0	RGN-16-DN 06
08	5/16"	M 10 x 1 + G 1/8"	10.1	33.0	10	5.5	RGN-10-DN 08
08	5/16"	M 12 x 1.5	12.1	36.0	12	5.5	RGN-12-DN 08
08	5/16"	M 14 x 1.5	14.1	27.5	14	5.5	RGN-14-DN 08
08	5/16"	M 16 x 1.5 + G 3/8"	16.6	35.5	16	5.5	RGN-16-DN 08
10	3/8"	M 14 x 1.5	14.1	37.5	14	7.0	RGN-14-DN 10
10	3/8"	M 16 x 1.5 + G 3/8"	16.6	35.5	16	7.0	RGN-16-DN 10
10	3/8"	M 18 x 1.5	18.1	40.5	20	7.0	RGN-18-DN 10
10	3/8"	G 1/2"	21.2	45.5	22	7.0	RGN-1/2" -DN 10
12	1/2"	G 1/2"	21.2	46.5	22	9.5	RGN-1/2" -DN 12
12	1/2"	M 16 x 1.5 + G 3/8"	16.6	36.0	16	9.5	RGN-16-DN 12
12	1/2"	M 18 x 1.5	18.1	38.0	20	9.5	RGN-18-DN 12
12	1/2"	M 22 x 1.5	22.1	47.0	25	9.5	RGN-22-DN 12
16	5/8"	M 22 x 1.5	22.1	47.5	25	12.5	RGN-22-DN 16
19	3/4"	M 26 x 1.5 + G 3/4"	26.3	53.0	30	14.5	RGN-26-DN 19

Please note that **some** bodies can coincidentally be used with both metric and BSPP bolts

SAE Flange Clamp

BOOK INDEX

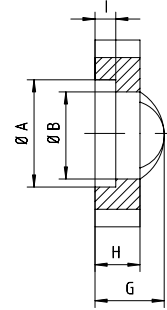
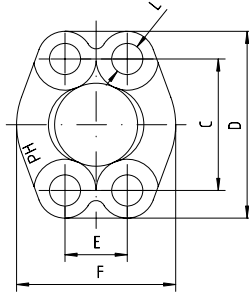
SECTION INDEX

SAE full flange clamps

3000 psi - Code 61

6000 psi - Code 62

According to SAE J518 and ISO 6162-1 (Code 61) or -2 (Code 62).



3000 psi - Code 61

Max. Working Pressure bar	Nominal Flange Size in	Approx. Dimension										Screws		Part code
		A	B	C	D	E	F	G	H	I	L	metr.	unc.	
345	1/2"	30.96	24.26	38.10	54	17.48	45.6	19	13	6.22	8.50	M 8 x 25	5/16" x 1 1/4"	VF-3-1/2"
345	3/4"	38.89	32.13	47.63	65	22.23	51.8	22	14	6.22	10.50	M 10 x 30	3/8" x 1 1/4"	VF-3-3/4"
345	1"	45.24	38.48	52.37	70	26.19	58.4	24	16	7.49	10.50	M 10 x 35	3/8" x 1 1/4"	VF-3-1"
276	1 1/4"	51.59	43.69	58.72	79	30.18	72.6	22	16	7.49	12.00	M 10 x 35	7/16" x 1 1/2"	VF-3-1 1/4"
207	1 1/2"	61.09	50.80	69.85	94	35.71	82.2	25	16	7.49	13.50	M 12 x 35	1/2" x 1 1/2"	VF-3-1 1/2"
207	2"	72.24	62.74	77.77	102	42.88	96.4	26	16	9.02	13.50	M 12 x 35	1/2" x 1 1/2"	VF-3-2"
172	2 1/2"	84.94	74.93	88.90	114	50.80	108.2	38	19	9.02	13.50	M 12 x 35	1/2" x 1 1/2"	VF-3-2 1/2"
138	3"	102.39	90.93	106.38	135	61.93	130.6	41	22	9.02	16.75	M 16 x 50	5/8" x 2"	VF-3-3"

6000 psi - Code 62

Max. Working Pressure bar	Nominal Flange Size in	Approx. Dimension										Screws		Part code
		A	B	C	D	E	F	G	H	I	L	metr.	unc.	
420	1/2"	32.45	24.64	40.49	56	18.24	47.2	22	16	7.24	8.50	M 8 x 30	5/16" x 1 1/4"	VF-6-1/2"
420	3/4"	42.06	32.51	50.80	71	23.80	60.0	28	19	8.26	10.50	M 10 x 35	3/8" x 1 1/2"	VF-6-3/4"
420	1"	48.41	38.86	57.15	81	27.76	69.9	33	24	9.02	12.50	M 12 x 45		VF-6-1"
420	1 1/4"	54.76	44.45	66.68	95	31.75	77.2	38	27	9.78	14.50	M 14 x 50	1/2" x 1 3/4"	VF-6-1 1/4"
420	1 1/2"	64.29	51.56	79.38	113	36.50	95.0	43	30	12.07	16.75	M 16 x 55	5/8" x 2"	VF-6-1 1/2"
420	2"	80.16	67.56	96.82	133	44.45	113.8	52	37	12.07	21.00	M 20 x 65	3/4" x 2 1/2"	VF-6-2"

SAE Split Flange Halves

BOOK INDEX

SECTION INDEX

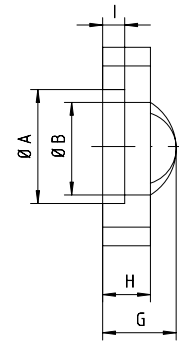
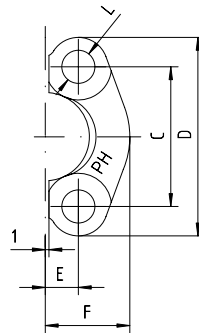
2

SAE split flange clamps

3000 psi - Code 61

6000 psi - Code 62

According to SAE J518 and ISO 6162-1 (Code 61) or -2 (Code 62).



3000 psi - Code 61

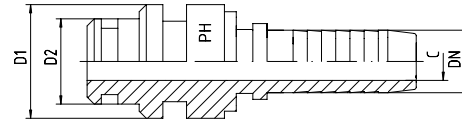
Max. Working Pressure bar	Nominal Flange Size in	Approx. Dimension										Screws		Part code
		A	B	C	D	E	F	G	H	I	L	metr.	unc.	
345	1/2"	30.96	24.26	38.10	54	8.74	22.8	19	13	6.22	8.50	M 8 x 25	5/16" x 1 1/4"	FLH-3-1/2"
345	3/4"	38.89	32.13	47.63	65	11.13	25.9	22	14	6.22	10.50	M 10 x 30	3/8" x 1 1/4"	FLH-3-3/4"
345	1"	45.24	38.48	52.37	70	13.08	29.2	24	16	7.49	10.50	M 10 x 30	3/8" x 1 1/4"	FLH-3-1"
276	1 1/4"	51.59	43.69	58.72	79	15.09	36.3	22	16	7.49	12.00	M 10 x 35	7/16" x 1 1/2"	FLH-3-1 1/4"
207	1 1/2"	61.09	50.80	69.85	94	17.86	41.1	25	16	7.49	13.50	M 12 x 35	1/2" x 1 1/2"	FLH-3-1 1/2"
207	2"	72.24	62.74	77.77	102	21.44	48.2	26	16	9.02	13.50	M 12 x 35	1/2" x 1 1/2"	FLH-3-2"
172	2 1/2"	84.94	74.93	88.90	114	25.40	54.1	38	19	9.02	13.50	M 12 x 40	1/2" x 1 1/2"	FLH-3-2 1/2"
138	3"	102.39	90.93	106.38	135	30.96	65.3	41	22	9.02	16.75	M 16 x 45	5/8" x 2"	FLH-3-3"

6000 psi - Code 62

Max. Working Pressure bar	Nominal Flange Size in	Approx. Dimension										Screws		Part code
		A	B	C	D	E	F	G	H	I	L	metr.	unc.	
420	1/2"	32.45	24.64	40.49	56	9.12	23.6	22	16	7.24	8.50	M 8 x 30	5/16" x 1 1/4"	FLH-6-1/2"
420	3/4"	42.06	32.51	50.80	71	11.91	30.0	28	19	8.26	10.50	M 10 x 35	3/8" x 1 1/2"	FLH-6-3/4"
420	1"	48.41	38.86	57.15	81	13.89	34.8	33	24	9.02	12.50	M 12 x 45		FLH-6-1"
420	1 1/4"	54.76	44.45	66.68	95	15.88	38.6	38	27	9.78	14.50	M 14 x 50		FLH-6-1 1/4"
420	1 1/2"	64.29	51.56	79.38	113	18.26	47.5	43	30	12.07	16.75	M 16 x 55	5/8" x 2"	FLH-6-1 1/2"
420	2"	80.16	67.56	96.82	133	22.23	56.9	52	37	12.07	21.00	M 20 x 65	3/4" x 2 1/2"	FLH-6-2"

Thread	Part code
M 8 x 25	MS-8x25
M 8 x 30	MS-8x30
M 10 x 30	MS-10x30
M 10 x 35	MS-10x35
M 12 x 35	MS-12x35
M 12 x 40	MS-12x40
M 12 x 45	MS-12x45
M 14 x 50	MS-14x50
M 16 x 45	MS-16x45
M 16 x 55	MS-16x55
M 20 x 65	MS-20x65

Torsion-free



Hose DN	Bore in.	Approx. Dimensions			Part code
		D1	D2	C	
06	1/4"	15	10	4.0	STN-15-DN 06
10	3/8"	20	14	7.0	STN-20-DN 10
12	1/2"	24	18	9.5	STN-24-DN 12
16	5/8"	26	21	12.5	STN-26-DN 16
19	3/4"	29	24	14.5	STN-29-DN 19
25	1"	39	31	20.0	STN-39-DN 25

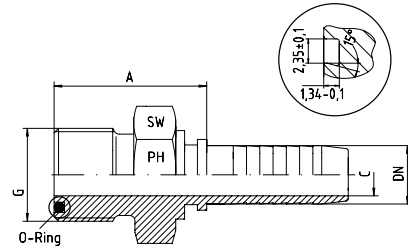
ORFS Male Inserts

BOOK INDEX

SECTION INDEX

ORFS male

Supplied with
NBR O-ring



2

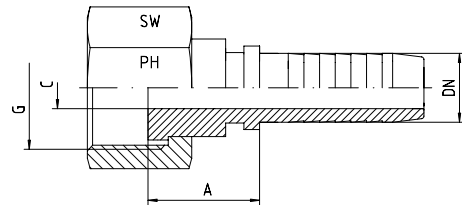
Hose DN	Bore in.	Thread G	Approx. Dimensions			O-ring	Part code
			A	C	SW		
06	1/4"	9/16"-18	24.0	4.0	17	7.65 x 1.78	MORFS-9/16"-DN 06
10	3/8"	11/16"-16	26.0	6.5	19	9.25 x 1.78	MORFS-11/16"-DN 10
12	1/2"	13/16"-16	28.0	9.5	22	12.42 x 1.78	MORFS-13/16"-DN 12
16	5/8"	1"-14	34.5	12.5	27	15.60 x 1.78	MORFS-1"-DN 16
19	3/4"	1. 3/16"-12	38.0	14.5	32	18.77 x 1.78	MORFS-1. 3/16"-DN 19
25	1"	1. 7/16"-12	39.7	20.0	41	23.52 x 1.78	MORFS-1. 7/16"-DN 25
31	1 1/4"	1. 11/16"-12	42.5	25.5	46	29.87 x 1.78	MORFS-1. 11/16"-DN 31
38	1 1/2"	2"-12	46.5	31.5	55	37.82 x 1.78	MORFS-2"-DN 38

ORFS Female Inserts

BOOK INDEX

SECTION INDEX

ORFS straight female
with female nut



2

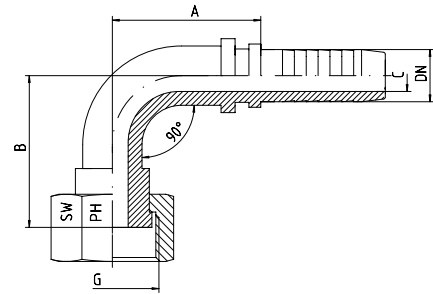
Hose DN	Bore in.	Thread G	Approx. Dimensions			Part code
			A	C	SW	
06	1/4"	9/16"-18	27.0	4.0	19	FORFS-9/16"-DN 06
06	1/4"	11/16"-16	27.0	4.0	22	FORFS-11/16"-DN 06
08	5/16"	11/16"-16	29.5	5.5	22	FORFS-11/16"-DN 08
10	3/8"	11/16"-16	29.5	7.0	22	FORFS-11/16"-DN 10
10	3/8"	13/16"-16	29.5	7.0	24	FORFS-13/16"-DN 10
12	1/2"	13/16"-16	29.5	9.5	24	FORFS-13/16"-DN 12
12	1/2"	1"-14	34.5	9.5	30	FORFS-1"-DN 12
16	5/8"	1"-14	34.0	12.5	30	FORFS-1"-DN 16
19	3/4"	1"-14	36.0	11.5	30	FORFS-1"-DN 19
12	1/2"	1. 3/16"-12	35.0	9.5	36	FORFS-1. 3/16"-DN 12
16	5/8"	1. 3/16"-12	33.0	12.5	36	FORFS-1. 3/16"-DN 16
19	3/4"	1. 3/16"-12	37.0	14.5	36	FORFS-1. 3/16"-DN 19
19	3/4"	1. 7/16"-23	40.0	14.5	41	FORFS-1. 7/16"-DN 19
25	1"	1. 7/16"-12	39.5	20.0	41	FORFS-1. 7/16"-DN 25
31	1 1/4"	1. 11/16"-12	38.0	25.5	50	FORFS-1. 11/16"-DN 31
38	1 1/2"	2"-12	39.0	31.5	60	FORFS-2"-DN 38

ORFS Inserts

BOOK INDEX

SECTION INDEX

ORFS swept 90° female
with female nut



2

Hose DN	Bore in.	Thread G	Approx. Dimensions				Part code
			A	B	C	SW	
06	1/4"	9/16"-18	30.0	28.0	4.0	19	FORFS-9/16"-90°-DN 06
06	1/4"	11/16"-16	30.0	30.0	4.0	22	FORFS-11/16"-90°-DN 06
08	5/16"	11/16"-16				22	FORFS-11/16"-90°-DN 08
10	3/8"	11/16"-16	35.0	31.0	7.0	22	FORFS-11/16"-90°-DN 10
10	3/8"	13/16"-16	42.0	36.0	7.0	24	FORFS-13/16"-90°-DN 10
12	1/2"	13/16"-16	44.0	36.5	9.5	24	FORFS-13/16"-90°-DN 12
12	1/2"	1"-14	46.0	48.5	9.5	30	FORFS-1"-90°-DN 12
16	5/8"	1"-14	56.0	49.0	12.5	30	FORFS-1"-90°-DN 16
19	3/4"	1"-14	60.0	59.0	14.5	30	FORFS-1"-90°-DN 19
12	1/2"	1. 3/16"-12				36	FORFS-1. 3/16"-90°-DN 12
16	5/8"	1. 3/16"-12				36	FORFS-1. 3/16"-90°-DN 16
19	3/4"	1. 3/16"-12	74.0	52.5	14.5	36	FORFS-1. 3/16"-90°-DN 19
19	3/4"	1. 7/16"-23				41	FORFS-1. 7/16"-90°-DN 19
25	1"	1. 7/16"-12	83.5	66.0	20.0	41	FORFS-1. 7/16"-90°-DN 25
31	1 1/4"	1. 11/16"-12	86.5	79.0	25.0	50	FORFS-1. 11/16"-90°-DN 31
38	1 1/2"	2"-12	104.0	97.0	31.0	60	FORFS-2"-90°-DN 38

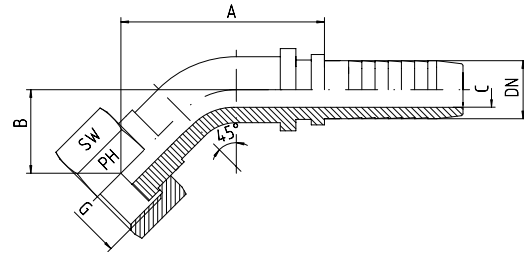
ORFS Inserts

BOOK INDEX

SECTION INDEX

2

ORFS swept 45° female
with female nut



Hose DN	Bore in.	Thread G	Approx. Dimensions				Part code
			A	B	C	SW	
06	1/4"	9/16"-18	38.0	15.5	4.0	19	FORFS-9/16"-45°-DN 06
06	1/4"	11/16"-16				22	FORFS-11/16"-45°-DN 06
08	5/16"	11/16"-16				22	FORFS-11/16"-45°-DN 08
10	3/8"	11/16"-16	40.5	15.0	7.0	22	FORFS-11/16"-45°-DN 10
10	3/8"	13/16"-16	49.0	19.5	7.0	24	FORFS-13/16"-45°-DN 10
12	1/2"	13/16"-16	52.5	17.5	9.5	24	FORFS-13/16"-45°-DN 12
12	1/2"	1"-14				30	FORFS-1"-45°-DN 12
16	5/8"	1"-14	59.0	24.0	12.5	30	FORFS-1"-45°-DN 16
19	3/4"	1"-14	66.0	29.0	14.5	30	FORFS-1"-45°-DN 19
12	1/2"	1. 3/16"-12				36	FORFS-1. 3/16"-45°-DN 12
16	5/8"	1. 3/16"-12				36	FORFS-1. 3/16"-45°-DN 16
19	3/4"	1. 3/16"-12	76.5	25.5	14.5	36	FORFS-1. 3/16"-45°-DN 19
19	3/4"	1. 7/16"-23				41	FORFS-1. 7/16"-45°-DN 19
25	1"	1. 7/16"-12	91.0	32.0	20.0	41	FORFS-1. 7/16"-45°-DN 25
31	1 1/4"	1. 11/16"-12	95.5	44.0	25.0	50	FORFS-1. 11/16"-45°-DN 31
38	1 1/2"	2"-12	108.0	42.0	31.0	60	FORFS-2"-45°-DN 38

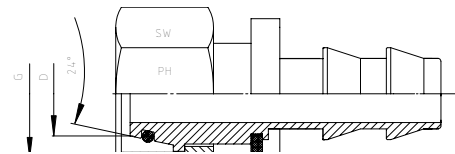
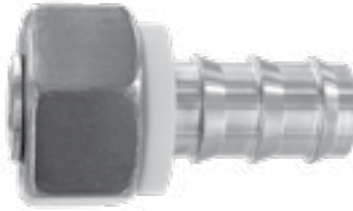
Push-Lock-DKOL-Nipples for Push-on-Hose

To interface with compression fittings with a 24° cone to DIN 2353 / DIN EN ISO 8434-1

Light Series = DKOL - Straight

O-ring = NBR

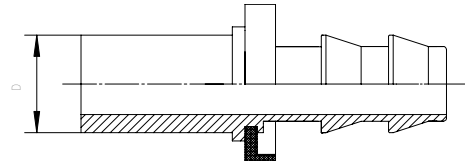
On Request: Viton



Hose DN	Bore in.	Thread G	Tube O.D. D	Approx. Dimensions			Part code
				A	C	SW	
06	1/4"	M 12 x 1.5	6	21	3.7	14	PL-DKOL-06-DN 06
06	1/4"	M 14 x 1.5	8	17	4.5	17	PL-DKOL-08-DN 06
10	3/8"	M 16 x 1.5	10	17	7.0	19	PL-DKOL-10-DN 10
10	3/8"	M 18 x 1.5	12	17	7.5	22	PL-DKOL-12-DN 10
12	1/2"	M 22 x 1.5	15	18	10.0	27	PL-DKOL-15-DN 12
16	5/8"	M 26 x 1.5	18	19	13.5	32	PL-DKOL-18-DN 16
19	3/4"	M 30 x 2	22	21	15.5	36	PL-DKOL-22-DN 19
25	1"	M 36 x 2	28	23	21.0	41	PL-DKOL-28-DN 25

Push-Lock-BEL-Nipples for Push-on-Hose

Light Series = BEL - Straight



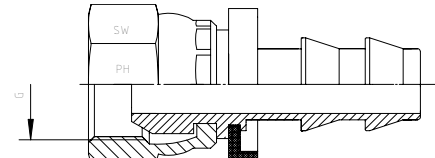
Hose DN	Bore in.	Tube O.D. D	Approx. Dimensions			Part code
			A	C	L	
06	1/4"	6			20.0	PL-BEL-06-DN 06
06	1/4"	8			22.0	PL-BEL-08-DN 06
10	3/8"	10			23.0	PL-BEL-10-DN 10
10	3/8"	12			25.0	PL-BEL-12-DN 10
12	1/2"	15			28.0	PL-BEL-15-DN 12
16	5/8"	18			27.0	PL-BEL-18-DN 16
19	3/4"	22			27.0	PL-BEL-22-DN 19
25	1"	28			30.0	PL-BEL-28-DN 25

Push-Lock-DKR-Nipples for Push-on-Hose

With BSP Union Nut

For Connectors with 60°-Cone

DKR - Straight

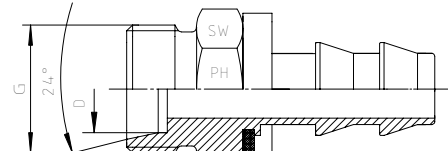


Hose DN	Bore in.	Thread G	Approx. Dimensions			Part code
			A	C	SW	
06	1/4"	1/4"-19			17	PL-DKR-1/4"-DN 06
10	3/8"	3/8"-19			19	PL-DKR-3/8"-DN 10
12	1/2"	1/2"-14			27	PL-DKR-1/2"-DN 12
19	3/4"	3/4"-14			32	PL-DKR-3/4"-DN 19
25	1"	1"-11			41	PL-DKR-1"-DN 25

Push-Lock-CEL-Nipples for Push-on-Hose

Compression connection
DIN 2353 / DIN EN ISO 8434-1

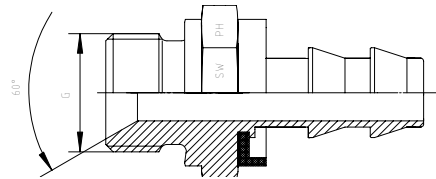
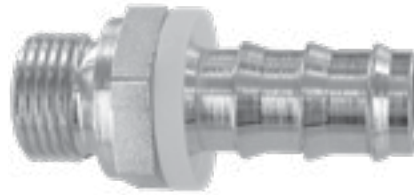
Light Series = CEL



Hose DN	Bore in.	Thread G	Tube O.D. D	Approx. Dimensions			Part code
				A	C	SW	
06	1/4"	M 12 x 1.5	6			14	PL-CEL-06-DN 06
06	1/4"	M 14 x 1.5	8			14	PL-CEL-08-DN 06
10	3/8"	M 16 x 1.5	10			17	PL-CEL-10-DN 10
10	3/8"	M 18 x 1.5	12			19	PL-CEL-12-DN 10
12	1/2"	M 22 x 1.5	15			22	PL-CEL-15-DN 12
16	5/8"	M 26 x 1.5	18			27	PL-CEL-18-DN 16
19	3/4"	M 30 x 2	22			30	PL-CEL-22-DN 19
25	1"	M 36 x 2	28			36	PL-CEL-28-DN 25

Push-Lock-Male-Nipples for Push-on-Hose

PL-AGR with 60°-Cone & Sealing Shoulder Form B
Thread: BSP - Parallel



Hose DN	Bore in.	Thread G	Approx. Dimensions				Part code
			A	C	L	SW	
06	1/4"	1/8"-28		5.0		14	PL-AGR-1/8"-DN 06
06	1/4"	1/4"-19		5.0		19	PL-AGR-1/4"-DN 06
10	3/8"	1/4"-19	21	7.5	44.0	19	PL-AGR-1/4"-DN 10
10	3/8"	3/8"-19	23	7.5	45.0	22	PL-AGR-3/8"-DN 10
12	1/2"	1/2"-14	27	10.0	53.0	27	PL-AGR-1/2"-DN 12
16	5/8"	1/2"-14	25	13.0	62.0	27	PL-AGR-1/2"-DN 16
19	3/4"	3/4"-14	28	16.0	65.0	32	PL-AGR-3/4"-DN 19
25	1"	1"-11	35	21.0	71.5	41	PL-AGR-1"-DN 25