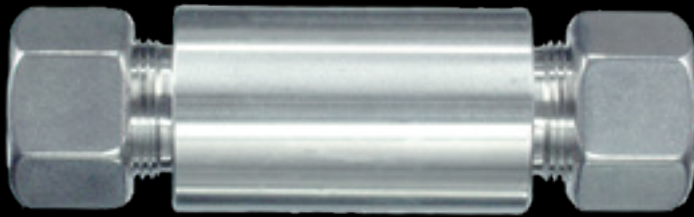




Pegasus
hydraulics

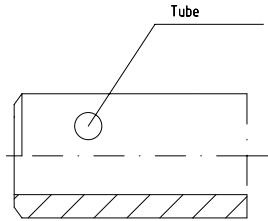
Weld fittings



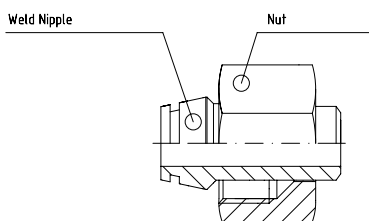
10



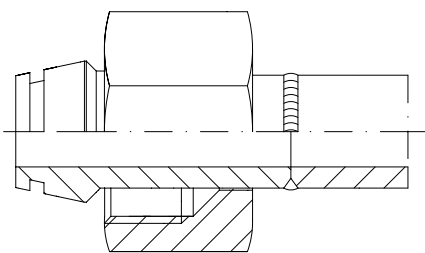
	Product Groups	Page
	Assembly instructions	10.02
	Bulkhead coupling	10.03
	Weld stub	10.04
	Weld stub elbow	10.05
	Weld coupling	10.06
	Weld nipple	10.07
	Reducing weld nipple	10.08
	Swept 90° weld nipple	10.09



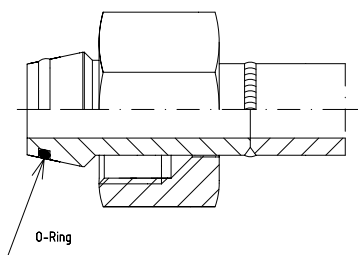
1. Cut the tube square and chamfer the end in preparation for welding. DIN 2559 is the standard for such preparation.



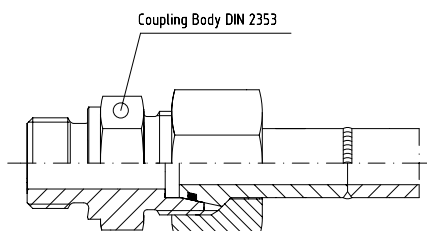
2. Remove the weld nipple O-ring and slip the nut over it, as shown.



3. Weld the tube and weld nipple together in accordance with normal welding practice.



4. Replace the weld nipple O-ring and ensure it is not twisted. Lubricate the weld nipple, the cone and the threads, don't grease.



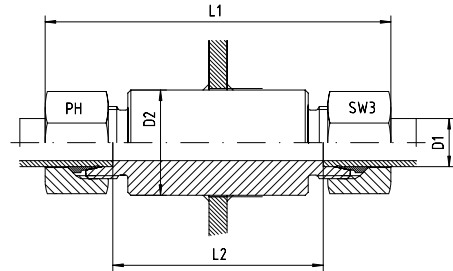
5. Offer the assembly to the fitting body and hand-tighten the nut. Then, with a spanner, turn the nut about 1/4 to 1/3 of a turn to tighten it. The weld nipple / tube assembly must be free of radial tension.

Bulkhead coupling

BOOK INDEX

SECTION INDEX

to ISO 8434-1 / DIN 2353



Series	Pressure PN	Tube O.D.		Approx. Dimensions			Part code
		D1	D2	L1	L2	SW3	
L	500	6	18	85	56	14	ESV-L-06
L	500	8	20	85	56	17	ESV-L-08
L	500	10	22	87	58	19	ESV-L-10
L	400	12	25	87	58	22	ESV-L-12
L	400	15	28	100	70	27	ESV-L-15
L	400	18	32	101	69	32	ESV-L-18
L	250	22	36	105	73	36	ESV-L-22
L	250	28	40	106	73	41	ESV-L-28
L	250	35	50	114	71	50	ESV-L-35
L	250	42	60	115	70	60	ESV-L-42

Series	Pressure	Tube O.D.		Approx. Dimensions			Part code
S	800	6	20	89	60	17	ESV-S-06
S	800	8	22	89	60	19	ESV-S-08
S	800	10	25	91	59	22	ESV-S-10
S	630	12	28	91	59	24	ESV-S-12
S	630	14	30	107	72	27	ESV-S-14
S	630	16	35	107	71	30	ESV-S-16
S	420	20	38	114	71	36	ESV-S-20
S	420	25	45	120	72	46	ESV-S-25
S	420	30	50	126	73	50	ESV-S-30
S	420	38	60	133	72	60	ESV-S-38

Fittings can be supplied with nuts with silver-plated threads to help to prevent galling, or can be supplied body only - no nut or cutting ring.

If you require silver-plated nuts, use suffix -SC. If you require body only, use suffix -OMD.

Eg. ESV-L-12-SC, or ESV-L-12-OMD.

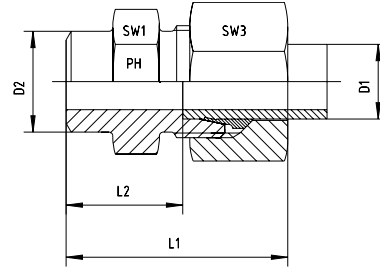
10

Weld stub

BOOK INDEX

SECTION INDEX

to ISO 8434-1 / DIN 2353



Series	Pressure PN	Tube O.D.		Approx. Dimensions				Part code
		D1	D2	L1	L2	SW1	SW3	
L	500	6	10	29	14.0	12	14	ASV-L-06
L	500	8	12	31	16.0	14	17	ASV-L-08
L	500	10	14	33	18.0	17	19	ASV-L-10
L	400	12	16	33	18.0	19	27	ASV-L-12
L	400	15	19	37	22.0	22	27	ASV-L-15
L	400	18	22	40	23.5	27	32	ASV-L-18
L	250	22	27	45	28.5	32	36	ASV-L-22
L	250	28	32	47	30.5	41	41	ASV-L-28
L	250	35	40	54	32.5	46	50	ASV-L-35
L	250	42	46	58	35.0	55	60	ASV-L-42

10

Series	Pressure PN	Tube O.D.		Approx. Dimensions				Part code
		D1	D2	L1	L2	SW1	SW3	
S	800	6	11	34	19.0	14	17	ASV-S-06
S	800	8	13	36	21.0	17	19	ASV-S-08
S	800	10	15	39	22.5	19	22	ASV-S-10
S	630	12	17	41	24.5	22	24	ASV-S-12
S	630	14	19	45	27.0	24	27	ASV-S-14
S	630	16	21	45	26.5	27	30	ASV-S-16
S	420	20	26	51	29.5	32	36	ASV-S-20
S	420	25	31	56	32.0	41	46	ASV-S-25
S	420	30	36	62	35.5	46	50	ASV-S-30
S	420	38	44	69	38.0	55	60	ASV-S-38

Fittings can be supplied with nuts with silver-plated threads to help to prevent galling, or can be supplied body only - no nut or cutting ring.

If you require silver-plated nuts, use suffix -SC. If you require body only, use suffix -OMD.

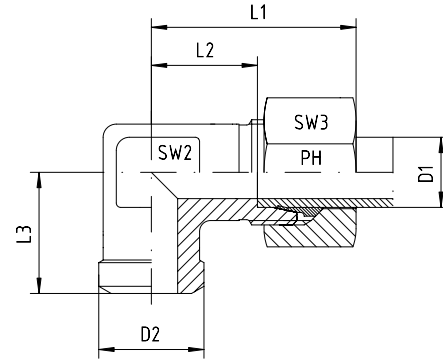
Eg. ASV-L-12-SC, or ASV-L-12-OMD.

Weld stub elbow

BOOK INDEX

SECTION INDEX

to ISO 8434-1 / DIN 2353



Series	Pressure PN	Tube O.D.		Approx. Dimensions					Part code
		D1	D2	L1	L2	L3	SW2	SW3	
L	500	6	10	27	12.0	19	12	14	WAS-L-06
L	500	8	12	29	14.0	23	12	17	WAS-L-08
L	500	10	14	30	15.0	24	14	19	WAS-L-10
L	400	12	16	32	17.0	25	17	22	WAS-L-12
L	400	15	19	36	21.0	30	19	27	WAS-L-15
L	400	18	22	40	23.5	33	24	32	WAS-L-18
L	250	22	27	44	27.5	37	27	36	WAS-L-22
L	250	28	32	47	30.5	42	36	41	WAS-L-28
L	250	35	40	56	34.5	49	41	50	WAS-L-35
L	250	42	46	63	40.0	57	50	60	WAS-L-42

10

Series	Pressure PN	Tube O.D.		Approx. Dimensions					Part code
		D1	D2	L1	L2	L3	SW2	SW3	
S	800	6	11	31	16.0	23	12	17	WAS-S-06
S	800	8	13	32	17.0	24	14	19	WAS-S-08
S	800	10	15	34	17.5	25	17	22	WAS-S-10
S	630	12	17	38	21.5	29	17	24	WAS-S-12
S	630	14	19	40	22.0	30	19	27	WAS-S-14
S	630	16	21	43	24.5	33	24	30	WAS-S-16
S	420	20	26	48	26.5	37	27	36	WAS-S-20
S	420	25	31	54	30.0	42	36	46	WAS-S-25
S	420	30	36	62	35.5	49	41	50	WAS-S-30
S	420	38	44	72	41.0	57	50	60	WAS-S-38

Fittings can be supplied with nuts with silver-plated threads to help to prevent galling, or can be supplied body only - no nut or cutting ring.

If you require silver-plated nuts, use suffix -SC. If you require body only, use suffix -OMD.

Eg. WAS-L-12-SC, or WAS-L-12-OMD.

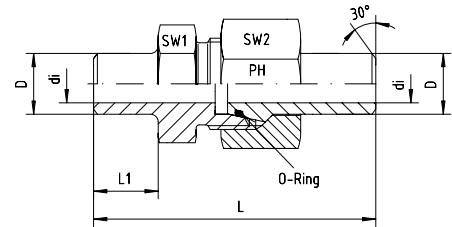
Weld coupling

BOOK INDEX

SECTION INDEX

to ISO 8434-1 / DIN 2353

Supplied with NBR O-ring,
Viton on request



Series	Pressure PN	Tube O. D.	Approx. Dimensions						O-ring	Part code
			L	L1	D	di	SW1	SW3		
S	528	6 x 1.5	52.5	10.0	6	3	14	17	4.0 x 1.5	ASV-K-6x1.5
S	414	8 x 1.5	52.5	10.0	8	5	17	19	6.0 x 1.5	ASV-K-8x1.5
S	528	8 x 2	52.5	10.0	8	4	17	19	6.0 x 1.5	ASV-K-8x2
S	249	10 x 1	58.0	10.0	10	8	19	22	8.0 x 1.5	ASV-K-10x1
S	358	10 x 1.5	58.0	10.0	10	7	19	22	8.0 x 1.5	ASV-K-10x1.5
S	460	10 x 2	58.0	10.0	10	6	19	22	8.0 x 1.5	ASV-K-10x2
S	305	12 x 1.5	63.0	15.0	12	9	22	24	10.0 x 1.5	ASV-K-12x1.5
S	393	12 x 2	63.0	15.0	12	8	22	24	10.0 x 1.5	ASV-K-12x2
S	476	12 x 2.5	63.0	15.0	12	7	22	24	10.0 x 1.5	ASV-K-12x2.5
S	343	14 x 2	73.0	15.0	14	10	24	27	10.0 x 2.0	ASV-K-14x2
S	487	14 x 3	73.0	15.0	14	8	24	27	10.0 x 2.0	ASV-K-14x3
S	305	16 x 2	73.5	16.5	16	12	27	30	13.0 x 2.0	ASV-K-16x2
S	372	16 x 2.5	73.5	16.5	16	11	27	30	13.0 x 2.0	ASV-K-16x2.5
S	400	16 x 3	73.5	16.5	16	10	27	30	13.0 x 2.0	ASV-K-16x3
S	249	20 x 2	83.5	19.0	20	16	32	36	16.0 x 2.0	ASV-K-20x2
S	305	20 x 2.5	83.5	19.0	20	15	32	36	16.3 x 2.4	ASV-K-20x2.5
S	358	20 x 3	83.5	19.0	20	14	32	36	16.3 x 2.4	ASV-K-20x3
S	400	20 x 4	83.5	19.0	20	12	32	36	16.3 x 2.4	ASV-K-20x4
S	294	25 x 3	92.5	19.5	25	19	41	46	21.3 x 2.4	ASV-K-25x3
S	379	25 x 4	92.5	19.5	25	17	41	46	21.3 x 2.4	ASV-K-25x4
S	400	25 x 5	92.5	19.5	25	15	41	46	21.3 x 2.4	ASV-K-25x5
S	249	30 x 3	101.5	23.0	30	24	46	50	25.3 x 2.4	ASV-K-30x3
S	323	30 x 4	101.5	23.0	30	22	46	50	25.3 x 2.4	ASV-K-30x4
S	393	30 x 5	101.5	23.0	30	20	46	50	25.3 x 2.4	ASV-K-30x5
S	400	30 x 6	101.5	23.0	30	18	46	50	25.3 x 2.4	ASV-K-30x6
S	261	38 x 4	108.0	22.0	38	30	55	60	34.0 x 2.5	ASV-K-38x4
S	315	38 x 5	108.0	22.0	38	28	55	60	34.0 x 2.5	ASV-K-38x5
S	315	38 x 6	108.0	22.0	38	26	55	60	34.0 x 2.5	ASV-K-38x6
S	315	38 x 7	108.0	22.0	38	24	55	60	34.0 x 2.5	ASV-K-38x7
S	250	50 x 5	118.0	23.0	50	40	70	80	46.0 x 3.0	ASV-K-50x5
S	310	50 x 6	118.0	23.0	50	38	70	80	46.0 x 3.0	ASV-K-50x6
S	350	50 x 7	118.0	23.0	50	36	70	80	46.0 x 3.0	ASV-K-50x7

Series	Pressure PN	Tube O. D.	Approx. Dimensions						O-ring	Part code
			L	L1	D	di	SW1	SW3		
L	323	15 x 2	54.5	15.0	15	11	22	27	12.0 x 2.0	ASV-K-15x2
L	315	18 x 2	57.5	16.0	18	14	27	32	15.0 x 2.0	ASV-K-18x2
L	280	22 x 2.5	74.0	19.0	22	17	32	36	19.0 x 2.0	ASV-K-22x2.5
L	265	28 x 3	78.0	19.0	28	22	41	41	25.0 x 2.0	ASV-K-28x3
L	231	35 x 3	87.5	22.0	35	29	46	50	32.0 x 2.5	ASV-K-35x3
L	182	42 x 3	87.0	22.0	42	36	55	60	38.0 x 2.5	ASV-K-42x3

10

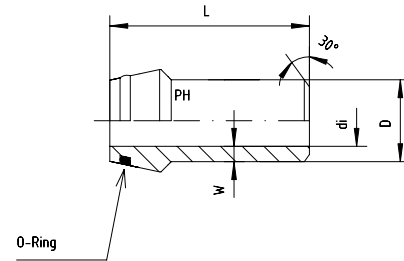
Weld nipple

BOOK INDEX

SECTION INDEX

for 24° compression fittings to
W DIN 3861

Supplied with NBR O-ring,
Viton on request



Series	Pressure PN	D x W	Approx. Dimensions		O-ring	Part code
			di	L		
L + S	528	6 x 1.5	3	31.0	4.0 x 1.5	SKV-6x1.5
L + S	414	8 x 1.5	5	31.0	6.0 x 1.5	SKV-8x1.5
L + S	528	8 x 2	4	31.0	6.0 x 1.5	SKV-8x2
L + S	249	10 x 1	8	32.5	8.0 x 1.5	SKV-10x1
L + S	358	10 x 1.5	7	32.5	8.0 x 1.5	SKV-10x1.5
L + S	460	10 x 2	6	32.5	8.0 x 1.5	SKV-10x2
L + S	305	12 x 1.5	9	32.5	10.0 x 1.5	SKV-12x1.5
L + S	393	12 x 2	8	32.5	10.0 x 1.5	SKV-12x2
L + S	476	12 x 2.5	7	32.5	10.0 x 1.5	SKV-12x2.5
L + S	476	12 x 3	6	32.5	10.0 x 1.5	SKV-12x3
S	343	14 x 2	10	40.0	10.0 x 2.0	SKV-14x2
S	415	14 x 2.5	9	40.0	10.0 x 2.0	SKV-14x2.5
S	487	14 x 3	8	40.0	10.0 x 2.0	SKV-14x3
L	270	15 x 1.5	12	36.0	12.0 x 2.0	SKV-15x1.5
L	323	15 x 2	11	36.0	12.0 x 2.0	SKV-15x2
L	393	15 x 2.5	10	36.0	12.0 x 2.0	SKV-15x2.5
S	305	16 x 2	12	38.5	13.0 x 2.0	SKV-16x2
S	372	16 x 2.5	11	38.5	13.0 x 2.0	SKV-16x2.5
S	435	16 x 3	10	38.5	13.0 x 2.0	SKV-16x3
L	225	18 x 1.5	15	37.0	16.0 x 1.5	SKV-18x1.5
L	300	18 x 2	14	37.0	15.0 x 2.0	SKV-18x2
L	335	18 x 2.5	13	37.0	15.0 x 2.0	SKV-18x2.5
S	249	20 x 2	16	44.5	16.0 x 2.0	SKV-20x2
S	305	20 x 2.5	15	44.5	16.3 x 2.4	SKV-20x2.5
S	358	20 x 3	14	44.5	16.3 x 2.4	SKV-20x3
S	460	20 x 4	12	44.5	16.3 x 2.4	SKV-20x4
L	245	22 x 2	18	38.5	19.0 x 2.0	SKV-22x2
L	280	22 x 2.5	17	38.5	19.0 x 2.0	SKV-22x2.5
L	328	22 x 3	16	38.5	19.0 x 2.0	SKV-22x3
S	294	25 x 3	19	49.5	21.3 x 2.4	SKV-25x3
S	337	25 x 3.5	18	49.5	21.3 x 2.4	SKV-25x3.5
S	379	25 x 4	17	49.5	21.3 x 2.4	SKV-25x4
S	460	25 x 5	15	49.5	21.3 x 2.4	SKV-25x5
L	193	28 x 2	24	41.5	25.0 x 2.0	SKV-28x2
L	224	28 x 2.5	23	41.5	25.0 x 2.0	SKV-28x2.5
L	265	28 x 3	22	41.5	25.0 x 2.0	SKV-28x3
S	249	30 x 3	27	52.0	25.3 x 2.4	SKV-30x3
S	323	30 x 4	22	52.0	25.3 x 2.4	SKV-30x4
S	393	30 x 5	20	52.0	25.3 x 2.4	SKV-30x5
S	460	30 x 6	18	52.0	25.3 x 2.4	SKV-30x6
L	154	35 x 2	31	47.0	32.0 x 2.5	SKV-35x2
L	193	35 x 2.5	30	47.0	32.0 x 2.5	SKV-35x2.5
L	231	35 x 3	29	47.0	32.0 x 2.5	SKV-35x3
L	249	35 x 3.5	28	47.0	32.0 x 2.5	SKV-35x3.5
S	261	38 x 4	30	56.5	34.0 x 2.5	SKV-38x4
S	319	38 x 5	28	56.5	34.0 x 2.5	SKV-38x5
S	375	38 x 6	26	56.5	34.0 x 2.5	SKV-38x6
S	429	38 x 7	24	56.5	39.0 x 1.5	SKV-38x7
L	129	42 x 2	38	47.0	39.0 x 1.5	SKV-42x2
L	150	42 x 2.5	37	47.0	38.0 x 2.5	SKV-42x2.5
L	182	42 x 3	36	47.0	38.0 x 2.5	SKV-42x3
L	238	42 x 4	34	47.0	38.0 x 2.5	SKV-42x4
S	250	50 x 5	40	61.0	46.0 x 3.0	SKV-50x5
S	310	50 x 6	38	61.0	46.0 x 3.0	SKV-50x6
S	350	50 x 7	36	61.0	46.0 x 3.0	SKV-50x7

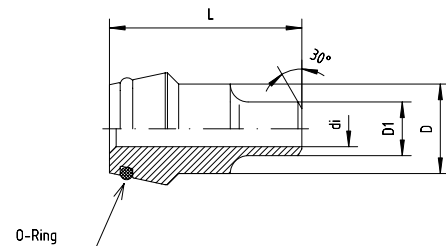
Reducing weld nipple

BOOK INDEX

SECTION INDEX

for 24° compression fittings
to W DIN 3861

Supplied with NBR O-ring,
Viton on request



Series	Pressure PN	Approx. Dimensions				O-ring	Part code
		D	D1	di	L		
S	380	8	6	4	30	6.0 x 1.5	SKV-R-8/6x1
S	528	8	6	3	30	6.0 x 1.5	SKV-R-8/6x1.5
S	414	10	8	5	32	8.0 x 1.5	SKV-R-10/8x1.5
S	528	10	8	4	32	8.0 x 1.5	SKV-R-10/8x2
S	528	10	6	3	32	8.0 x 1.5	SKV-R-10/6x1.5
S	358	12	10	7	32	10.0 x 1.5	SKV-R-12/10x1.5
S	460	12	10	6	32	10.0 x 1.5	SKV-R-12/10x2
S	414	12	8	5	32	10.0 x 1.5	SKV-R-12/8x1.5
S	380	12	6	4	32	10.0 x 1.5	SKV-R-12/6x1
S	528	12	6	3	32	10.0 x 1.5	SKV-R-12/6x1.5
S	393	16	12	8	39	13.0 x 2.0	SKV-R-16/12x2
S	460	16	10	6	39	13.0 x 2.0	SKV-R-16/10x2
S	414	16	8	5	39	13.0 x 2.0	SKV-R-16/8x1.5
S	435	20	16	10	43	16.3 x 2.4	SKV-R-20/16x3
S	372	20	16	11	43	16.3 x 2.4	SKV-R-20/16x2.5
S	305	20	16	12	43	16.3 x 2.4	SKV-R-20/16x2
S	393	20	12	8	43	16.3 x 2.4	SKV-R-20/12x2
S	358	20	10	7	43	16.3 x 2.4	SKV-R-20/10x1.5
S	414	20	8	5	43	16.3 x 2.4	SKV-R-20/8x1.5
S	358	25	20	14	50	21.3 x 2.4	SKV-R-25/20x3
S	305	25	20	15	50	21.3 x 2.4	SKV-R-25/20x2.5
S	249	25	20	16	50	21.3 x 2.4	SKV-R-25/20x2
S	435	25	16	10	50	21.3 x 2.4	SKV-R-25/16x3
S	372	25	16	11	50	21.3 x 2.4	SKV-R-25/16x2.5
S	305	25	16	12	50	21.3 x 2.4	SKV-R-25/16x2
S	393	25	12	8	50	21.3 x 2.4	SKV-R-25/12x2
S	460	25	10	6	50	21.3 x 2.4	SKV-R-25/10x2
S	294	30	25	19	52	25.3 x 2.4	SKV-R-30/25x3
S	358	30	20	14	52	25.3 x 2.4	SKV-R-30/20x3
S	435	30	16	10	52	25.3 x 2.4	SKV-R-30/16x3
S	393	30	12	8	52	25.3 x 2.4	SKV-R-30/12x2
S	323	38	30	22	58	34.0 x 2.5	SKV-R-38/30x4
S	249	38	30	24	58	34.0 x 2.5	SKV-R-38/30x3
S	379	38	25	17	58	34.0 x 2.5	SKV-R-38/25x4
S	294	38	25	19	58	34.0 x 2.5	SKV-R-38/25x3
S	358	38	20	14	58	34.0 x 2.5	SKV-R-38/20x3
S	305	38	20	15	58	34.0 x 2.5	SKV-R-38/20x2.5
S	435	38	16	10	58	34.0 x 2.5	SKV-R-38/16x3
S	305	38	16	12	58	34.0 x 2.5	SKV-R-38/16x2
S	393	38	12	8	58	34.0 x 2.5	SKV-R-38/12x2

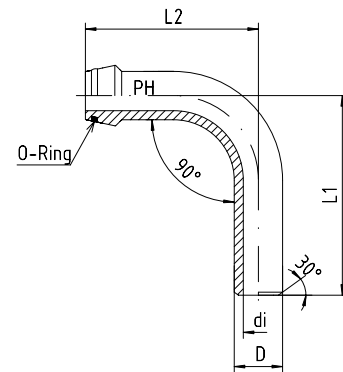
Swept 90° weld nipple

BOOK INDEX

SECTION INDEX

for 24° compression fittings
to W DIN 3861

Supplied with NBR O-ring,
Viton on request



Series	Pressure PN	Tube	Approx. Dimensions				O-ring	Part code
			D	di	L1	L2		
S	460	10 x 2	10	6	49	51	8.0 x 1.5	SKV-RB-10x2
S	393	12 x 2	12	8	50	51	10.0 x 1.5	SKV-RB-12x2
S	476	12 x 2.5	12	7	50	51	10.0 x 1.5	SKV-RB-12x2.5
S	305	16 x 2	16	12	72	67	13.0 x 2.0	SKV-RB-16x2
S	372	16 x 2.5	16	11	72	67	13.0 x 2.0	SKV-RB-16x2.5
S	435	16 x 3	16	10	72	67	13.0 x 2.0	SKV-RB-16x3
S	249	20 x 2	20	16	89	86	16.3 x 2.4	SKV-RB-20x2
S	305	20 x 2.5	20	15	89	86	16.3 x 2.4	SKV-RB-20x2.5
S	358	20 x 3	20	14	89	86	16.3 x 2.4	SKV-RB-20x3
L	328	22 x 3	22	16	79	85	19.0 x 2.0	SKV-RB-22x3
S	294	25 x 3	25	19	93	89	21.3 x 2.4	SKV-RB-25x3
S	379	25 x 4	25	17	93	89	21.3 x 2.4	SKV-RB-25x4
S	460	25 x 5	25	15	93	89	21.3 x 2.4	SKV-RB-25x5
S	323	30 x 4	30	22	112	105	25.3 x 2.4	SKV-RB-30x4
S	393	30 x 5	30	20	112	105	25.3 x 2.4	SKV-RB-30x5
S	460	30 x 6	30	18	112	105	25.3 x 2.4	SKV-RB-30x6
S	261	38 x 4	38	30	145	137	34.0 x 2.5	SKV-RB-38x4
S	319	38 x 5	38	28	145	137	34.0 x 2.5	SKV-RB-38x5
S	375	38 x 6	38	26	145	137	34.0 x 2.5	SKV-RB-38x6
S	429	38 x 7	38	24	145	137	34.0 x 2.5	SKV-RB-38x7